

North 1/4 Corner of Section 29,  
17th, R1W, SLB&M, U.S. Survey  
Found Monument

58°50'30" E 22' cont

58°57'54" E (Weber County Survey)  
105.00' dist

104.71' meas

58°53'30" E  
315.00'

Northeast Corner of Section 29,  
17th, R1W, SLB&M, U.S. Survey  
Found Monument

2652.13' meas

2652.19' (Weber County Survey)  
N 18°50'19" W  
2042.22' meas

2042.22' meas

Set nail and cast in concrete

Set nail and cast in concrete

Set nail and cast in concrete

Set nail and cast in concrete

Set nail and cast in concrete

Set nail and cast in concrete

Set nail and cast in concrete

Set nail and cast in concrete

Set nail and cast in concrete

Set nail and cast in concrete

Set nail and cast in concrete

Set nail and cast in concrete

Set nail and cast in concrete

Set nail and cast in concrete

Set nail and cast in concrete

Set nail and cast in concrete

Set nail and cast in concrete

Set nail and cast in concrete

Set nail and cast in concrete

Set nail and cast in concrete

Set nail and cast in concrete

Set nail and cast in concrete

Set nail and cast in concrete

Set nail and cast in concrete

Set nail and cast in concrete

Set nail and cast in concrete

Set nail and cast in concrete

Set nail and cast in concrete

Set nail and cast in concrete

Set nail and cast in concrete

Set nail and cast in concrete

Set nail and cast in concrete

Set nail and cast in concrete

Set nail and cast in concrete

Set nail and cast in concrete

Set nail and cast in concrete

Set nail and cast in concrete

Set nail and cast in concrete

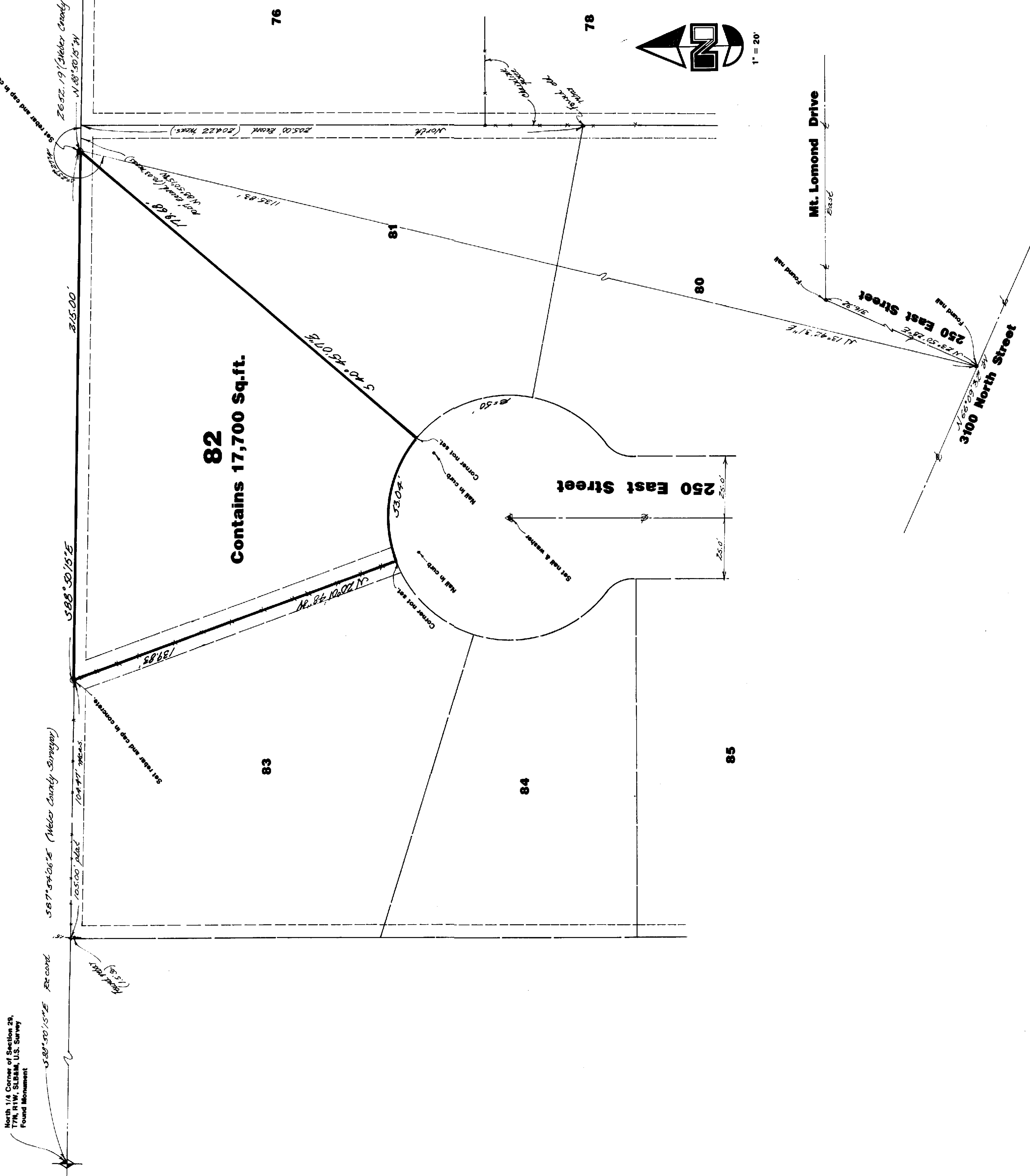
Set nail and cast in concrete

Set nail and cast in concrete

Set nail and cast in concrete

Set nail and cast in concrete

Set nail and cast in concrete



76

78

**82**  
Contains 17,700 Sq.ft.

83

84

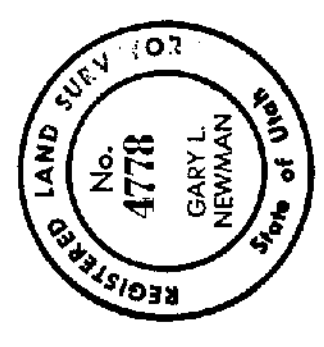
85

**NARRATIVE**  
This Survey was requested by Judy and Frank Berrett in order to establish Property Corners. Nails were found at the intersection of Mt. Lomond Drive and 250 East Street and 3100 North Street and 250 East Street. A line bearing North 23°50'28" East between these nails was used as a basis of bearing. Property Corners were set as depicted on this Drawing.

**DESCRIPTION**  
All of Lot 82, Mt. Lomond Estates No. 2, North Ogden City, Weber County, Utah according to the official plat thereof.

**CERTIFICATION**  
I, Gary L. Newman, do hereby certify that I am a Registered Land Surveyor, and that I hold Certificate No. 4778, as prescribed by the Laws of the State of Utah, and I have made a survey of the above described property. I further certify that the above plat correctly shows the true dimensions of the property surveyed.

Date 10-17-91  
Gary L. Newman  
Gary L. Newman



**GREAT BASIN ENGINEERING, INC.**  
CONSULTING ENGINEERS & SURVEYORS  
OGDEN & SALT LAKE CITY, UTAH

**Property Survey for**  
**Frank Berrett**  
3291 North 250 East  
North Ogden, Weber County, Utah  
All of Lot 82, Mount Lomond Estates No. 2  
A part of the NE 1/4 of Section 29, 17th, R1W, SLB&M, U.S. Survey

CAO  
7 October 1991  
1" = 20'  
PS-94-55

RECEIVED  
OCT 22 1991  
Weber County Surveyor