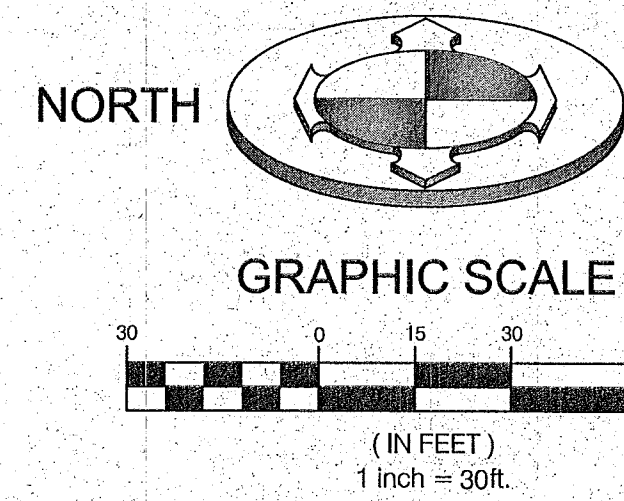


ALTANSPTS LAND TITLE SURVEY

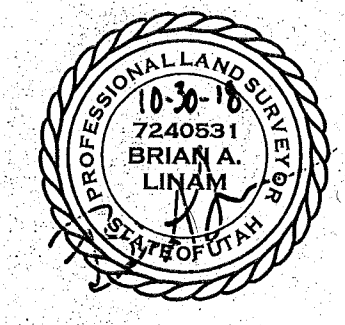
LOCATED IN THE NORTHEAST QUARTER OF SECTION 29,
TOWNSHIP 6 NORTH, RANGE 1 WEST,
SALT LAKE BASE AND MERIDIAN
OGDEN CITY, WEBER COUNTY, UTAH
ALSO A PORTION OF LOTS 2, 3 AND 4 OF BLOCK 45, PLAT A,
OGDEN CITY SURVEY



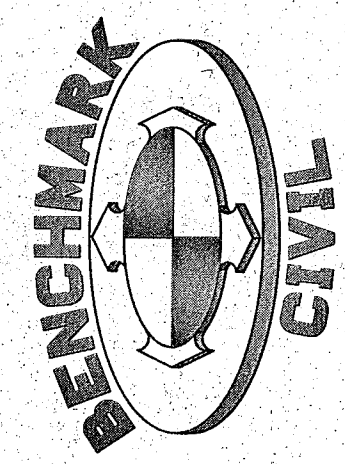
LEGEND AND ABBREVIATIONS

STREET MON. (FOUND)	○	SANITARY SEWER MANHOLE & PIPE	SS	POB = POINT OF BEGINNING
STREET MON. (NOT LOCATED)	○	STORM DRAIN MANHOLE & PIPE	SD	SDMH = STORM DRAIN MANHOLE
SET PROPERTY CORNER (PLAT NOTED)	○	MANHOLE & COLLINARY PIPE LINE	W	SSMH = SANITARY SEWER MANHOLE
FOUND PL. MARKER (PLAT NOTED)	○	WATER VALVE & WATER METER	WV	SDIB = STORM DRAIN INLET BOX
ADJACENT PL. or LOT LINES	---	FIRE HYDRANT	✕	
PARCEL LINES	---	POWER POLE & OVERHEAD POWER	OHP	
EASEMENT LINE	---	MANHOLE & UNDERGROUND POWER	UGP	
CURB & GUTTER	---	GAS LINE & MANHOLE	GAS	
EDGE OF EXISTING ASPHALT	---	MANHOLE & TELEPHONE LINE	T	
FENCE, CHAIN	---	TELECOMM PEDESTAL	TP	
DECIDUOUS TREE	○	SIGN	+	
CONIFEROUS TREE	○			

No.	DATE	DESCRIPTION

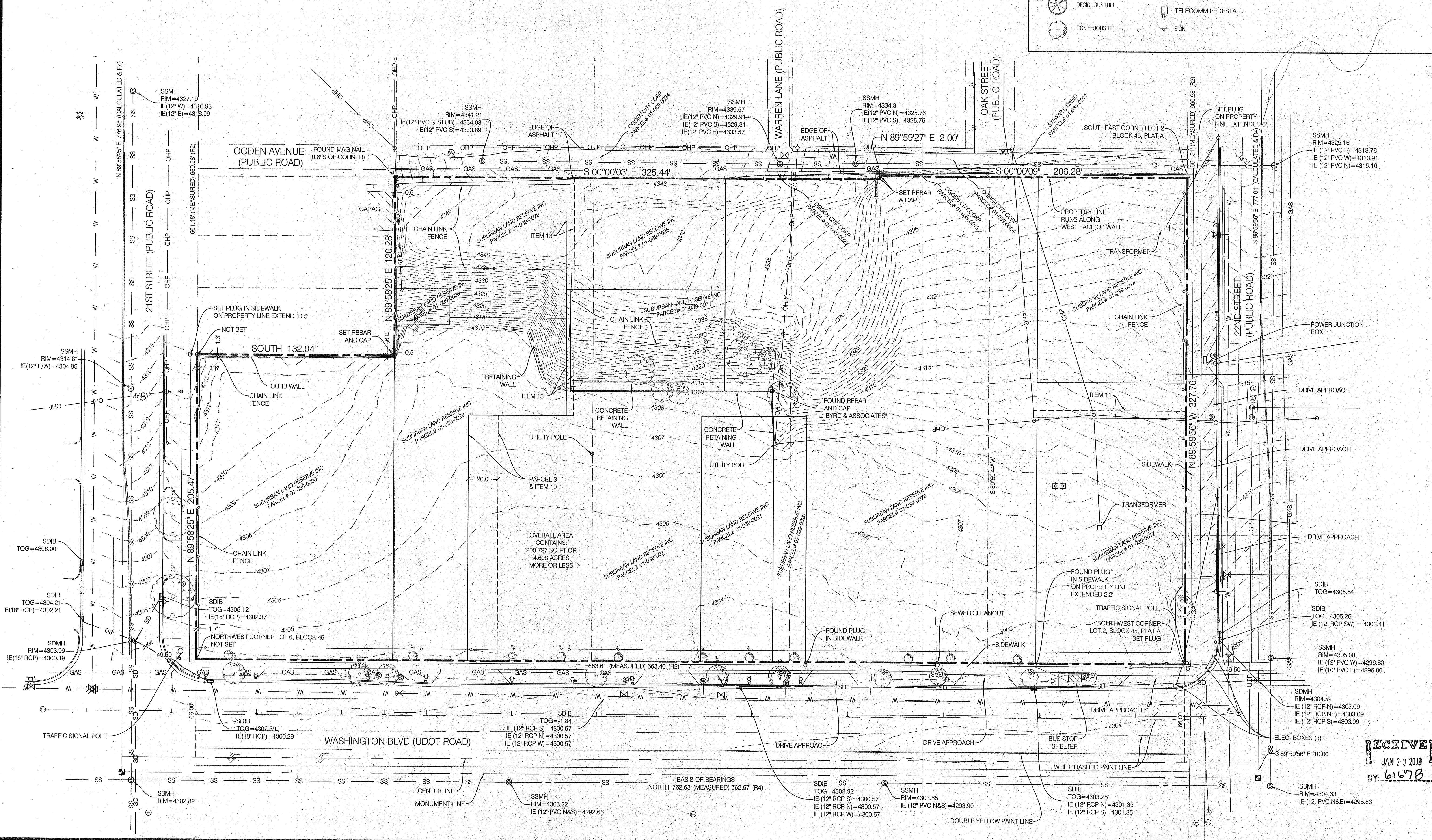


BENCHMARK ENGINEERING & LAND SURVEYING
938 SOUTH STATE STREET, SUITE #100
SANDY, UTAH 84070 (801) 542-7192
www.benchmarkcivil.com



INTERNATIONAL DEVELOPMENT GROUP, INC
2110, 2132, 2137, 2144 & 2154 WASHINGTON BLVD.
OGDEN, UTAH

PROJECT NO. 1809188
ALTA/NSPS LAND TITLE SURVEY
SVA.01
2 OF 2



RECEIVED
JAN 23 2019
BY: 6167B