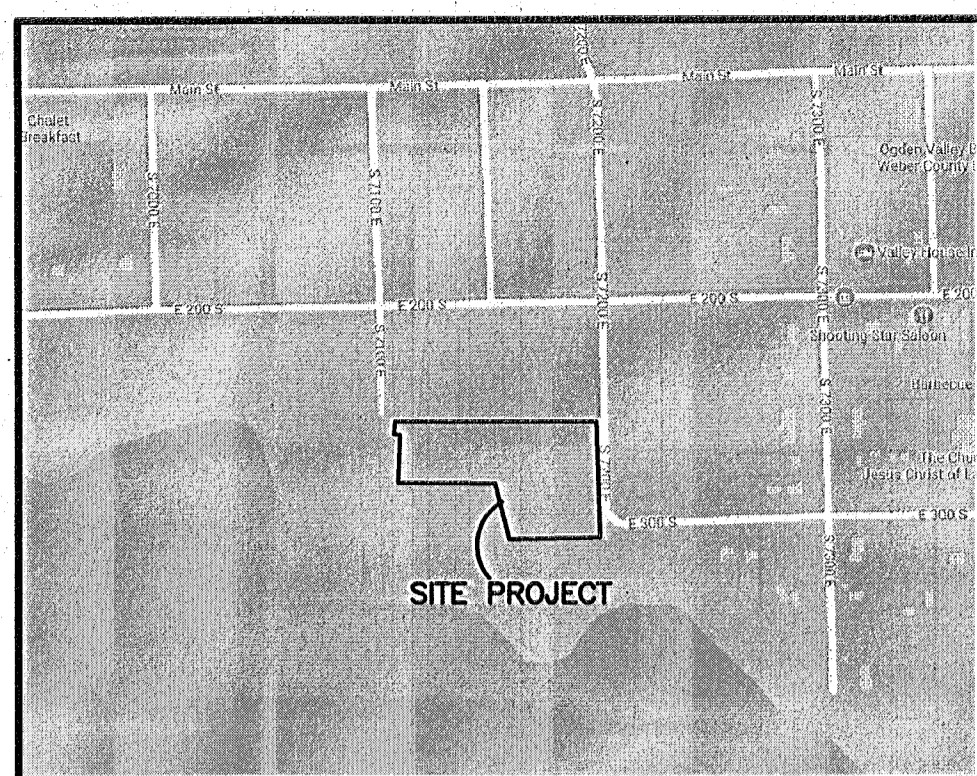


# RECORD OF SURVEY

## PART OF LOTS 5 AND 6, BLOCK 1, PLAT 'C', HUNTSVILLE CITY SURVEY WEBER COUNTY, UTAH JANUARY 2019



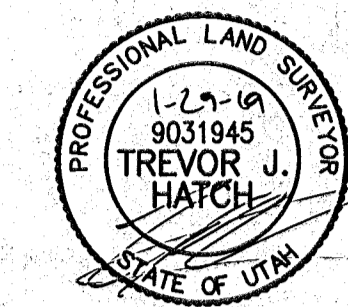
VICINITY MAP  
NOT TO SCALE

### SURVEYOR'S CERTIFICATION

I, **TREVOR HATCH**, DO HEREBY CERTIFY THAT I AM A PROFESSIONAL LAND SURVEYOR IN THE STATE OF UTAH IN ACCORDANCE WITH TITLE 58, CHAPTER 22, PROFESSIONAL ENGINEERS AND PROFESSIONAL LAND SURVEYORS ACT; AND THAT I HAVE COMPLETED A SURVEY OF THE PROPERTY DESCRIBED ON THIS PLAT IN ACCORDANCE WITH SECTION 17-23-17 AND HAVE VERIFIED ALL MEASUREMENTS, AND HAVE PLACED MONUMENTS AS REPRESENTED ON THIS PLAT. I FURTHER CERTIFY THAT THIS PLAT IS A CORRECT REPRESENTATION OF THE LAND SURVEYED AND HAS BEEN PREPARED IN CONFORMITY WITH THE MINIMUM STANDARDS AND REQUIREMENTS OF THE LAW.

SIGNED THIS 29<sup>th</sup> DAY OF January, 2019.

9031945  
UTAH LICENSE NUMBER



### AS SURVEYED DESCRIPTION

A PART OF LOTS 5 AND 6, BLOCK 1, PLAT "C", HUNTSVILLE CITY SURVEY, WEBER COUNTY, UTAH, AND SITUATE IN THE NORTHWEST QUARTER OF SECTION 18, TOWNSHIP 6 NORTH, RANGE 2 EAST, SALT LAKE BASE AND MERIDIAN, U.S. SURVEY, FURTHER DESCRIBED AS FOLLOWS:

BEGINNING AT THE NORTHEAST CORNER OF SAID LOT 6, SAID CORNER IS 337.92 FEET S01°19'26"E ALONG THE MONUMENT LINE AND 49.50 FEET S88°39'00"W FROM A BRASS CAP MONUMENT IN THE INTERSECTION OF 200 SOUTH STREET AND 7200 EAST STREET, AND RUNNING THENCE S01°19'26"E 339.58 FEET ALONG THE EAST LINE AND PROJECTION THEREOF OF SAID LOT 6; THENCE S88°39'00"W 217.10 FEET; THENCE N01°19'26"W 99.00 FEET; THENCE S88°39'00"W 35.34 FEET; THENCE N01°19'26"W 60.00 FEET; THENCE S88°39'00"W 266.39 FEET TO THE PROJECTION OF A FENCE; THENCE ALONG SAID FENCE AND PROJECTION THEREOF THE FOLLOWING THREE (3) COURSES: (1) N02°23'07"W 147.39 FEET; (2) S88°39'00"W 14.21 FEET; (3) N01°21'00"W 33.21 FEET TO A PROJECTION OF THE NORTH LINE OF SAID LOT 6; THENCE N88°39'00"E 535.79 FEET ALONG SAID NORTH LOT LINE AND PROJECTION THEREOF TO THE POINT OF BEGINNING.

CONTAINING 131,094 SQUARE FEET OR 3.010 ACRES MORE OR LESS.

### BASIS OF BEARINGS

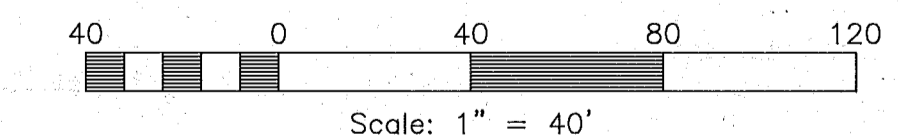
THE BASIS OF BEARINGS FOR THIS PLAT IS THE MONUMENT LINE BETWEEN A FOUND BRASS CAP MONUMENT AT THE INTERSECTION OF 200 SOUTH STREET AND 7200 EAST STREET AND A FOUND BRASS CAP MONUMENT AT THE INTERSECTION OF 200 SOUTH STREET AND 7100 EAST STREET, SHOWN HEREON AS: S88°40'00"W

### NARRATIVE

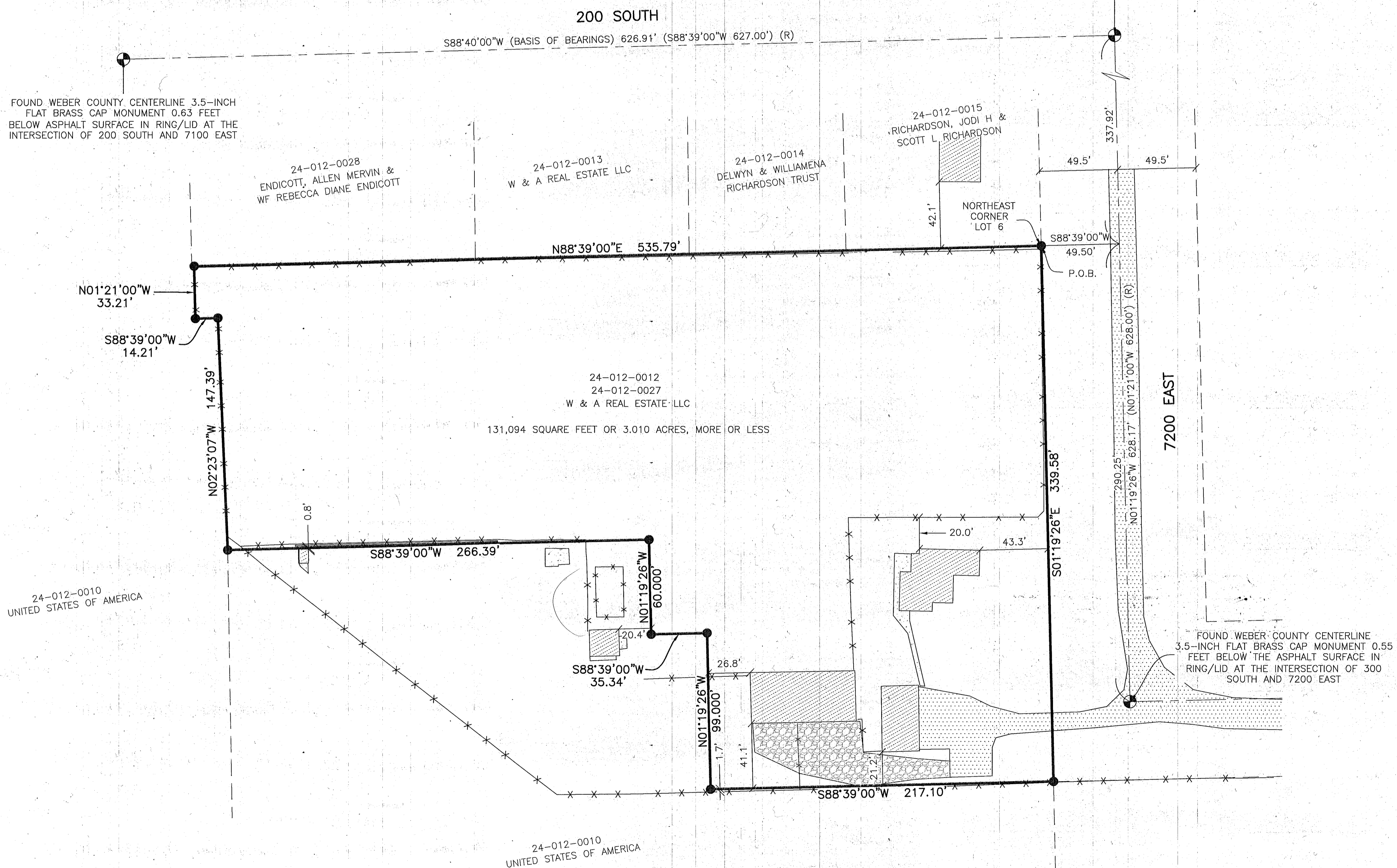
THE PURPOSE OF THIS PLAT IS TO MARK THE BOUNDARY ON THE GROUND. BOUNDARY LINES WERE DETERMINED BY CURRENT DEEDS OF RECORD, THE OFFICIAL MAP OF HUNTSVILLE TOWNSHIP, WEBER COUNTY, UTAH, ADOPTED BY WEBER COUNTY BOARD OF COMMISSIONERS ON NOVEMBER 2ND, 1925 (BOOK 08, PAGE 057B), AND BY UTILIZING MEASUREMENTS OF FOUND CENTERLINE MONUMENTS. THE WESTERLY LIMITS OF THIS BOUNDARY, IN PARTICULAR, WERE DETERMINED BY A FENCE OF LONG RELIANCE WHICH CORRESPONDED WELL WITH A WARRANTY DEED IN FAVOR OF THE UNITED STATES OF AMERICA AT BOOK 122, PAGE 237, IN THE OFFICE OF THE WEBER COUNTY RECORDER.

### LEGEND

- 
- 
- 
- 
- 
- 
- 
- 
- 
- 



RECEIVED  
FEB 08 2019  
BY: 673 6173



**Reeve & Associates, Inc.**  
5160 SOUTH 1000 WEST, RENOVALE, UTAH, 84403  
TEL: (801) 871-3100 FAX: (801) 871-2866 WWW.REEVE-ASSOCIATES.COM  
LAND SURVEYORS • CIVIL ENGINEERS • LAND ENGINEERS • LAND DEVELOPERS • SURVEYING ARCHITECTS

REVISIONS	DESCRIPTION
DATE	

**RECORD OF SURVEY**  
PART OF LOTS 5 AND 6, BLOCK 1, PLAT "C", HUNTSVILLE CITY SURVEY  
WEBER COUNTY, UTAH

**BILL WHITE**

**Project Info.**  
Surveyor: **T. HATCH**  
Designer: **A. INARNIT**  
Begin Date: **1/24/2019**  
Name: **285 S. 7200 E., HUNTSVILLE**  
Scale: **1"=40'**  
Checked: **6889-01**  
Number: **6889-01**

Sheet **1** of **1** Sheets