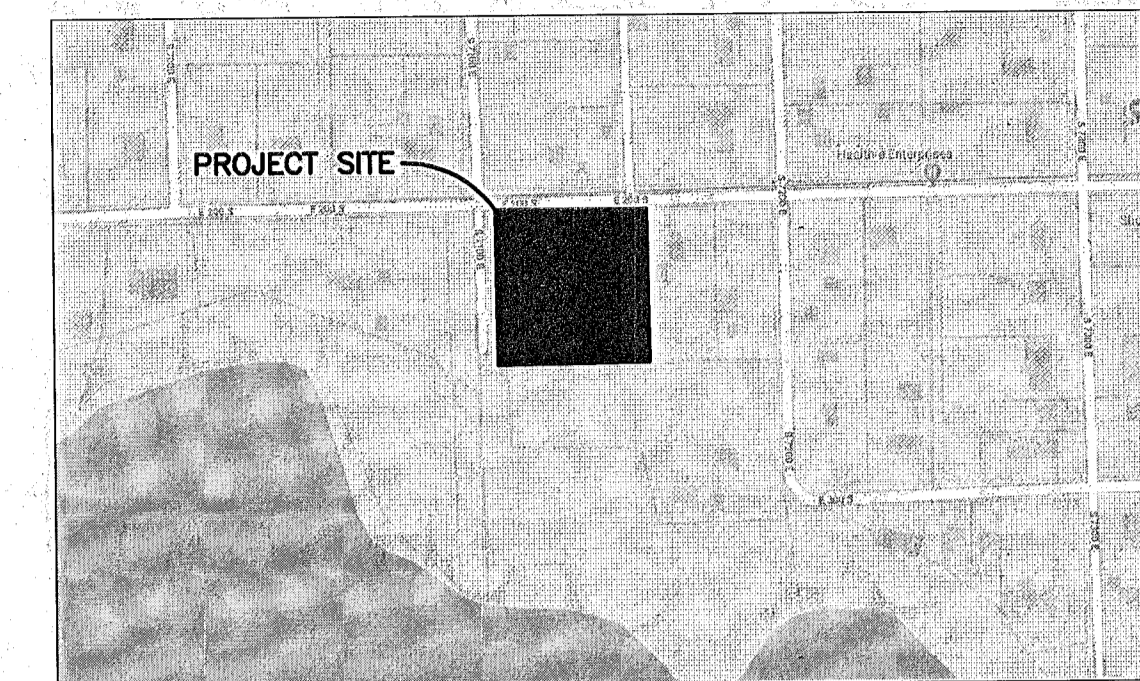
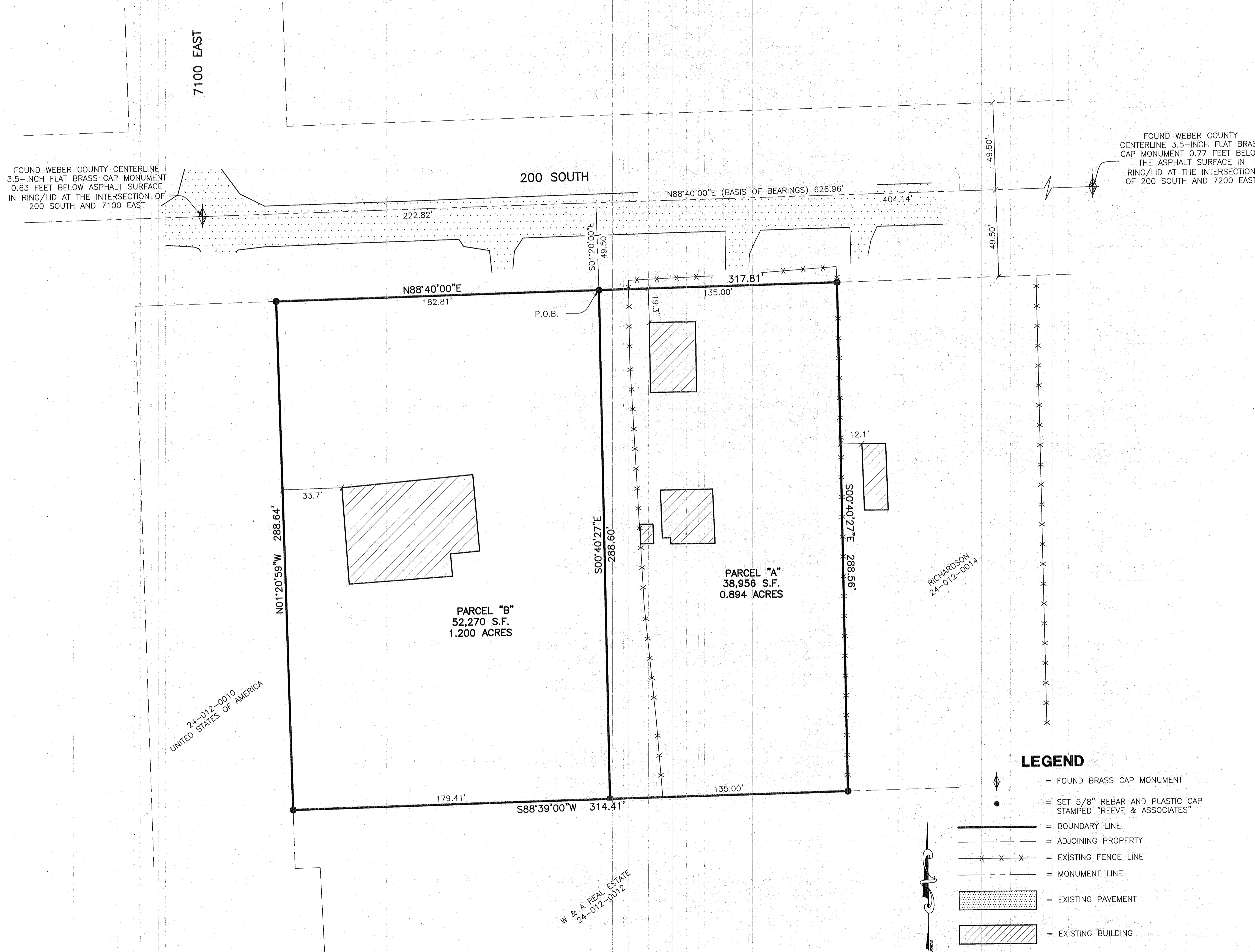


# RECORD OF SURVEY

PART OF LOTS 5 AND 7, BLOCK 1, PLAT "C", HUNTSVILLE SURVEY  
WEBER COUNTY, UTAH  
NOVEMBER 2018

Reeve & Associates, Inc. - Solutions You Can Build On



VICINITY MAP  
NOT TO SCALE

### SURVEYOR'S CERTIFICATION

I, **TREVOR HATCH**, DO HEREBY CERTIFY THAT I AM A PROFESSIONAL LAND SURVEYOR IN THE STATE OF UTAH IN ACCORDANCE WITH TITLE 58, CHAPTER 22, PROFESSIONAL ENGINEERS AND LAND SURVEYORS ACT; AND THAT I HAVE COMPLETED A SURVEY OF THE PROPERTY DESCRIBED ON THIS PLAT IN ACCORDANCE WITH SECTION 17-23-17 AND HAVE VERIFIED ALL MEASUREMENTS, AND HAVE PLACED MONUMENTS AS REPRESENTED ON THIS PLAT. I FURTHER CERTIFY THAT THIS PLAT IS A CORRECT REPRESENTATION OF THE LAND SURVEYED AND HAS BEEN PREPARED IN CONFORMITY WITH THE MINIMUM STANDARDS AND REQUIREMENTS OF THE LAW.

SIGNED THIS 5<sup>th</sup> DAY OF February, 2019.

9031945  
UTAH LICENSE NUMBER



### BASIS OF BEARINGS

THE BASIS OF BEARINGS FOR THIS PLAT IS THE MONUMENT LINE BETWEEN A FOUND BRASS CAP MONUMENT AT THE INTERSECTION OF 200 SOUTH STREET AND 7200 EAST STREET AND A FOUND BRASS CAP MONUMENT AT THE INTERSECTION OF 200 SOUTH STREET AND 7100 EAST STREET, SHOWN HEREON AS: S88°40'00"W

### NARRATIVE

THE PURPOSE OF THIS SURVEY IS TO MOVE THE PROPERTY LINE BETWEEN THE TWO SUBJECT PARCELS AS TO PROVIDE MORE FRONTAGE FOR THE EASTERLY PARCEL. THE BOUNDARY WAS DETERMINED BY DEED ON THE SOUTH, BY STREET MONUMENTS ON THE NORTH, AND BY ACQUIESCENCE ON THE EAST AND WEST LINES.

### PARCEL 'A' DESCRIPTION

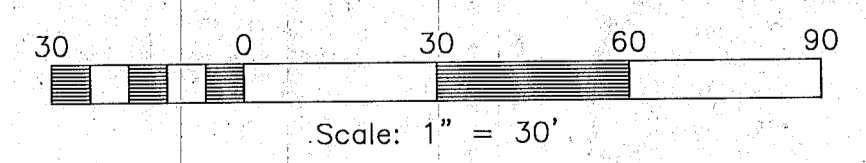
A PART OF LOT 7, BLOCK 1, PLAT "C", HUNTSVILLE SURVEY, MORE PARTICULARLY DESCRIBED AS FOLLOWS:  
BEGINNING AT A POINT IN THE NORTHERLY LOT LINE OF SAID LOT 7, SAID POINT IS 222.82 FEET N88°40'00"E ALONG THE MONUMENT LINE AND 49.50 FEET S01°20'00"E FROM A BRASS CAP MONUMENT AT THE INTERSECTION OF 200 SOUTH STREET AND 7100 SOUTH STREET, AND RUNNING THENCE N88°40'00"E 135.00 FEET ALONG SAID NORTHERLY LOT LINE; THENCE S00°40'27"E 288.56 FEET; THENCE S88°39'00"W 135.00 FEET; THENCE N00°40'27"W 288.60 FEET TO THE POINT OF BEGINNING.  
CONTAINING 38,956 SQUARE FEET OR 0.894 ACRES, MORE OR LESS

### PARCEL 'B' DESCRIPTION

A PART OF LOTS 5 AND 7, BLOCK 1, PLAT "C", HUNTSVILLE SURVEY, MORE PARTICULARLY DESCRIBED AS FOLLOWS:  
BEGINNING AT A POINT IN THE NORTHERLY LOT LINE OF SAID LOT 5, SAID POINT IS 222.82 FEET N88°40'00"E ALONG THE MONUMENT LINE AND 49.50 FEET S01°20'00"E FROM A BRASS CAP MONUMENT AT THE INTERSECTION OF 200 SOUTH STREET AND 7100 SOUTH STREET, AND RUNNING THENCE S00°40'27"E 288.60 FEET ALONG SAID NORTHERLY LOT LINE; THENCE S88°39'00"W 179.41 FEET; THENCE N01°20'59"W 288.64 FEET; THENCE N88°40'00"E 182.81 FEET TO THE POINT OF BEGINNING.  
CONTAINING 52,270 SQUARE FEET OR 1.200 ACRES, MORE OR LESS.

### LEGEND

- = FOUND BRASS CAP MONUMENT
- = SET 5/8" REBAR AND PLASTIC CAP STAMPED "REEVE & ASSOCIATES"
- = BOUNDARY LINE
- = ADJOINING PROPERTY
- = EXISTING FENCE LINE
- = MONUMENT LINE
- = EXISTING PAVEMENT
- = EXISTING BUILDING



**Reeve & Associates, Inc.**  
910 SOUTH 1000 WEST, KERRVILLE, UTAH 84003  
TEL: (801) 621-3100 FAX: (801) 621-3666 WWW.REEVE-ASSOCIATES.COM  
LAND PLANNERS • CIVIL ENGINEERS • LAND SURVEYORS  
TRAFFIC ENGINEERS • STRUCTURAL ENGINEERS • LANDSCAPE ARCHITECTS

REVISIONS	DESCRIPTION
DATE	

**RECORD OF SURVEY**  
PART OF LOTS 5 AND 7, BLOCK 1, PLAT "C", HUNTSVILLE SURVEY  
WEBER COUNTY, UTAH

**BILL WHITE**

**Project Info.**

Surveyor:	T. HATCH
Designer:	A. INABNIT
Begin Date:	2-1-19
Name:	BILL WHITE
Scale:	1"=30'
Checked:	
Number:	6889-03

**RECEIVED**  
APR 0 3 2019  
BY: 621b