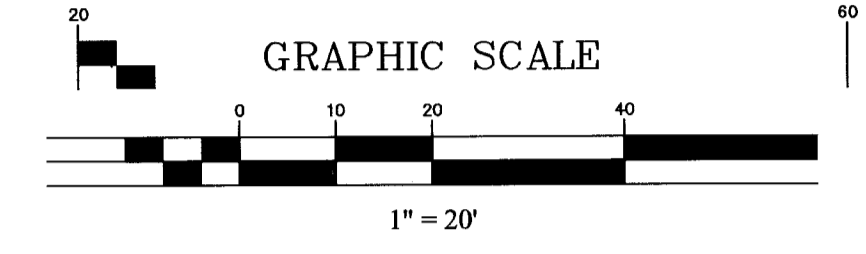
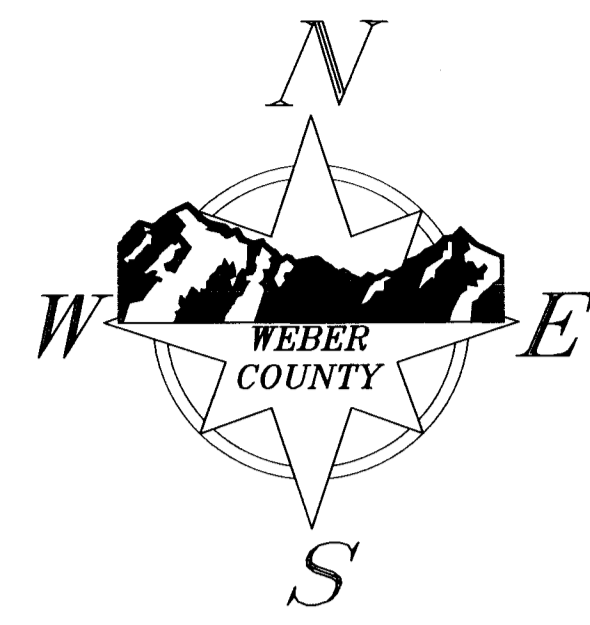
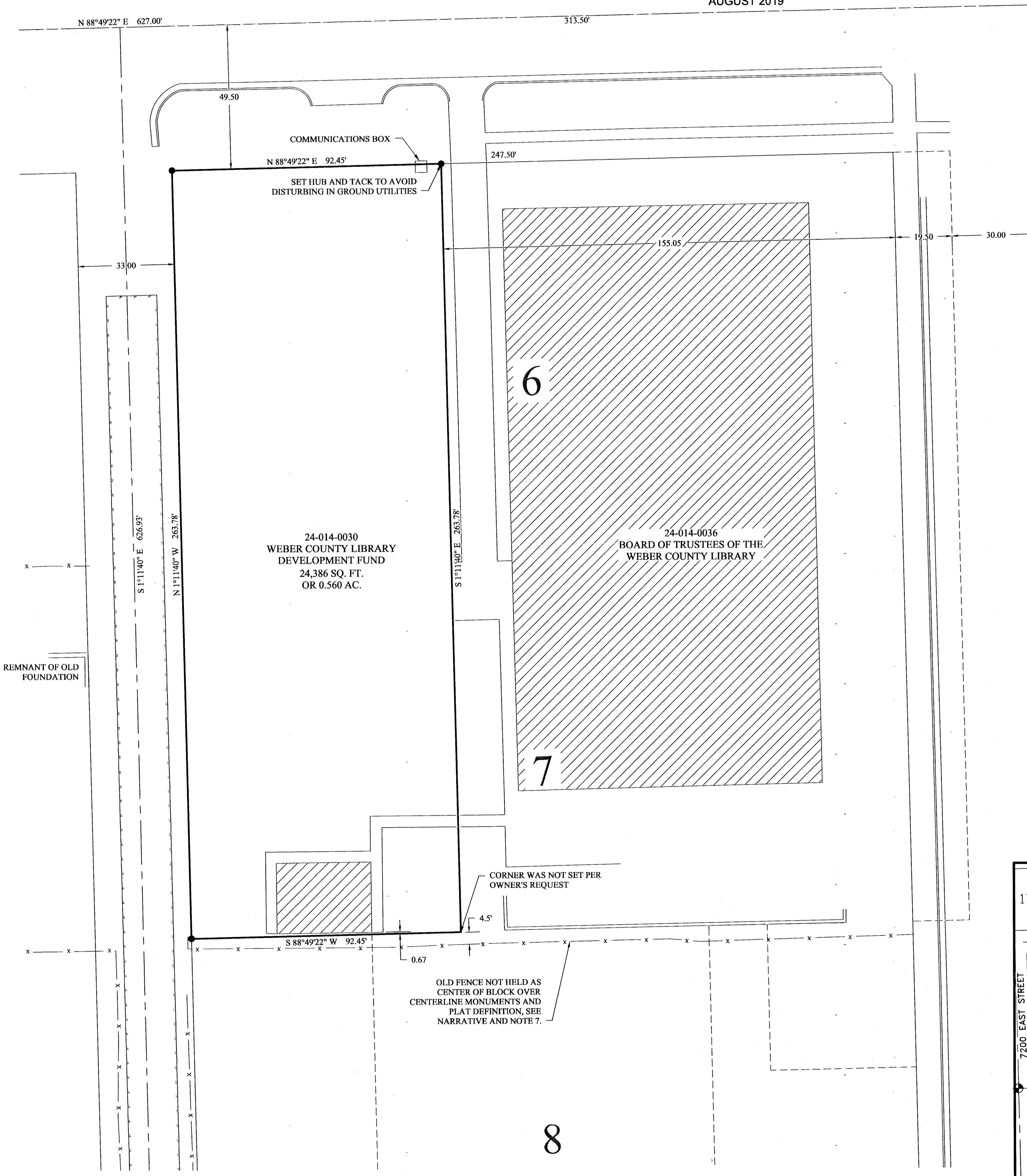


SURVEY OF WEBER COUNTY PARCEL

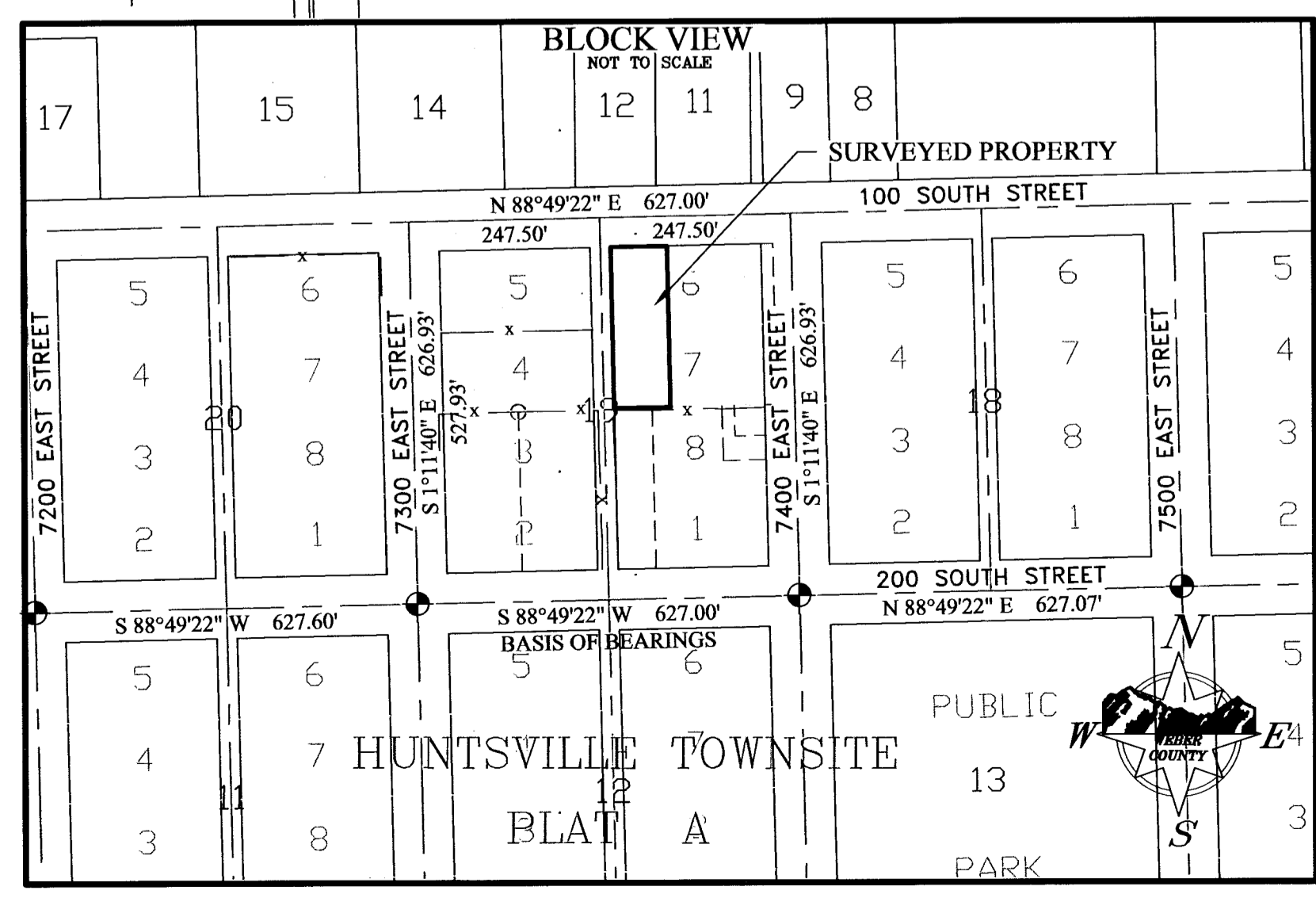
24-014-0030

LOCATED IN THE NORTHWEST QUARTER OF SECTION 18, TOWNSHIP 6 NORTH, RANGE 2 EAST, SALT LAKE BASE & MERIDIAN.
AUGUST 2019



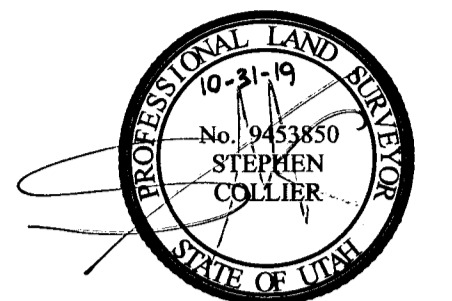
LEGEND

- WEBER COUNTY STREET MONUMENT
- SECTION CORNER MONUMENT
- SET PROPERTY CORNER (SEE NOTE 5)
- FOUND REBAR AND CAP STAMPED GARDNER ENGINEERING BOUNDARY LINE
- ADJACENT BOUNDARY LINE
- SECTION LINE
- MONUMENT TIE LINE
- RIGHT OF WAY CENTER LINE
- FENCE
- EDGE OF ASPHALT
- EDGE OF CONCRETE
- HUNTSVILLE TOWNSITE BLOCK LINE
- # OR # HUNTSVILLE TOWNSITE LOT NUMBER
- # HUNTSVILLE TOWNSITE BLOCK NUMBER
- BUILDING

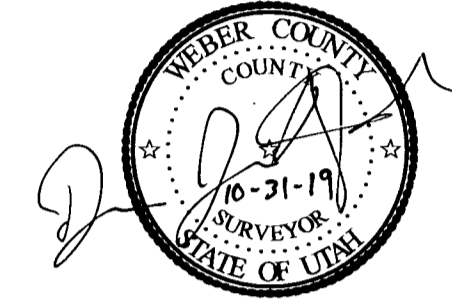


SURVEYOR'S CERTIFICATE:

I, STEPHEN COLLIER, A PROFESSIONAL LAND SURVEYOR HOLDING LICENSE NUMBER 9453850, IN ACCORDANCE WITH THE LAWS OF THE STATE OF UTAH, AND IN ACCORDANCE WITH TITLE 58, CHAPTER 22, PROFESSIONAL ENGINEERS AND PROFESSIONAL LAND SURVEYOR'S LICENSING ACT, HAVE COMPLETED A SURVEY OF THE TRACT OF LAND DESCRIBED HEREON IN ACCORDANCE WITH SECTION 17-23-17 AND HAVE VERIFIED ALL MEASUREMENTS AND PLACED MONUMENTS ON THE GROUND AS REPRESENTED HEREON.



I, DEVRON ANDERSEN, PLS, DO HEREBY CERTIFY THAT I AM A DEPUTY SURVEYOR OF THE WEBER COUNTY RECORDER/SURVEYOR'S OFFICE, STATE OF UTAH, AS PRESCRIBED UNDER THE LAWS OF THE STATE OF UTAH AND THAT A SURVEY OF COUNTY PROPERTY HAS BEEN MADE UNDER THE DIRECTION OF THE WEBER COUNTY RECORDER/SURVEYOR AS SHOWN AND DESCRIBED HEREON.



DESCRIPTION:

ALL OF LOTS 6 AND 7, BLOCK 19, PLAT A, HUNTSVILLE SURVEY, WEBER COUNTY, UTAH, LESS AND EXCEPT THAT CONVEYED TO THE BOARD OF TRUSTEES OF THE WEBER COUNTY LIBRARY IN DOCUMENT RECORDED BOOK 1752 PAGE 937, ENTRY NUMBER 1339575.

SURVEYOR'S NARRATIVE:

THIS SURVEY WAS COMMISSIONED BY WEBER COUNTY FOR THE PURPOSE OF RETRACING PARCEL 24-014-0030 IN PREPARATION TO CONSTRUCT A FENCE AROUND THE NORTH AND WEST SIDES OF THE PROPERTY.

THE BASIS OF BEARING FOR THIS SURVEY IS NORTH 88°49'22" EAST, AS MEASURED ALONG THE MONUMENT LINE OF 200 SOUTH FROM 7300 EAST STREET TO 7400 EAST STREET.

THE BOUNDARY WAS RETRACED AS DEFINED BY THE OFFICIAL MAP OF HUNTSVILLE TOWNSITE DATED NOVEMBER 2, 1925 RECORDED IN BOOK 5 AT PAGE 77. FOUND CENTERLINE MONUMENTS ALONG 200 SOUTH STREET ALONG WITH SEVERAL OTHERS THROUGHOUT THE TOWNSITE (SEE NOTE 7) HAVE BEEN USED TO VERIFY PLAT DIMENSIONS AND DETERMINE THE LOCATION OF THE LOTS AND BLOCKS SHOWN HEREON. THE VERIFIED BLOCK LINES MATCH ROAD IMPROVEMENTS, FENCES, UTILITY LINES, AND STRUCTURES ABUTTING THE BLOCK LINE VERY WELL FOR THE SUBJECT BLOCK AND ALL ADJOINING BLOCKS. WHILE LOT LINES WITHIN OTHER BLOCKS MATCH FENCE LINES, WITHIN THE SUBJECT BLOCK, BLOCK 19, THERE IS A FENCE WHICH APPEARS TO HAVE BEEN RELIED UPON FOR A LONG TIME AS THE NORTH LINE OF THE SOUTH HALF OF THE BLOCK. HOWEVER, THE NORTH HALF OF THE BLOCK APPEARS TO HAVE HELD THE CENTER OF THE BLOCK AS DEFINED BY PLAT AS ITS SOUTH BOUNDARY WHICH IS DEMONSTRATED BY A CONCRETE WALL AMONG OTHER IMPROVEMENTS WITH THE BOUNDARY BEING SHOWN ON THE DESIGN DRAWINGS AS 4.5' FROM THE FENCE. THIS SURVEY HOLDS THE ORIGINAL SUBDIVISION MONUMENTS (SEE NOTE 7) AND PLAT DEFINITION WITH MATCHING IMPROVEMENTS OVER THE LOCATION OF THE OLD FENCE FOR THE BOUNDARY OF THE SURVEYED PROPERTY.

GENERAL NOTES:

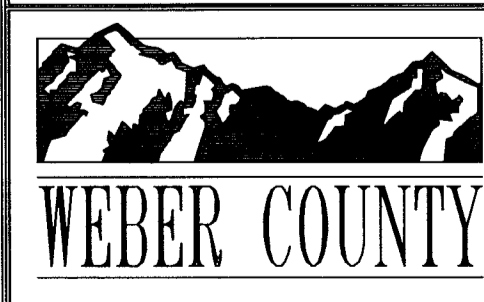
- NO EASEMENTS ARE ADDRESSED BY THIS MAP.
- THIS MAP IS NOT PROOF OF OWNERSHIP.
- COURSES AND DISTANCES SHOWN ON THIS MAP ARE MEASURED DIMENSIONS TAKEN FROM ACTUAL FIELD MEASUREMENTS, UNLESS CONTAINED WITHIN PARENTHESES, INDICATING A RECORD COURSE OR DISTANCE. RECORD INFORMATION IS TAKEN FROM MAPS, PLATS, DEEDS OF RECORD, OR OTHER SOURCES OF RECORD INFORMATION.
- NO ABSTRACT OF TITLE, OR COMMITMENT FOR TITLE INSURANCE WAS OBTAINED OR REVIEWED DURING THE PROCESS OF THIS SURVEY. THERE MAY EXIST OTHER DOCUMENTS OF RECORD THAT MAY AFFECT THE SUBJECT PROPERTY'S QUALITY OF TITLE.
- PROPERTY CORNERS NOT FOUND WERE MARKED WITH A 5/8" X 24" REBAR AND YELLOW NYLON CAP STAMPED "WEBER COUNTY", OR A NAIL AND WASHER BEARING THE SAME INSIGNIA, UNLESS OTHERWISE NOTED ON THIS THE MAP.
- BUILDINGS SHOWN HEREON HAVE BEEN ROUGHLY SKETCHED USING AERIAL IMAGERY AND ARE APPROXIMATIONS ONLY.
- SEVERAL STONE MONUMENTS PREVIOUSLY FOUND AND ACCEPTED BY THE COUNTY AS THE ORIGINAL CENTERLINE MONUMENTS FOR HUNTSVILLE TOWNSITE HAVE BEEN REPLACED WITH THE CURRENT BRASS CAP MONUMENTS AT THE LOCATION OF THE ORIGINAL STONES.

RECEIVED
OCT 31 2019
6359

SHEET NO:
1/1

SURVEY OF PARCEL 24-014-0030

LOCATED IN THE NORTHWEST QUARTER OF SECTION 18, TOWNSHIP 6 NORTH, RANGE 2 EAST, SALT LAKE BASE & MERIDIAN.



2380 Washington Blvd, Suite 370
Ogden, Utah 84401
PHONE: (801) 399-8020
FAX: (801) 399-8316

SURVEYED BY: W. THOMPSON		DRAWN BY: S. COLLIER	
CHECKED BY: S. COLLIER		FILED SURVEY NUMBER:	
REVISIONS			
No.	DATE	BY	REVISION

S:\Projects\2019\11_1_19\24-014-0030\DWG\Record of Survey_1_1_19_24-014-0030.dwg Oct 30, 2019 - 5:59pm