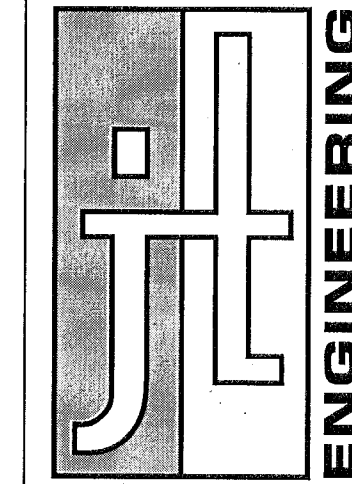


RECORD OF SURVEY

LOCATED IN THE SOUTHEAST QUARTER OF SECTION 26,
TOWNSHIP 5 NORTH, RANGE 1 WEST,
SALT LAKE BASE AND MERIDIAN,
WEBER AND DAVIS COUNTY, UTAH



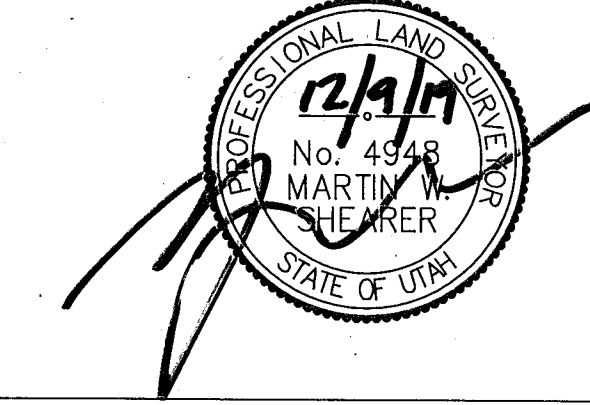
JT Engineering, PC
7866 South 2325 East
South Weber, Utah
Mobile 801.866.7702

SHEET
1 OF 1

SURVEYOR'S CERTIFICATE:

I, MARTIN W. SHEARER, DO HEREBY CERTIFY THAT I AM A LICENSED LAND SURVEYOR AND THAT I HOLD LICENSE No. 4948 AS PRESCRIBED BY THE STATE OF UTAH, AND THAT THE SURVEY AS DESCRIBED HEREON WAS PERFORMED BY ME OR UNDER MY DIRECTION, AND THAT THIS MAP CORRECTLY DEPICTS THE FINDINGS OF THAT SURVEY.

DATE OF PLAT OR MAP: DECEMBER 9, 2019.



NARRATIVE OF BOUNDARY:

THE PURPOSE OF THIS SURVEY IS TO DEFINE THE EAST-WEST 40 ACRE LINE OF THE NORTHWEST QUARTER OF THE SOUTHWEST QUARTER OF SECTION 26, TOWNSHIP 5 NORTH, RANGE 1 WEST, SALT LAKE BASE AND MERIDIAN. FIELD WORK FOR THE PREPARATION OF THIS MAP WAS OBTAINED DURING THE PERIOD OF 2015 TO 2017.

THE SOUTH LINE OF SECTION 26 WAS RE-ESTABLISHED FROM A BEST FIT LINE UTILIZING THREE SURVEY MARKERS AS FOLLOWS: (1) A 1" NAIL FLUSH WITH THE ASPHALT AT THE SOUTHWEST CORNER OF SECTION 26; (2) A 1" NAIL FLUSH WITH THE ASPHALT FOUND AT THE WITNESS CORNER FOR THE SOUTH QUARTER OF SECTION 26; (3) A LARGE NAIL AND WASHER FOUND AT THE WITNESS CORNER FOR THE SOUTHWEST QUARTER OF SECTION 26, AS SHOWN ON THE "DAVIS COUNTY SURVEYOR'S OFFICE - SECTION CORNER TIES".

THE SOUTH QUARTER OF SECTION 26 WAS RE-ESTABLISHED AT A POINT 198.67 FEET EAST, ALONG THE SECTION LINE, FROM THE WITNESS CORNER (1" NAIL FLUSH WITH ASPHALT), PER PAGE 840 OF THE "DAVIS COUNTY SURVEYOR'S OFFICE - SECTION CORNER TIES".

THE EAST LINE OF SECTION 26 WAS CALCULATED BASED ON THE RECORD BEARING (WHAT RECORD BEARING) FROM THE MONUMENT FOUND AT THE NORTHEAST CORNER OF SECTION 26. FURTHER, A REBAR AND CAP (REDCON #498) WAS FOUND ON THE CALCULATED SECTION LINE. SAID REBAR AND CAP IS UNDERSTOOD TO REPRESENT THE NORTHEAST CORNER OF PARCEL 3 AND TO BE ON THE SECTION LINE OF SECTIONS 25 AND 26 AS SHOWN ON THE SURVEY PREPARED BY REDCON ON MAY 27, 1997 AND FILED AT THE OFFICE OF THE WEBER COUNTY SURVEYOR ON JUNE 9, 1997 AS SURVEY NUMBER 1645.

THE SOUTHWEST CORNER OF SECTION 26 WAS RE-ESTABLISHED AT THE INTERSECTION OF THE SOUTH LINE OF SECTION 26 AND THE EAST LINE OF SECTION 26. THE DISTANCE OF 117.88 FEET, AS SHOWN ON PAGE 839 OF THE "DAVIS COUNTY SURVEYOR'S OFFICE - SECTION CORNER TIES", WAS NOT CONSISTENT WITH THE ABOVE AND THE MEASURED DISTANCE IS SHOWN HEREON IN SUBJECT DETAIL. THE DISTANCE OF 62.18 FEET, AS SHOWN ON SAID PAGE 839, WAS FOUND TO BE CONSISTENT WITH THE MEASUREMENT SHOWN HEREON.

THE EAST QUARTER OF SECTION 26 WAS RE-ESTABLISHED BASED ON THE ORIGINAL SURVEY PERFORMED BY AUG. D. FERRON IN 1871. A QUARTZITE STONE (NOT FOUND) WAS PLACED BY FERRON 40.00 CHAINS NORTH OF THE SOUTHWEST CORNER OF SECTION 26. FERRON NOTED EXISTING UNION PACIFIC RAILROAD TRACKS A DISTANCE OF 43.25 CHAINS NORTH OF SAID SOUTHWEST CORNER. BASED ON RECORD INFORMATION, AND FIELD MEASUREMENTS, THE EAST QUARTER WAS RE-ESTABLISHED AS FOLLOWS:

1. THE CENTER OF SAID EXISTING RAILROAD TRACKS WAS FOUND TO BE A DISTANCE OF 2796.62 FEET FROM THE RE-ESTABLISHED POSITION OF THE SOUTHWEST CORNER OF SECTION 26.
2. A FACTOR WAS CALCULATED BY DIVIDING THE MEASURED DISTANCE (2796.62 FEET) BY THE RECORD DISTANCE (43.25 CHAINS, OR 2854.50 FEET). FACTOR=0.979723244001.
3. THE RECORD LOCATION OF THE EAST QUARTER IS 3.25 CHAINS (214.50 FEET) SOUTH OF THE RAILROAD TRACKS. THIS DISTANCE WAS ADJUSTED BY THE FACTOR AND EQUALS 210.15 FEET.
4. THE POSITION OF THE EAST QUARTER WAS RE-ESTABLISHED AT A DISTANCE OF 210.15 FEET SOUTH OF THE EXISTING RAILROAD TRACKS WHICH IS ALSO 2886.47 FEET NORTH OF THE RE-ESTABLISHED SOUTHWEST CORNER AND 2614.77 FEET SOUTH OF THE NORTHEAST CORNER OF SECTION 26.

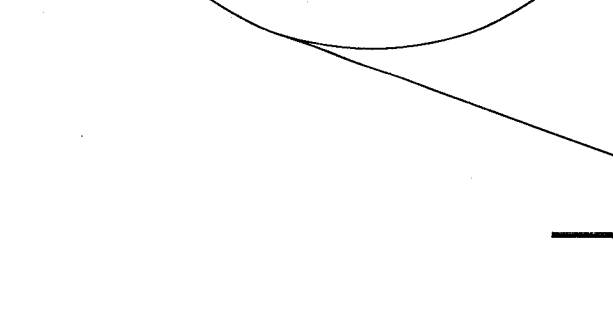
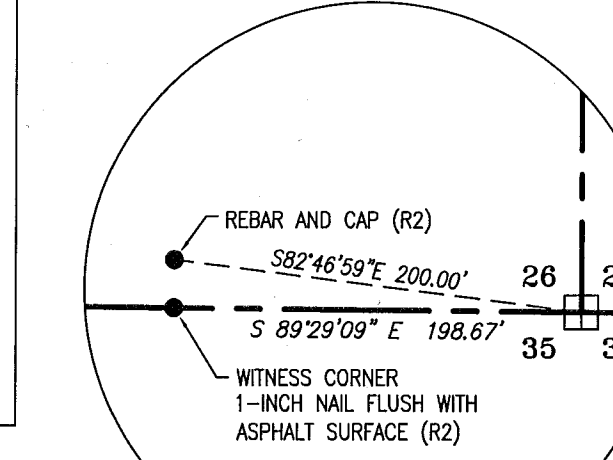
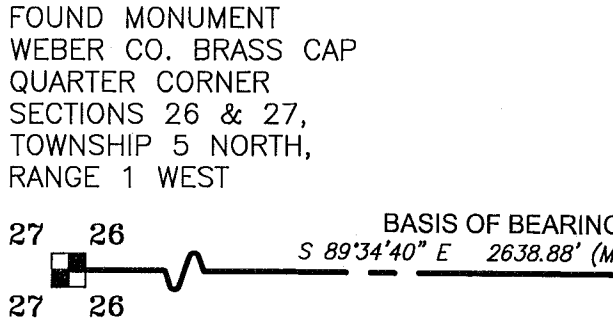
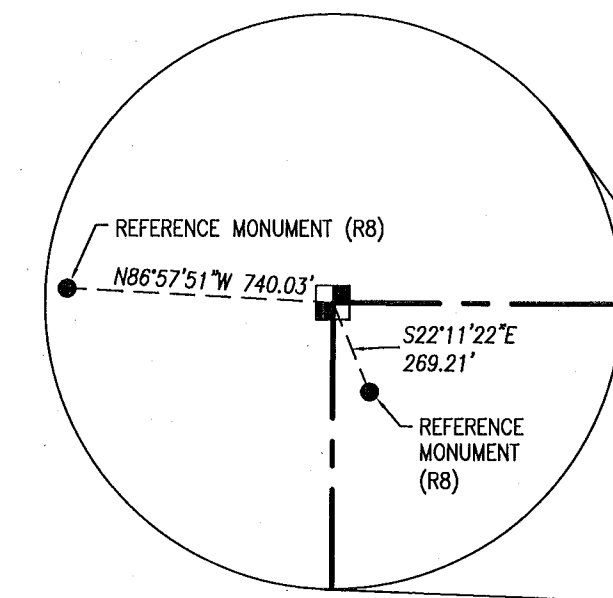
THE EAST-WEST CENTER QUARTER LINE, WHICH LIES EAST OF THE CENTER QUARTER CORNER OF SECTION 26, IS BASED ON THE FOUND WEBER COUNTY MONUMENT AT THE CENTER QUARTER CORNER OF SECTION 26 AND THE RE-ESTABLISHED POSITION OF THE EAST QUARTER CORNER PER THIS MAP.

THE NORTH-SOUTH CENTER QUARTER LINE, WHICH LIES SOUTH OF THE CENTER QUARTER CORNER OF SECTION 26, IS BASED ON THE FOUND WEBER COUNTY MONUMENT AT THE CENTER QUARTER CORNER OF SECTION 26 AND THE RE-ESTABLISHED POSITION OF THE SOUTH QUARTER, PER DAVIS COUNTY SURVEYOR'S OFFICE.

BASIS OF BEARINGS:

THE BEARING SOUTH 89°34'40" EAST (STATE PLANE NAD 1927 GRID BEARING AS ESTABLISHED BY THE WEBER COUNTY SURVEYOR'S OFFICE) ALONG THE LINE FROM THE QUARTER CORNER COMMON WITH SECTIONS 26 AND 27 TO THE CENTER QUARTER OF SECTION 26 AS SHOWN ON THAT CERTAIN RECORD OF SURVEY PREPARED BY THE WEBER COUNTY SURVEYOR'S OFFICE DATED MAY 11, 2005 FILED AS SURVEY FILING NUMBER 3469, WAS USED AS THE BASIS OF BEARINGS FOR THIS MAP.

REVISION:	DATE:	DESCRIPTION:
1	12/9/2019	RELEASED TO FILE AT DAVIS AND WEBER COUNTY SURVEYOR OFFICES



LEGEND & ABBREVIATIONS

- SECTION CORNER AS NOTED
- SECTION CORNER, NOT FOUND
- 1/4 CORNER AS NOTED
- 1/4 CORNER, NOT FOUND
- SECTION LINE
- COUNTY LINE
- MON. MONUMENT
- MEAS. MEASURED
- R1 PAGE 839 OF "DAVIS COUNTY SURVEYOR'S OFFICE - SECTION CORNER TIES"
- R2 PAGE 840 OF "DAVIS COUNTY SURVEYOR'S OFFICE - SECTION CORNER TIES"
- R3 WEBER COUNTY "COUNTY MONUMENT POSITIONS" MAP FOR TOWNSHIP 5 NORTH, RANGE 1 WEST
- R4 DAVIS COUNTY "TOWNSHIP REFERENCE PLAT" FOR TOWNSHIP 5 NORTH, RANGE 1 WEST
- R5 RECORD OF SURVEY No. 3489 "OWNERSHIP RECORDS RESEARCH FOR CROFTS, CANAAN HAY Co., & BYBEE PROPERTIES" PREPARED BY MARTIN B. MOORE AND ERNEST D. ROWLEY OF THE WEBER COUNTY SURVEYOR'S OFFICE.
- R6 "DECLARATION OF COUNTY LINE COMMON TO WEBER COUNTY AND DAVIS COUNTY, UTAH" PREPARED BY MARTIN B. MOORE, WEBER COUNTY SURVEYOR, AND MAX B. ELLIOTT, DAVIS COUNTY SURVEYOR, RECORDED AS ENTRY No. 1885948 IN BOOK 56 AT PAGES 88-92, WEBER COUNTY RECORDERS OFFICE. DISTANCES SHOWN ARE UTAH STATE PLANE GRID.
- R7 ORIGINAL SURVEY PREPARED BY AUG. D. FERRON, DATED APRIL 14, 1871 BY THE SURVEYOR GENERAL'S OFFICE. SURVEY OBTAINED FROM THE B.L.M. OFFICE IN S.L.C. UTAH.
- R8 "WEBER COUNTY SURVEYOR'S SECTION CORNER TIES" MAP 03-36, MONUMENT NO. 51126-0336

