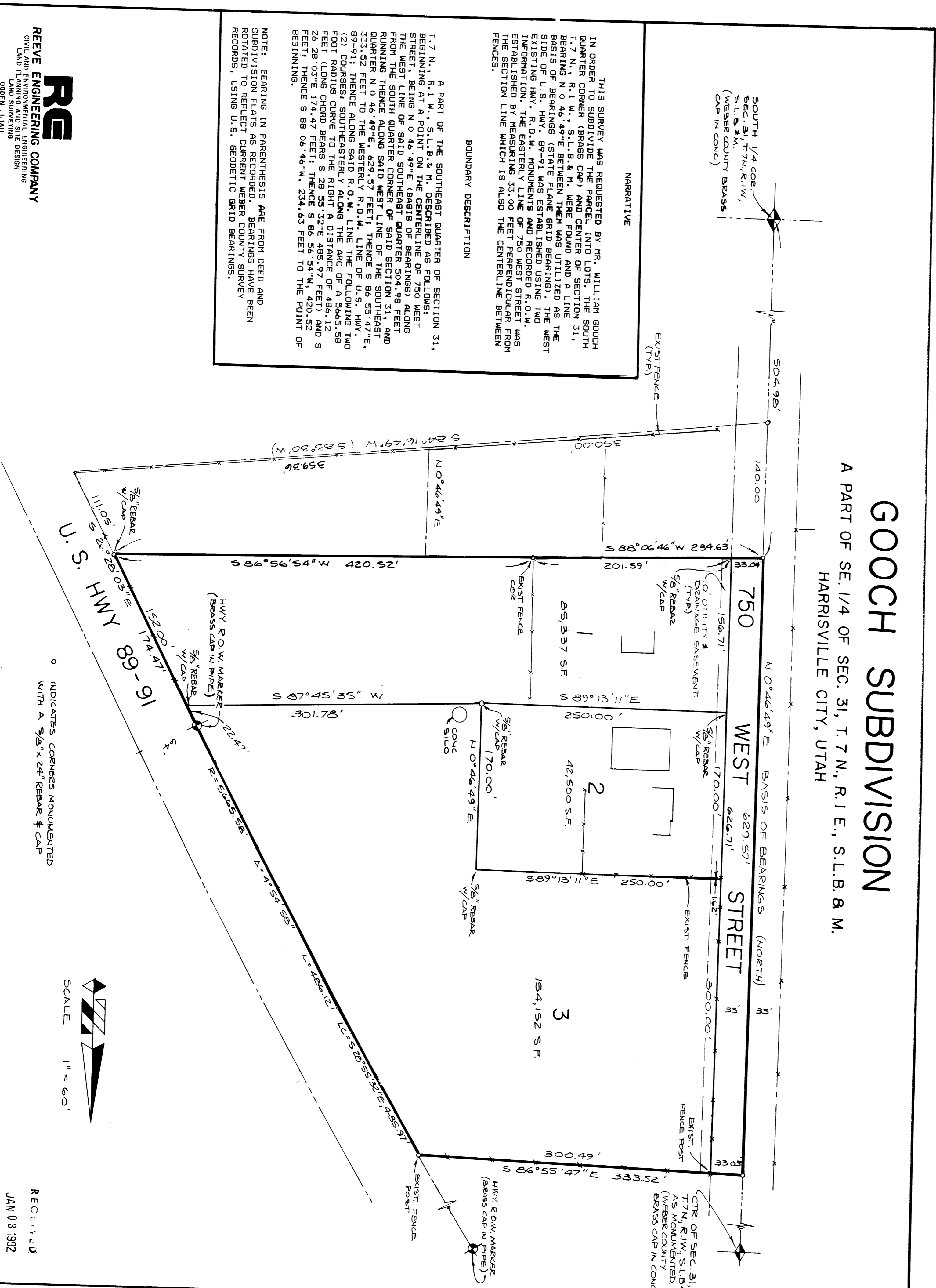


GOOCH SUBDIVISION

A PART OF SE. 1/4 OF SEC. 31, T. 7 N., R. 1 E., S.L.B. 8 M. HARRISVILLE CITY, UTAH



NARRATIVE

THIS SURVEY WAS REQUESTED BY MR. WILLIAM GOOCH IN ORDER TO SUBDIVIDE THE PARCEL INTO LOTS WITHIN QUARTER CORNER (BRASS CAP) AND CENTER OF SECTION 31, T. 7 N., R. 1 E., S.L.B. 8 M. (WEBER COUNTY BEASIS CAP IN CONC.) (WEBER COUNTY BEASIS CAP IN CONC.)

THE PARCEL WAS UTILIZED AS THE BASIS OF BEARINGS (STATE PLANE) AND A LINE BEARING N. 0.44° 44' 11" E., 156.71' WAS ESTABLISHED FROM THE SOUTH QUARTER CORNER OF SAID SECTION 31, T. 7 N., R. 1 E., S.L.B. 8 M. (WEBER COUNTY BEASIS CAP IN CONC.) TO THE CENTER OF THE QUARTER CORNER (BRASS CAP) AND CENTER OF SECTION 31, T. 7 N., R. 1 E., S.L.B. 8 M. (WEBER COUNTY BEASIS CAP IN CONC.)

THE CENTER OF THE QUARTER CORNER (BRASS CAP) AND CENTER OF SECTION 31, T. 7 N., R. 1 E., S.L.B. 8 M. (WEBER COUNTY BEASIS CAP IN CONC.) WAS ESTABLISHED BY MEASUREMENTS AND RECORDED R.C.M. RECORDS, USING U.S. GEODETIC GRID BEARINGS.

BOUNDARY DESCRIPTION

A PART OF THE SOUTHEAST QUARTER OF SECTION 31, T. 7 N., R. 1 E., S.L.B. 8 M., DESCRIBED AS FOLLOWS: BEGINNING AT A POINT ON THE CENTRAL LINE OF 750 WEST STREET, THE WEST LINE OF SAID QUARTER CORNER (BRASS CAP) AND CENTER OF SECTION 31, T. 7 N., R. 1 E., S.L.B. 8 M. (WEBER COUNTY BEASIS CAP IN CONC.) WAS ESTABLISHED BY MEASUREMENTS AND RECORDED R.C.M. RECORDS, USING U.S. GEODETIC GRID BEARINGS.

THE CENTER OF THE QUARTER CORNER (BRASS CAP) AND CENTER OF SECTION 31, T. 7 N., R. 1 E., S.L.B. 8 M. (WEBER COUNTY BEASIS CAP IN CONC.) WAS ESTABLISHED BY MEASUREMENTS AND RECORDED R.C.M. RECORDS, USING U.S. GEODETIC GRID BEARINGS.

NOTE: BEARINGS IN PARENTHESES ARE FROM DEED AND SUBDIVISION PLATS AS RECORDED BEARINGS, BEEN ROTATED TO REFLECT CURRENT WEBER COUNTY SURVEY RECORDS, USING U.S. GEODETIC GRID BEARINGS.

REVE ENGINEERING COMPANY
 LAND SURVEYING
 1000 N. MAIN ST.
 HARRISVILLE, UTAH

APPROVED BY THE HARRISVILLE CITY ENGINEERING COMMISSION
 HARRISVILLE CITY, UTAH
 1991

I HEREBY CERTIFY THAT I HAVE CORRECTLY INVESTIGATED THE FACTS OF SURVEY OF THE SUBDIVISION AND THAT THE LOTS ARE BEING SUBDIVIDED ACCORDING TO THE CITY ENGINEERING COMMISSION'S APPROVAL AND THE CITY ENGINEERING COMMISSION'S RECORDS.

THIS IS TO CERTIFY THAT THIS PLAN AND DESCRIPTION OF THIS LAND WERE FOR APPROVAL AND ACCEPTED BY THE CITY ENGINEERING COMMISSION OF HARRISVILLE, UTAH, THIS 1991.

I HEREBY CERTIFY THAT THE REQUIREMENTS OF ALL APPLICABLE STATUTES AND ORDINANCES PREVIOUS TO APPROVAL BY THE CITY ENGINEERING COMMISSION HAVE BEEN COMPLIED WITH.

COMMISSION EXPIRES _____
 NOTARY PUBLIC _____

SURVEYOR'S CERTIFICATE

I, JOHN P. REEVE, A REGISTERED PROFESSIONAL SURVEYOR IN THE STATE OF UTAH, DO HEREBY CERTIFY THAT THIS PLAN OF THE GOOCH SUBDIVISION IN HARRISVILLE, UTAH, IS CORRECTLY REPRESENTED BY THE BEARINGS AND DISTANCES SHOWN THEREON, AND THAT THE SAME HAVE BEEN MEASURED AND FOUND TO BE TRUE TO THE BEST OF MY KNOWLEDGE AND BELIEF.

I HEREBY CERTIFY THAT THE REQUIREMENTS OF ALL APPLICABLE STATUTES AND ORDINANCES PREVIOUS TO APPROVAL BY THE CITY ENGINEERING COMMISSION HAVE BEEN COMPLIED WITH.

SIGNED THIS 30TH DAY OF MAY 1991.

30492
 UTAH LICENSE NUMBER

JOHN P. REEVE
 SURVEYOR

ACKNOWLEDGEMENT

WE, THE UNDERSIGNED, OWNERS OF THE HEREIN-DESCRIBED LAND, HEREBY SET FORTH AND SUBDIVIDE THE SAME INTO LOTS AND STREETS AS SHOWN ON THIS PLAN, AND HAVE SAID TRACT OF LAND IN FULL ACQUITTANCE OF OURSELVES AND OUR HEIRS, SUCCESSORS, AND ASSIGNS, AND TO THE END OF THE WORLD, TO THE CITY OF HARRISVILLE, UTAH, ALL THOSE PARTS OF SAID TRACT OF LAND DESIGNATED AS STREETS, THE SAME TO BE USED AS PUBLIC THROTTLES, AND ALSO TO DEDICATE TO HARRISVILLE CITY, UTAH, THE SAME FOR PUBLIC UTILITY AND DRAINAGE PURPOSES, AND OPERATION OF PUBLIC UTILITIES AND DRAINAGE PURPOSES, AND OPERATION OF PUBLIC UTILITIES AND DRAINAGE PURPOSES, AS MAY BE AUTHORIZED BY HARRISVILLE CITY.

THE UNDERSIGNED HEREBY CERTIFY THAT THIS SUBDIVISION WAS MET ALL THE REQUIREMENTS OF HARRISVILLE CITY ORDINANCES.

SIGNED THIS _____ DAY OF _____ 19____

ACKNOWLEDGEMENT

STATE OF UTAH }
 COUNTY OF _____ }
 I, _____, PERSONALLY APPEARED BEFORE ME, THE UNDERSIGNED NOTARY PUBLIC, ON THE _____ DAY OF _____, 19____, AND acknowledged to me the contents of the foregoing instrument, and declared under oath that the contents thereof were true and correct.

COMMISSION EXPIRES _____
 NOTARY PUBLIC _____