

# RECORD OF SURVEY

## PART OF THE NORTH HALF OF SECTION 32, TOWNSHIP 7 NORTH, RANGE 1 EAST, SALT LAKE BASE AND MERIDIAN, U.S. SURVEY

### WEBER COUNTY, UTAH

### JULY, 2020

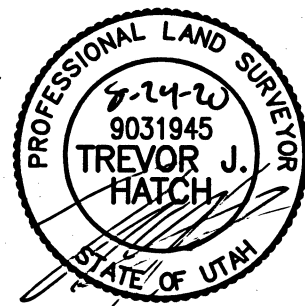
#### SURVEYOR'S CERTIFICATE

I, **TREVOR HATCH**, DO HEREBY CERTIFY THAT I AM A PROFESSIONAL LAND SURVEYOR IN THE STATE OF UTAH IN ACCORDANCE WITH TITLE 58, CHAPTER 22, PROFESSIONAL ENGINEERS AND PROFESSIONAL LAND SURVEYORS ACT; AND THAT I HAVE COMPLETED A SURVEY OF THE PROPERTY DESCRIBED ON THIS PLAT IN ACCORDANCE WITH SECTION 17-23-17 AND HAVE VERIFIED ALL MEASUREMENTS, AND HAVE PLACED MONUMENTS AS REPRESENTED ON THIS PLAT. I FURTHER CERTIFY THAT THIS PLAT IS A CORRECT REPRESENTATION OF THE LAND SURVEYED AND HAS BEEN PREPARED IN CONFORMITY WITH THE MINIMUM STANDARDS AND REQUIREMENTS OF THE LAW.

SIGNED THIS 14<sup>th</sup> DAY OF August, 2020

9031945

UTAH LICENSE NUMBER



#### BASIS OF BEARINGS

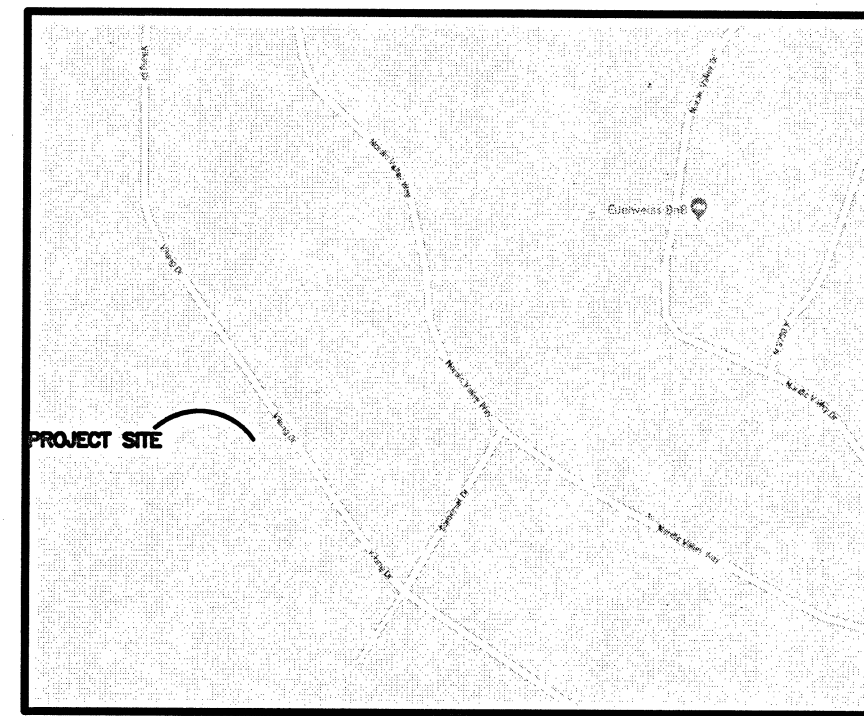
THE BASIS OF BEARING FOR THIS PLAT IS A LINE BETWEEN THE NORTHEAST CORNER AND THE SOUTHEAST CORNER OF SECTION 32, TOWNSHIP 7 NORTH, RANGE 1 EAST, SALT LAKE BASE AND MERIDIAN, U.S. SURVEY, SHOWN HEREON AS: S00°03'24"W

#### NARRATIVE

THE PURPOSE OF THIS SURVEY WAS TO ESTABLISH THE PROPERTY BOUNDARIES ON THE GROUND. THERE ARE NO STREET MONUMENTS, THEREFORE EXISTING IMPROVEMENTS AND AN ADJACENT JSH SURVEY WERE USED TO ESTABLISH THE BOUNDARY. POINTS WERE FOUND AS SHOWN HEREON. ALL CORNERS NOT FOUND WERE SET WITH A 5/8" REBAR AND PLASTIC CAP STAMPED "REEVE AND ASSOCIATES".

#### LEGAL DESCRIPTION

ALL OF LOT 89, SILVER BELL ESTATES NO. 2, AS PER THE OFFICIAL PLAT THEREOF ON RECORD IN THE OFFICE OF THE WEBER COUNTY RECORDER AS RECORDED AT BOOK 15, PAGE 44.



VICINITY MAP

SCALE: NONE

**Reeve & Associates, Inc.**  
 5149 SOUTH 1500 WEST, RIVERDALE, UTAH 84405  
 TEL: (801) 621-3100 FAX: (801) 621-2866 www.reeve-associates.com  
 CIVIL ENGINEERS • SURVEYORS • LANDSCAPE ARCHITECTS

REVISIONS	DESCRIPTION	DATE

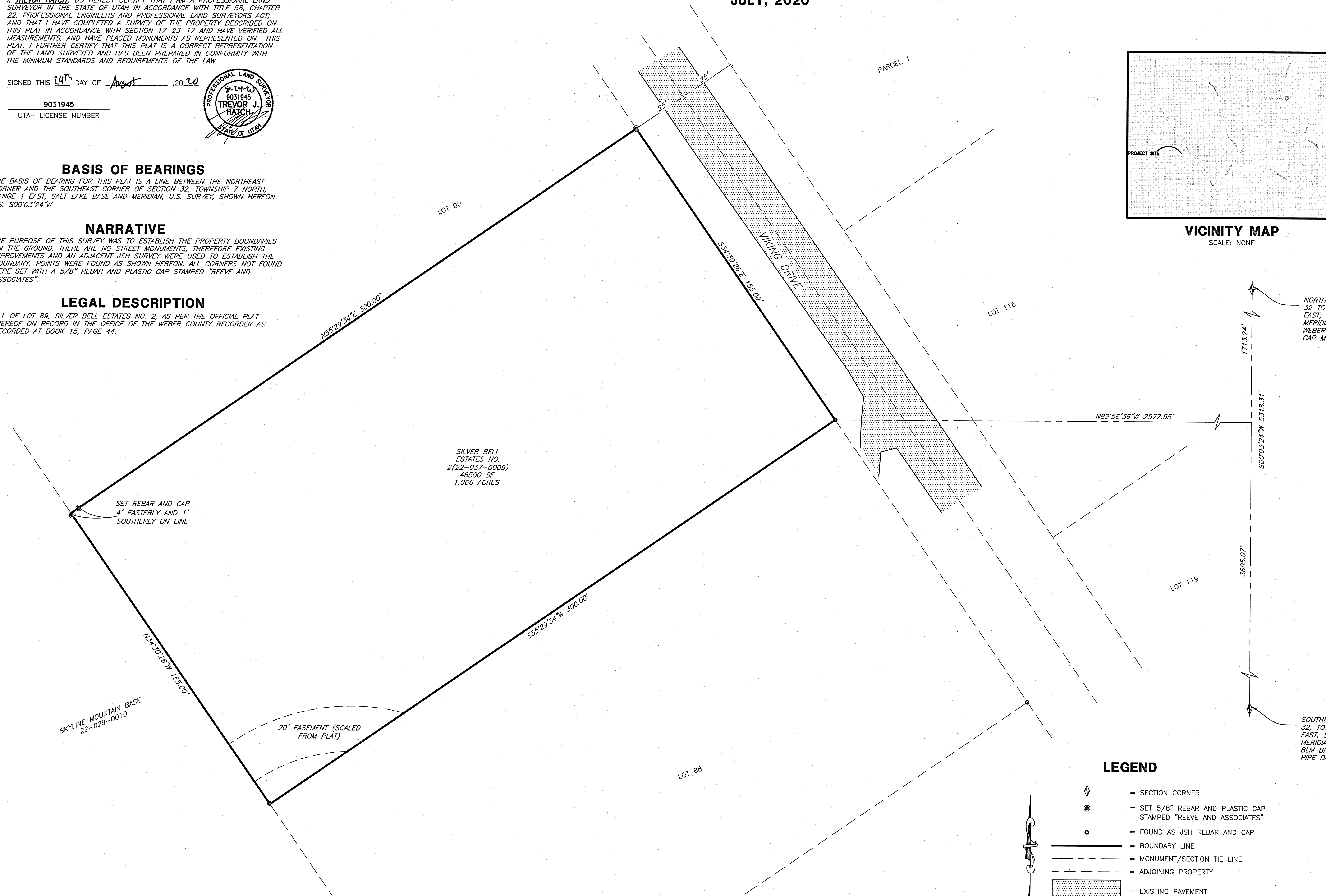
**RECORD OF SURVEY**  
 PART OF THE NORTH HALF OF SECTION 32, TOWNSHIP 7 NORTH, RANGE 1 EAST, SALT LAKE BASE AND MERIDIAN, U.S. SURVEY, WEBER COUNTY, UTAH

**LOT 89, SILVER BELL ESTATES NO. 2**

**Project Info.**

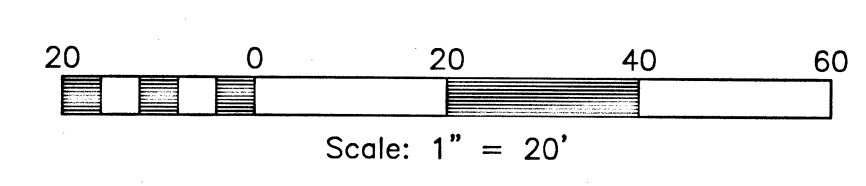
Surveyor:	T. HATCH
Designer:	T. HATCH
Begin Date:	7-22-2020
Name:	WEBER COUNTY RECORD OF SURVEY
Scale:	1"=20'
Checked:	
Number:	7466-01

Sheet	<b>1</b>
<b>1</b>	Sheets



#### LEGEND

- = SECTION CORNER
- = SET 5/8" REBAR AND PLASTIC CAP STAMPED "REEVE AND ASSOCIATES"
- = FOUND AS JSH REBAR AND CAP
- = BOUNDARY LINE
- = MONUMENT/SECTION TIE LINE
- = ADJOINING PROPERTY
- = EXISTING PAVEMENT



**RECEIVED**  
 JUL 23 2020  
 BY: 0599