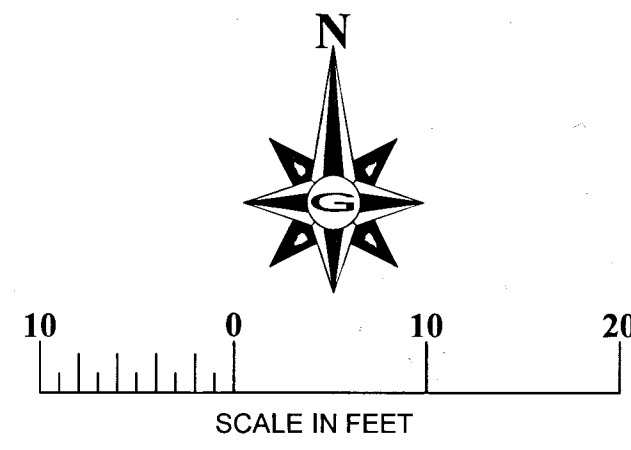
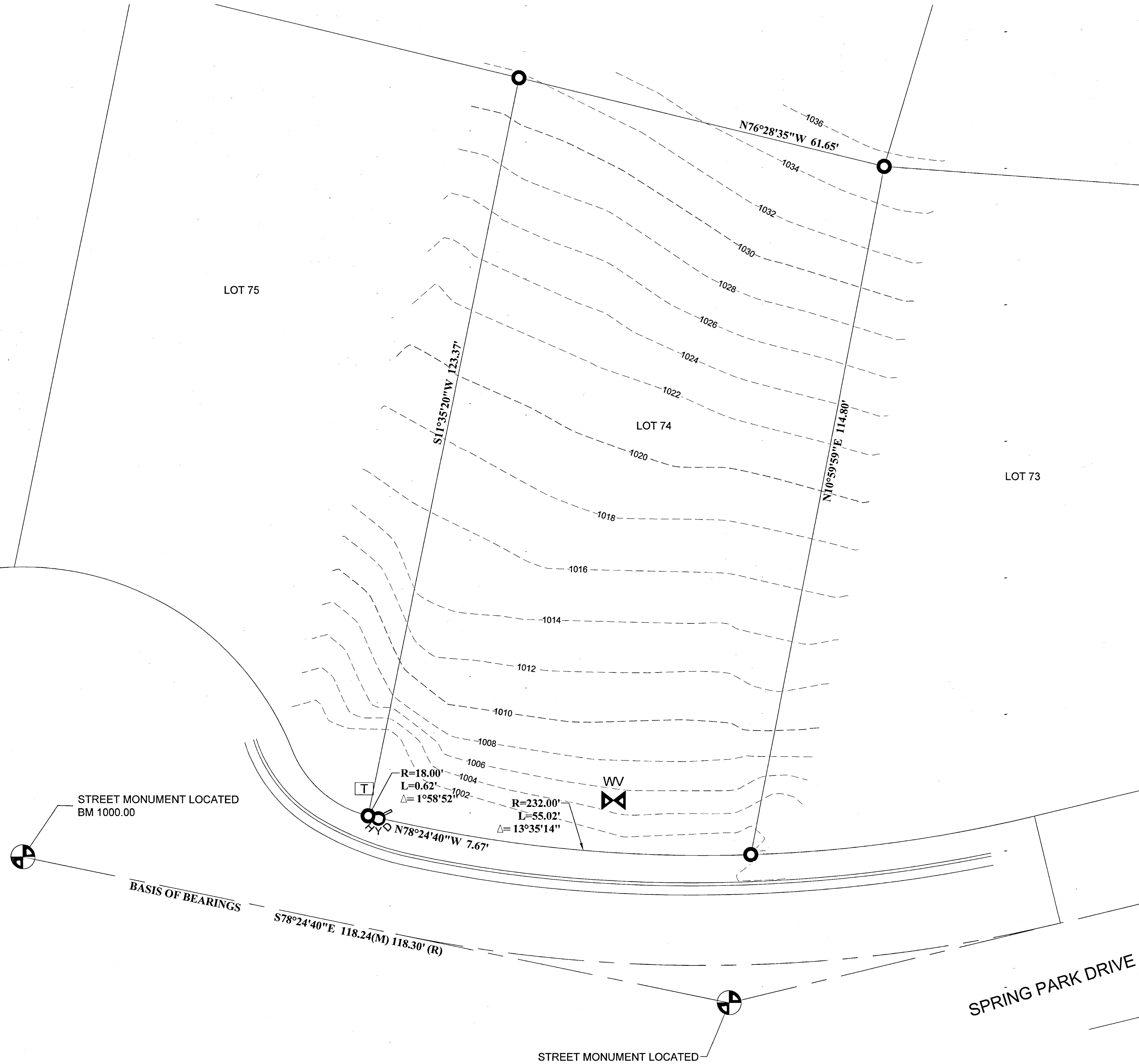


LOT 74R SUMMIT EDEN PHASE 1C
SPRING PARK DRIVE
 LOCATED IN THE SOUTHEAST 1/4 SECTION 5, TOWNSHIP 7 NORTH,
 RANGE 2 EAST, SALT LAKE BASE AND MERIDIAN.



| LEGEND | |
|--------|-----------------------------------|
| | SECTION CORNER (LOCATED) |
| | #5 REBAR WITH PLASTIC CAP (NOLTE) |
| | STREET MONUMENT |
| | MONUMENT LINE |
| | BOUNDARY LINE |
| | CENTERLINE |
| | CHAIN LINK FENCE |
| | STORM DRAIN LINE |
| | SEWER LINE |
| | POWER POLE |
| | FIRE HYDRANT |

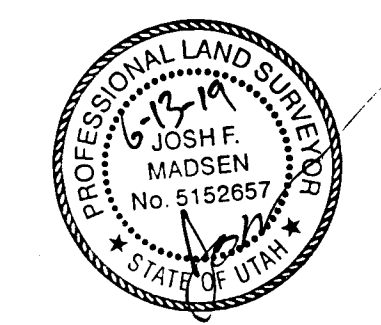


RECORD OF SURVEY
PARCEL 23-130-0041

SURVEYOR'S CERTIFICATE

I, JOSH F. MADSEN, DO HEREBY CERTIFY THAT I AM A PROFESSIONAL LAND SURVEYOR AND THAT I HOLD LICENSE NO. 5152657 AS PRESCRIBED BY THE LAWS OF THE STATE OF UTAH. I FURTHER CERTIFY THAT, BY THE AUTHORITY OF THE OWNER I HAVE MADE A SURVEY OF THE PROPERTY DESCRIBED HEREON, AND THAT THE SAME HAS BEEN CORRECTLY SURVEYED AND STAKED ON THE GROUND AS SHOWN ON THIS PLAT.

JOSH F. MADSEN, P.L.S.
 NO. 5152657



NARRATIVE

THIS SURVEY REQUESTED BY BRAD OLSEN FOR THE PURPOSES OF RETRACING/MONUMENTING THE BOUNDARY AND GENERATE CONTOURS OF THE SITE FOR FUTURE SITE PLAN/DEVELOPMENT. THE BASIS OF BEARING USED IS SOUTH 78°24'40" EAST BETWEEN TWO STREET MONUMENTS LOCATED ON SPRING PARK DRIVE (AS SHOWN). THE SITE BENCHMARK IS 1000.00' ON THE CENTERLINE MONUMENT AS SHOWN HEREON.

BOUNDARY DESCRIPTION

ALL OF LOT 74R, SUMMIT EDEN PHASE 1C, AS RECORDED AT THE WEBER COUNTY RECORDERS OFFICE AS ENTRY NUMBER 2672945.

CONTAINS 7,495 SQFT

GILSON ENGINEERING
 CONSULTING ENGINEERS AND SURVEYORS
 www.gilsonengineering.com
 Draper Office:
 12401 South 450 East (801) 571-9414
 Fax: (801) 571-9449

RECEIVED
 OCT 23 2020
 BY: G120