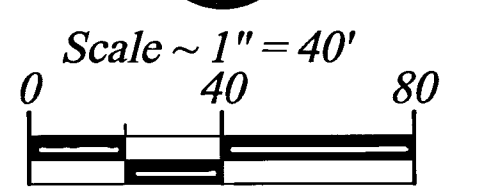


THE SUMMIT AT SKI LAKE No.3 - 1st Amendment

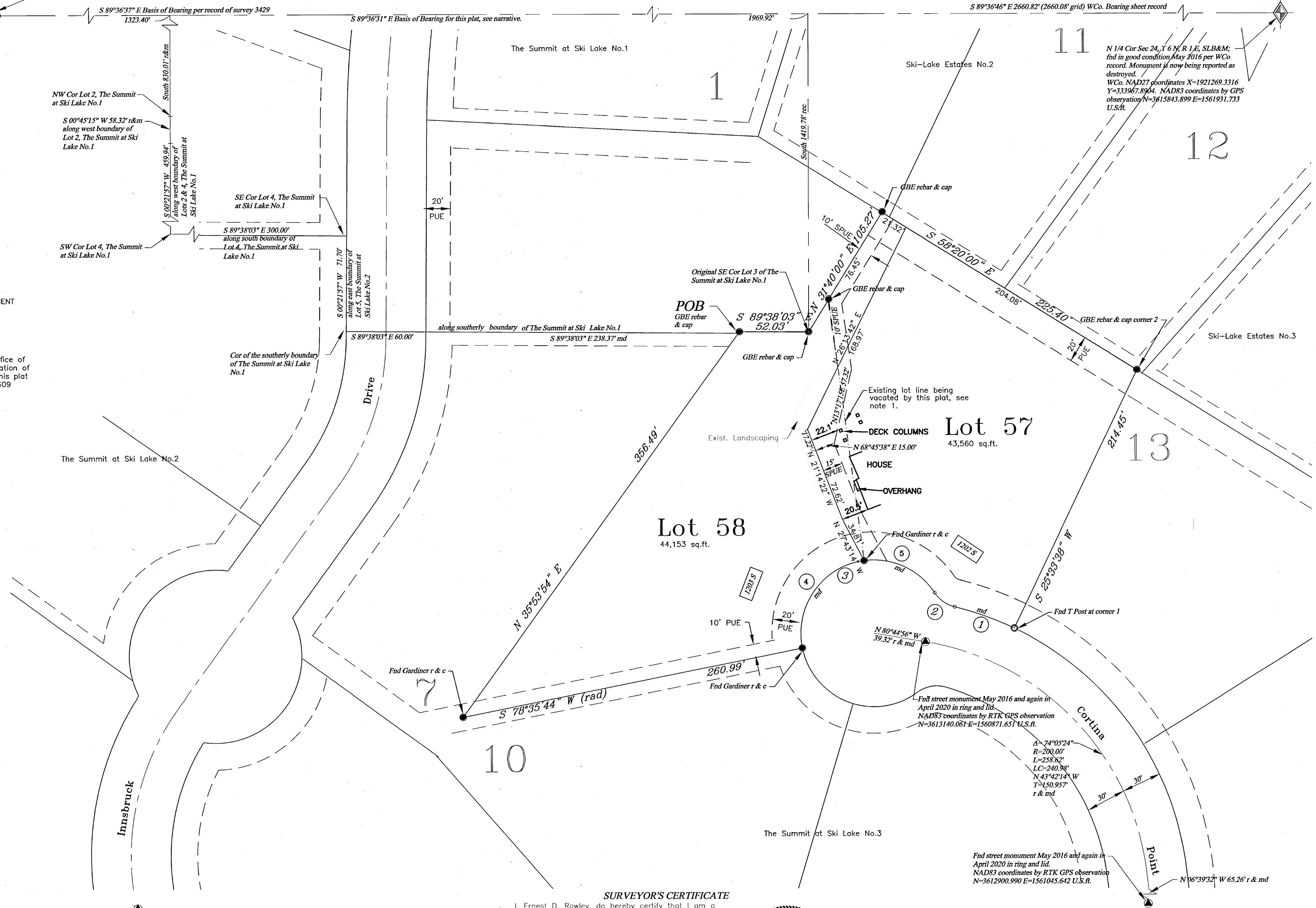
PART OF THE NW 1/4 OF SEC. 24, T 6 N, R 1 E, SLB&M, Lots 11 & 12, The Summit At Ski Lake No.3
UNINCORPORATED WEBER COUNTY, UTAH - Date of Survey: May 2016

NW Cor Sec 24, T 6 N, R 1 E, SLB&M;
In May 2016 missing the cap, the pipe was
still in place. Monument is now being
reported as destroyed. Coordinates are record
as derived by the County Surveyor's Office
prior to the monument being damaged or
destroyed.
WCo. NAD27 coordinates X=1918609.3149
Y=333985.8713. NAD83 coordinates by
GPS observation N=3615862.076
E=1559270.730 U.S.R.



- Legend**
- - - EXISTING FENCE
 - - - EASEMENTS
 - - - STREET CENTERLINE
 - ◆ FND SECTION CORNER
 - FND STREET MONUMENT
 - FND CURB NAIL
 - FND REBAR AND CAP
 - SET #5x24" REBAR AND CAP STAMPED LANDMARK
 - r&m RECORD & MEASURED
 - md MEASURED DATA
 - WCo WEBER COUNTY SURVEY
 - SPUE SEWER PUBLIC UTILITY EASEMENT

NOTE:
1. The recording of this Amended plat in the office of the County Recorder acts as a statutory vacation of the original plat which is being modified by this plat amendment in accordance with UCA 10-9a-609 and/or UCA 17-27a-609.

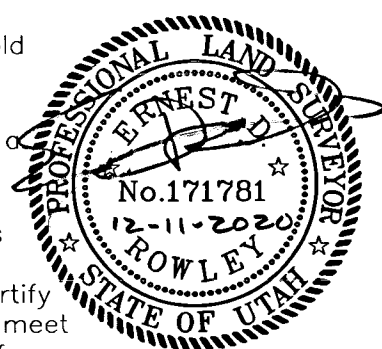


BOUNDARY DESCRIPTION
All of Lots 11 and 12, The Summit at Ski Lake No.3 as recorded in Plat book 51 page 94 each being a part of the Northwest Quarter of Section 24, Township 6 North, Range 1 East, Salt Lake Base and Meridian, Huntsville District, Weber County, Utah.

NARRATIVE
Due to a house being constructed which sits on the lot line between lot 11 and 12 the purpose of the survey is to modify the lot line between lot 11 and 12 of the referenced subdivision so that the newly constructed house will have the required side yard clearance. The owners have agreed to convey the property to each other as shown hereon to effectuate the lot line adjustment. The modified Lots 11 and 12 shall hereafter be identified as Lots 57 and 58.
The basis of bearing of this survey is as noted in the original subdivision plats as being South 89°36'33" West between the monumented location of the Northwest Corner and the North Quarter Corner of Section 24, T6N, R1E. Weber County Survey has different bearings of record for this line, one S 89°36'44" E as noted on the subdivision plats and another being S 89°36'46" E noted on the published bearing sheets, also a third one shows on ROS 3429. The basis is being held to the GPS measured bearing that we collected before the monuments were destroyed. The physical location of the subdivision street monuments and lot rebars as shown are also being held. Thus the basis of bearing of this plat will differ from that of record as well as some of the lot lines.
Existing street monuments and lot corners were located by survey as noted hereon and found to be inconsistent with the plotted record. Adjustments were made to the plat locations to conform to the field observed locations of the monuments.
Because there was only a T-post found at corner 1 and a GBE rebar and cap found at corner 2 the record bearing was held for this boundary from corner 2.

SURVEYOR'S CERTIFICATE

I, Ernest D. Rowley, do hereby certify that I am a professional land surveyor in the State of Utah and hold license no. 171781-2201 in accordance with Title 58, Chapter 22 known as the Professional Engineers and Professional Land Surveyor's Licensing Act, have made survey of the property(s) shown hereon in accordance with UCA 17-23-17, verifying measurements, and placing monuments as represented. That this plat was prepared from the field notes of this survey and from documents and records as noted hereon. I further certify that, to the best of my knowledge and belief, all lots meet the current requirements of the Land Use Ordinance of Weber county.



CURVE DATA					
CURVE	DELTA	RADIUS	TANGENT	LENGTH	CH BRG & DIST
1	11°54'47"	230.00'	24.00'	47.62'	N 70°24'48" W 47.74'
2	42°55'02"	25.00'	9.83'	18.73'	N 54°54'35" E 18.29'
3	158°00'57"	55.00'	283.16'	151.68'	S 67°32'26" W 107.98'
4	93°56'05"	55.00'	58.91'	90.17'	S 35°30'07" W 80.41'
5	64°04'51"	55.00'	34.42'	61.51'	N 65°29'31" W 58.36'

Landmark Surveying, Inc.
A Complete Land Surveying Service
www.LandmarkSurveyUtah.com

4646 South 3500 West - #A-3
West Haven, UT 84401
801-731-4075

DEVELOPER: Scott & Becki Adams
Address: 1216 South Cortina Point (6625 East), Huntsville, UT

1 of 8

Amended Subdivision Plat - Record of Survey

Revisions

DRAWN BY: EDR
CHECKED BY: ...
DATE:
FILE: 3628

RECEIVED
DEC 31 2020
BY: G725

Weber County Surveyor

Project Name: 3628 Scott Adams amended plat.dwg Date: December 11, 2020 1:02 PM Sheet: 1111