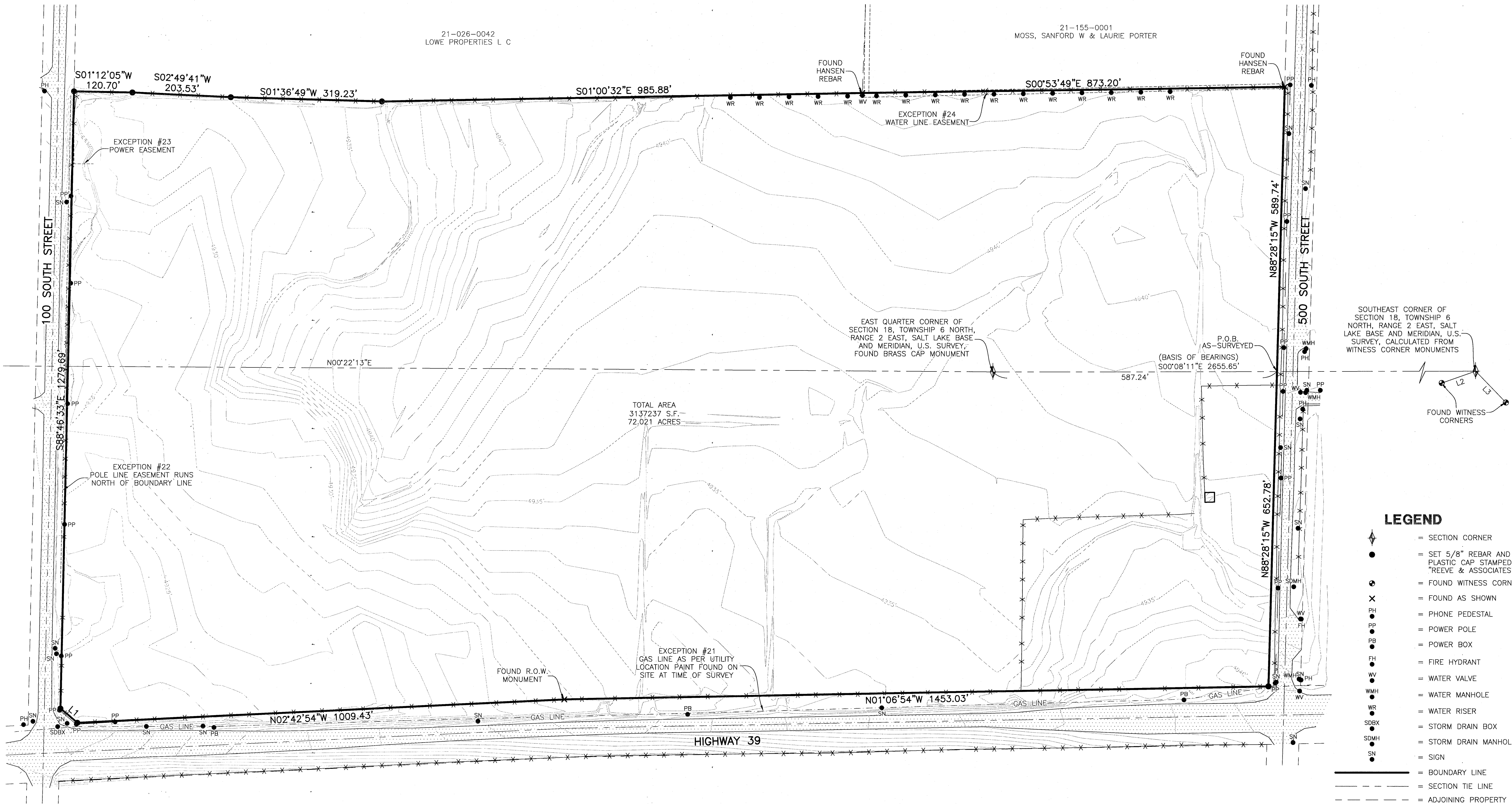


ALTA/NSPS SURVEY

PART OF THE EAST HALF OF SECTION 18 AND THE WEST HALF OF SECTION 17, TOWNSHIP 6 NORTH, RANGE 2 EAST, SALT LAKE BASE AND MERIDIAN, U.S. SURVEY
 WEBER COUNTY, UTAH
 NOVEMBER, 2020

21-026-0042
 LOWE PROPERTIES L C

21-155-0001
 MOSS, SANFORD W & LAURIE PORTER



TOTAL AREA
 3137237 S.F.
 72.021 ACRES

EAST QUARTER CORNER OF
 SECTION 18, TOWNSHIP 6 NORTH,
 RANGE 2 EAST, SALT LAKE BASE
 AND MERIDIAN, U.S. SURVEY;
 FOUND BRASS CAP MONUMENT

SOUTHEAST CORNER OF
 SECTION 18, TOWNSHIP 6
 NORTH, RANGE 2 EAST, SALT
 LAKE BASE AND MERIDIAN, U.S.
 SURVEY, CALCULATED FROM
 WITNESS CORNER MONUMENTS

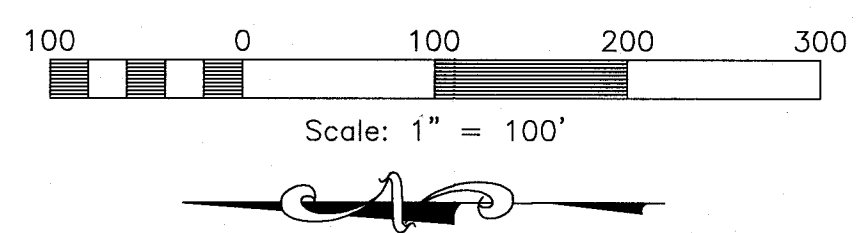
FOUND WITNESS
 CORNERS

LEGEND

- = SECTION CORNER
- = SET 5/8" REBAR AND PLASTIC CAP STAMPED "REEVE & ASSOCIATES"
- = FOUND WITNESS CORNER
- = FOUND AS SHOWN
- = PHONE PEDESTAL
- = POWER POLE
- = POWER BOX
- = FIRE HYDRANT
- = WATER VALVE
- = WATER MANHOLE
- = WATER RISER
- = STORM DRAIN BOX
- = STORM DRAIN MANHOLE
- = SIGN
- = BOUNDARY LINE
- = SECTION TIE LINE
- = ADJOINING PROPERTY
- = EXISTING FENCE LINE
- = EASEMENT LINE
- = EXISTING PAVEMENT
- = EXISTING CONCRETE
- = EXISTING STRUCTURE

LINE TABLE

LINE	BEARING	DISTANCE
L1	N39°56'32"E	45.65'
L2	N19°30'34"W	74.19'
L3	S46°19'34"W	90.31'



Reeve & Associates, Inc.
 12A
 515 SOUTH 100 WEST, SUITE 100, MDC, MDC
 TRL (801) 621-3100 FAX (801) 621-3686 www.reeve-assoc.com
 LAND PLANNERS • CIVIL ENGINEERS • LAND SURVEYORS
 TRAFFIC ENGINEERS • STRUCTURAL ENGINEERS • LANDSCAPE ARCHITECTS

REVISIONS	DESCRIPTION
DATE	

ALTA/NSPS SURVEY
 PART OF THE EAST 1/2 OF SECTION 18 AND THE WEST 1/2 OF SECTION 17,
 TOWNSHIP 6 NORTH, RANGE 2 EAST, SALT LAKE BASE AND MERIDIAN, U.S. SURVEY
 WEBER COUNTY, UTAH

THE MIDDLE FIELD LC

RECEIVED
 MAY 20 2021
 BY: G860

Project Info.

Surveyor:	T. HATCH
Designer:	N. ANDERSON
Begin Date:	11-03-2020
Name:	WEBER COUNTY ALTA SURVEY
Scale:	1"=30'
Checked:	
Number:	7562-01