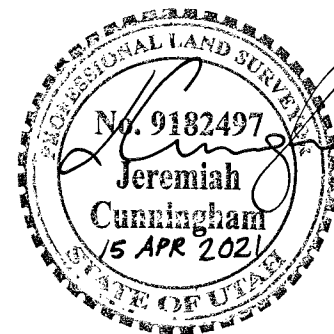


**CERTIFICATE**

I, JEREMIAH R. CUNNINGHAM, A PROFESSIONAL LAND SURVEYOR ACCORDING TO THE LAWS OF THE STATE OF UTAH, DO CERTIFY THAT I HAVE SURVEYED THE PARCEL OF GROUND SHOWN HEREON ACCORDING TO UTAH STATE CODE 17-23-17.



**NARRATIVE**

THE PURPOSE OF THE SURVEY WAS TO IDENTIFY AND MARK THE PROPERTY CORNERS AND SET POINTS ALONG THE LOT LINES. RECORD BEARINGS AND DISTANCES ARE TAKEN FROM THE DEDICATION PLAT FOR HOMESTEAD ROY PAVILION SUBDIVISION (ENTRY #2439608, WEBER COUNTY RECORDER'S OFFICE; "HOMESTEAD").

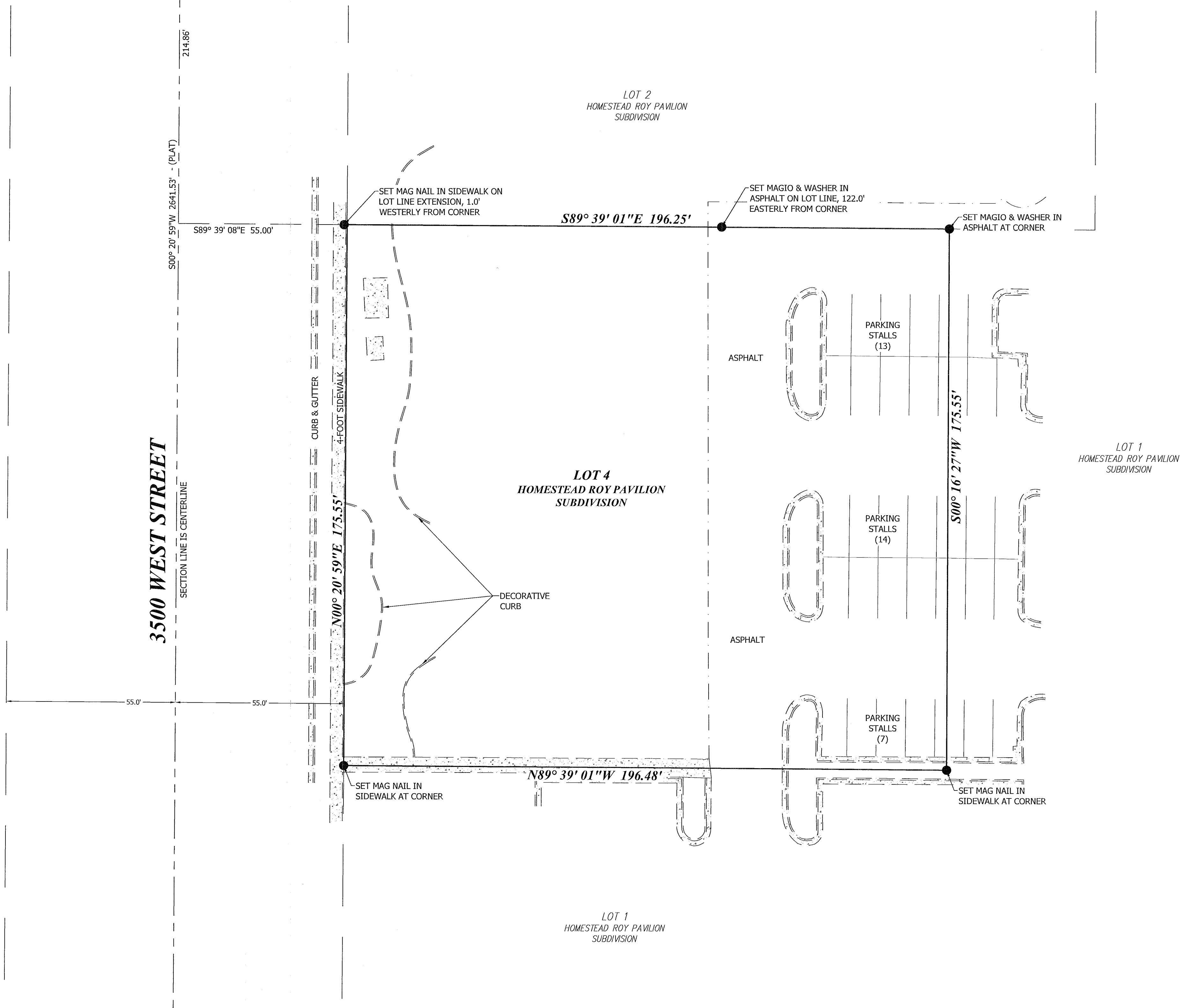
WE ATTEMPTED TO LOCATE THE WEST QUARTER CORNER AND SOUTHWEST CORNER OF SECTION 22, WHICH IS THE BASIS OF BEARING FOR THE HOMESTEAD PLAT, BUT THE SOUTHWEST CORNER DOES NOT APPEAR TO BE IN PLACE. WE USED THE SOUTH FORK MEADOWS NO. 1 SUBDIVISION PLAT (ENTRY #1645710, WEBER COUNTY RECORDER'S OFFICE; "SOUTH FORK") TO LOCATE ADDITIONAL MONUMENTS ALONG 6000 SOUTH STREET. BOTH PLATS SHOW MEASUREMENTS ALONG THE WEST SECTION LINE OF SECTION 22, SO WE ROTATED THE SOUTH FORK PLAT FOUR SECONDS (4") TO THE SAME BASIS AS THE HOMESTEAD PLAT. THE BASIS OF BEARING WAS ESTABLISHED BETWEEN THE SECTION CORNER MONUMENT AND THE STREET MONUMENT IN 6000 SOUTH STREET, AS SHOWN.

WE WERE UNABLE TO FIND ANY SURVEY MARKERS FOR LOT CORNERS WITHIN THE HOMESTEAD SUBDIVISION. HOWEVER, THE SIDEWALKS APPEAR TO FOLLOW OUR SOLUTION VERY WELL. CALCULATED CORNER POINTS FALL NEAR THE CENTER OF WALKWAYS WITHIN THE SUBDIVISION, AND THE SIDEWALK ALONG 3500 WEST STREET PARALLELS THE CALCULATED SECTION LINE BEARING. WE SET MAG NAILS IN THE CONCRETE AND ASPHALT, AS SHOWN, TO MARK THE BOUNDARIES OF THIS LOT.

**DESCRIPTION**

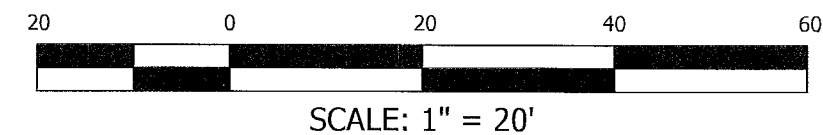
ALL OF LOT 4, HOMESTEAD ROY PAVILION SUBDIVISION, A PART OF THE SOUTHWEST QUARTER SECTION 22, TOWNSHIP 5 NORTH, RANGE 2 WEST, SALT LAKE BASE & MERIDIAN, WEBER COUNTY, UTAH.

CONTAINS 0.791 ACRES

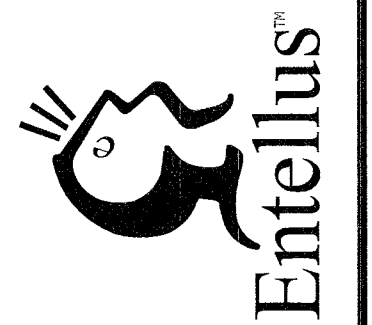


LEGEND	
PROPERTY LINE	—————
ADJACENT PROPERTY	—————
SECTION LINE	- - - - -
TIE TO MONUMENT	—————
PARKING STRIPING	—————
EDGE OF PAVEMENT	—————
CURB, GUTTER, SIDEWALK	—————
RECORD CALLS ( )	
SET 5/8" REBAR WITH "ENTELLUS" CAP, AT CORNER (UNLESS OTHERWISE NOTED)	●
FOUND PROPERTY MARKER (AS NOTED)	○

RECEIVED  
JUL 13 2021  
BY: 6908



1470 South 600 West  
Woods Cross, UT 84010  
Phone 801.298.2236  
www.Entellus.com



WRIGHT DEVELOPMENT

6000 SOUTH 3500 WEST STREET  
LOT 4, HOMESTEAD ROY PAVILION SUBDIVISION  
LOCATED IN THE SOUTHWEST 1/4 OF SECTION 22, T.5N., R.2W., S.L.B.&M.  
ROY CITY, WEBER COUNTY, UTAH

DRAWN: JAF 04/05/2021  
APPROVED: JRC 04/12/2021  
PROJECT #: 1037019  
TOPO BOUNDARY 1037019.dwg

V201  
BOUNDARY SURVEY