

DRAWING NUMBER
000691

PLAN HOLD CORPORATION • IRVINE, CALIFORNIA
REORDER BY NUMBER 075AR

DRAWING NUMBER
000691

PLAN HOLD CORPORATION • IRVINE, CALIFORNIA
REORDER BY NUMBER 075AR

DRAWING NUMBER
000691

PLAN HOLD CORPORATION • IRVINE, CALIFORNIA
REORDER BY NUMBER 075AR

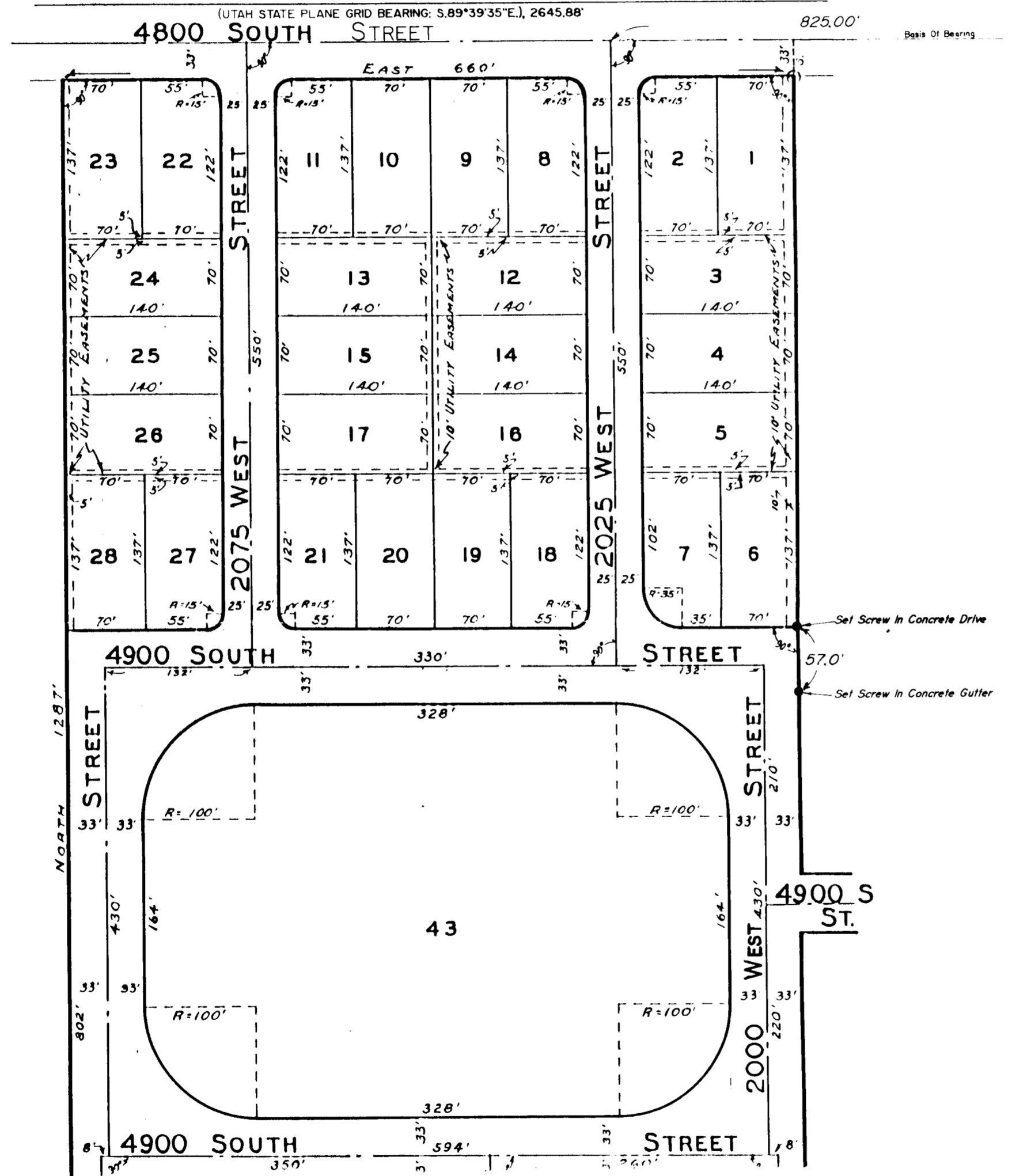
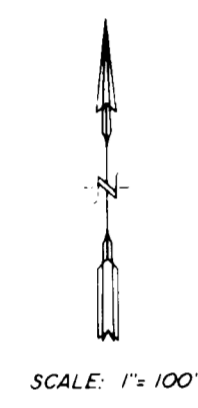
DRAWING NUMBER
000691

PLAN HOLD CORPORATION • IRVINE, CALIFORNIA
REORDER BY NUMBER 075AR

PART OF LAKEVIEW WARD SUBDIVISION

North 1/4 Corner Of Section 14,
T-5-N, R-2-W, S-L.B. & M.
Weber County Monument

Northeast Corner Of Section 14,
T-5-N, R-2-W, S-L.B. & M.
Weber County Monument



NARRATIVE OF SURVEY
THE PURPOSE OF THIS SURVEY WAS TO MARK THE LINE OF 2000 WEST STREET AS SHOWN, FOR ROY CITY TO BE ABLE TO PROPERLY EXERCISE FULL USE OF DEDICATED RIGHTS OF WAY. THE POINTS WERE SET IN ACCORDANCE WITH THE ORIGINAL PLAT OF RECORD OF LAKEVIEW WARD SUBDIVISION TO ROY CITY. NO PROBLEMS WERE ENCOUNTERED.

I, MARTIN E. MOORE JR., UTAH REGISTERED LAND SURVEYOR NO. 3964 DO HEREBY CERTIFY THAT THIS PLAT WAS PREPARED FROM THE OFFICIAL PLAT OF RECORD OF LAKEVIEW WARD SUBDIVISION. AT THE REQUEST OF ROY CITY AND IN BEHALF OF MOUNTAIN WEST PROFESSIONAL LAND SURVEYORS P.C., AND NO CHANGES HAVE BEEN MADE IN ORIGINAL LINES OF SAID SUBDIVISION.

[Signature]
MARTIN E. MOORE JR., P.L.S.



RECEIVED
MAR 16 1992
Weber County Surveyor

RECORD OF SURVEY
for
ROY CITY CORPORATION
4900 S. / 2000 W.

Located In The Northeast One-Quarter Of Section 14,
Township 5 North, Range 2 West, S.L.B. & M.

Date	2/20/92	No.	92-1031	Drawn	RLW	ckd	MBM
------	---------	-----	---------	-------	-----	-----	-----

MOUNTAINWEST PROFESSIONAL LAND SURVEYORS, P.C.
1825 W. 4400 S. P.O. Box 207
Roy, Utah 84067
Phone (801) 751-5330 Fax (801) 751-5331

000691