

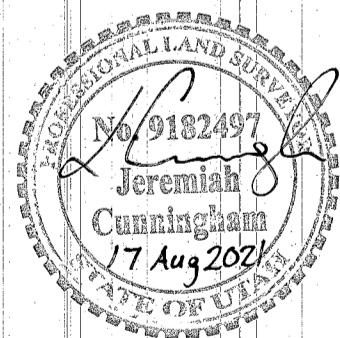
23 24
26 25
NORTHWEST CORNER, SECTION 25, T.5N., R.1W., S.L.B.&M.
FOUND BRASS CAP MONUMENT WITH "X".

501°06'28"E 5201.34' MON. TO MON. (CALC.)
4611.03'

26 25
35 36
SOUTHWEST CORNER, SECTION 25, T.5N., R.1W., S.L.B.&M.
(CALCULATED POSITION DETERMINED FROM INFORMATION FROM THE DAVIS COUNTY SURVEYOR-SEE NARRATIVE)

CERTIFICATE

I, JEREMIAH R. CUNNINGHAM, A PROFESSIONAL LAND SURVEYOR ACCORDING TO THE LAWS OF THE STATE OF UTAH, DO CERTIFY THAT I HAVE SURVEYED THE PARCEL OF GROUND SHOWN HEREON ACCORDING TO UTAH STATE CODE 17-23-17.



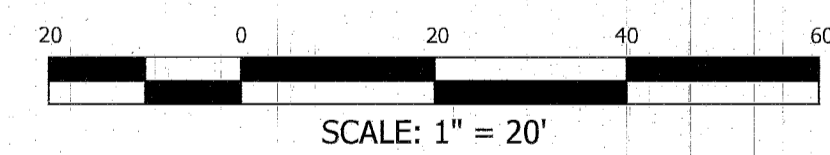
NARRATIVE

THE PURPOSE OF THE SURVEY WAS TO MARK THE PROPERTY CORNERS AND SET LINE POINTS. THE BASIS OF BEARING WAS ESTABLISHED BETWEEN EXISTING SURVEY MARKERS THAT MATCH THE RECORD LOCATION OF THE LOT, AS SHOWN. WE ALSO SET MARKERS ALONG THE NORTHWEST AND NORTHEAST LINES OF THE PARCEL, AS SHOWN. RECORD BEARINGS & DISTANCES WERE TAKEN FROM THE DEDICATION PLAT FOR SPRING CREEK ESTATES SUBDIVISION NO.3 (ENTRY #1098200, WEBER COUNTY RECORDER).

TO RETRACE THIS SUBDIVISION, WE ALSO ATTEMPTED TO TIE INTO THE SECTION LINE SHOWN ON SAID PLAT. THE NORTHWEST SECTION CORNER WAS FOUND, AS SHOWN. ALTHOUGH THIS SUBDIVISION IS FOUND WITHIN WEBER COUNTY, THE SECTION LINE BEARINGS ON THE PLAT, DO NOT APPEAR TO MATCH THE WEBER COUNTY SURVEYOR'S RECORDS. THE SOUTHWEST CORNER OF THE SECTION IS WITHIN DAVIS COUNTY, NOT WEBER COUNTY. THIS SECTION CORNER IS NOT IN PLACE, NOR ARE THERE RECORD TIES FROM THE SOUTHWEST CORNER TO THE NORTHWEST CORNER IN EITHER COUNTY. WE WERE ABLE TO CALCULATE A POSITION BASED ON PRIOR OBSERVATIONS ON THIS SECTION CORNER, PROVIDED BY THE DAVIS COUNTY SURVEYOR. A CALCULATED TIE TO THESE SECTION MONUMENTS IS SHOWN HEREON FOR CONVENIENCE.

DESCRIPTION

LOT 12, SPRING CREEK ESTATES SUBDIVISION NO. 3, BEING PART OF THE NORTHWEST 1/4 OF SECTION 25, TOWNSHIP 5 NORTH, RANGE 1 WEST, SALT LAKE BASE & MERIDIAN, U.S. SURVEY, WEBER COUNTY, UTAH.
CONTAINS 1.000 ACRES



LEGEND	
PROPERTY LINE	—————
ADJACENT PROPERTY	-----
ROAD CENTERLINE	- - - - -
SECTION LINE	-----
TIE TO MONUMENT	-----
EASEMENT LINE	-----
RECORD CALLS ()	
SET 5/8" REBAR WITH H&A ENTELLUS CAP, LS #166385, AT CORNER (UNLESS OTHERWISE NOTED)	●
FOUND PROPERTY MARKER (AS NOTED)	○

LOT 11
SPRING CREEK ESTATES SUBDIVISION NO. 3

383.92'
S88° 53' 32"W

SET HUB & LATHE ON PROP. LINE, 165.0' NORTHEASTERLY OF LOT CORNER.

SET HUB & LATHE ON PROP. LINE, 75.0' SOUTHEASTERLY OF LOT CORNER.

SET HUB & LATHE ON PROP. LINE, 104.0' NORTHEASTERLY OF LOT CORNER.

SET HUB & LATHE ON PROP. LINE, 157.0' SOUTHEASTERLY OF LOT CORNER.

SET HUB & LATHE ON PROP. LINE, 41.5' NORTHEASTERLY OF LOT CORNER.

FOUND REBAR WITH CAP AT CORNER—GREAT BASIN ENG.

FOUND NAIL IN ASPHALT, ON PROP. LINE.

FOUND NAIL IN ASPHALT, ON PROP. LINE.

FOUND REBAR WITH CAP AT CORNER—GREAT BASIN ENG.

LOT 13
SPRING CREEK ESTATES SUBDIVISION NO. 3

LOT 12
SPRING CREEK ESTATES SUBDIVISION NO. 3

LOT 10
SPRING CREEK ESTATES SUBDIVISION NO. 3

LOT 16
SPRING CREEK ESTATES SUBDIVISION NO. 3

CARRIAGE LANE

LOT 15
SPRING CREEK ESTATES SUBDIVISION NO. 3

RECEIVED
AUG 24 2021
BY: 6942

181 North 200 West, Suite #4
Bountiful, UT 84010
Phone 801.298.2236
www.Entellus.com

WILDWOOD BUILDERS
280 EAST CARRIAGE LANE
LOT 12, SPRING CREEK ESTATES SUBDIVISION NO. 3
LOCATED IN THE NORTHWEST 1/4 OF SECTION 25, T5N., R.1W., S.L.B.&M.
WEBER COUNTY, UTAH

DRAWN: JWC 08/15/2018
APPROVED: JRC 08/05/2021
PROJECT: 1701001
BOUNDARY SURVEY
C201
BOUNDARY SURVEY