

09/11/2013

REVISIONS				
NO.	DATE	DESCRIPTION	REV.	CHK. APP.

**MILITARY CONSTRUCTION**  
**Ogden Arsenal, Ogden, Utah**  
**RESERVATION BOUNDARY ALONG**  
**DAVIS-WEBER CANAL**

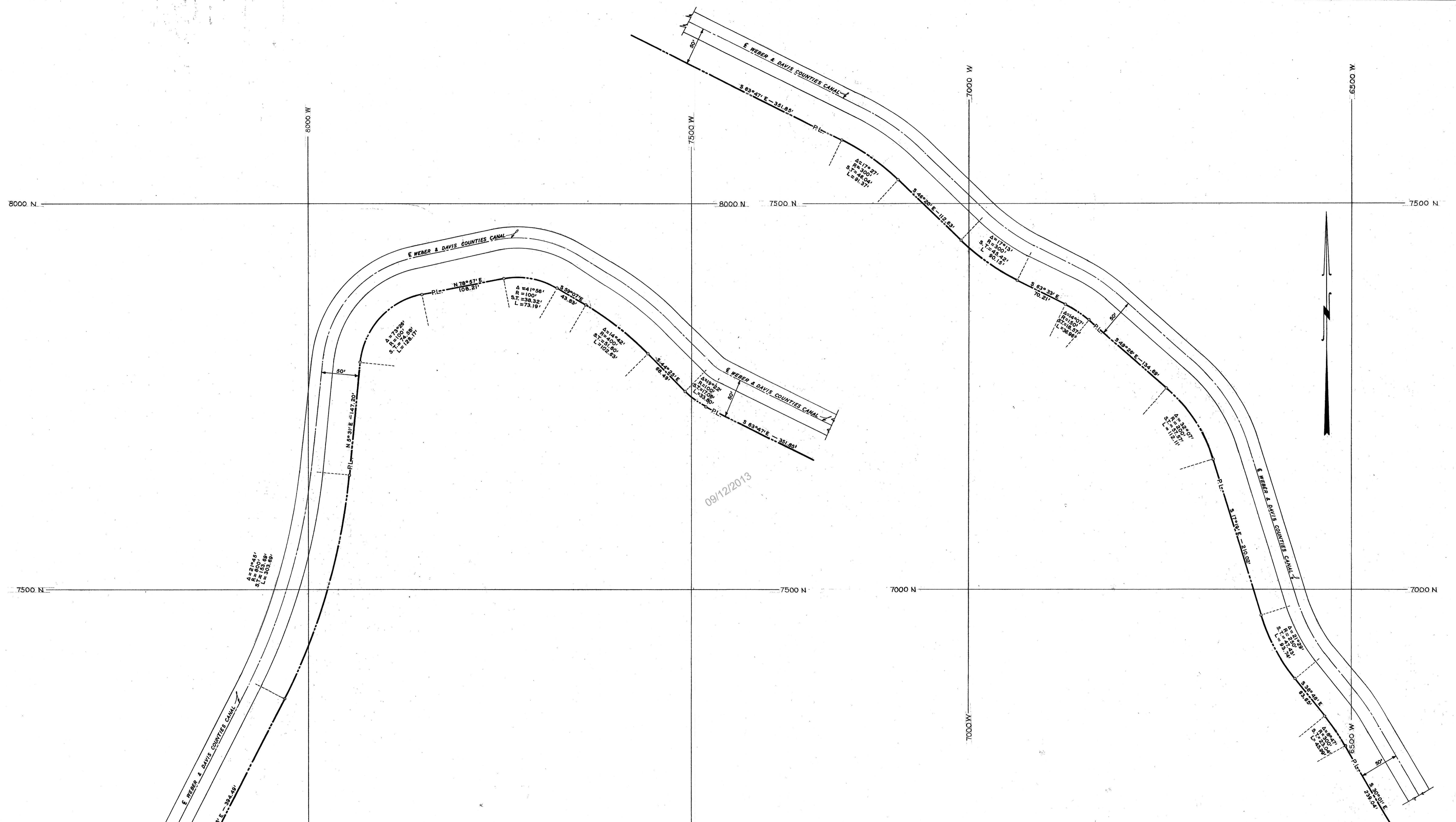
IN 6 SHEETS SCALE: 1"=50' SHEET NO. 1  
 U. S. ENGINEER OFFICE, SACRAMENTO, CALIFORNIA, MAY, 1944

SUBMITTED: *Americus* ENGINEER APPROVAL RECOMMENDED: *R. J. Miller* PRINCIPAL ENGINEER

APPROVED: *W. S. Thompson* MAJOR, CORPS OF ENGINEERS, U.S.A.

DR. B.L.J. TR. G.M.K. CH. H.L.B.  
 DOC. FILE FILE DIV. DRAWING  
 00 0 2

RECEIVED  
 SEPT 08 2021  
 FILE # 6958



REVISIONS					
NO.	DATE	DESCRIPTION	REV.	CK.	APP.

**MILITARY CONSTRUCTION**  
**Ogden Arsenal, Ogden, Utah**  
**RESERVATION BOUNDARY ALONG**  
**DAVIS-WEBER CANAL**

IN 6 SHEETS SCALE 1" = 50' SHEET NO. 2  
 U. S. ENGINEER OFFICE, SACRAMENTO, CALIFORNIA, MAY, 1944

SUBMITTED: *Amoroso* ENGINEER  
 APPROVAL RECOMMENDED: *R.S. Wiley* PRINCIPAL ENGINEER

APPROVED: *W. Thompson* MAJOR, CORPS OF ENGINEERS, U.S.A.

DR. FILE	TR. FILE	CH. FILE	DRAWING
00	0	2	2







