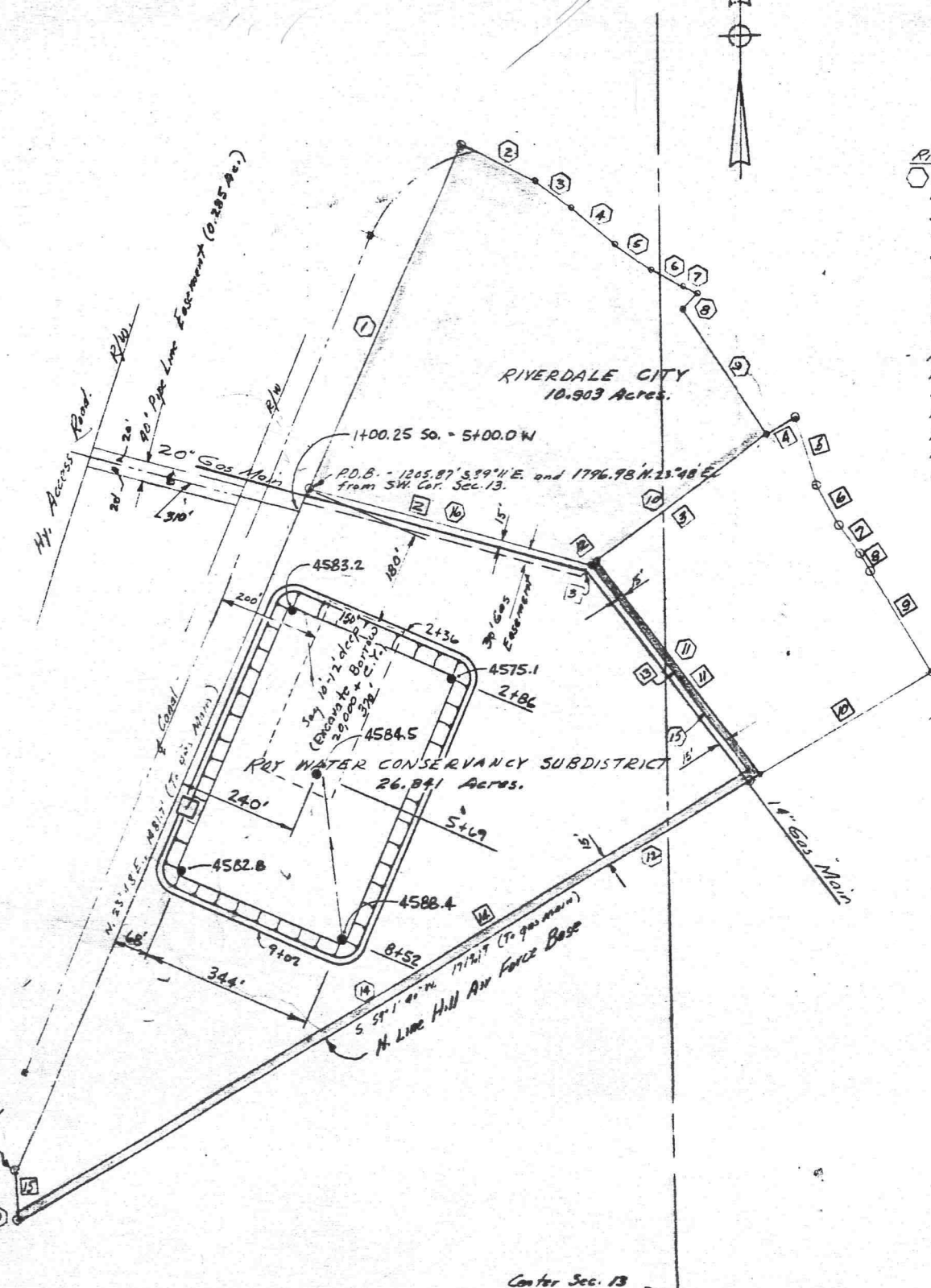


45.75



Riverdale City

- 1. 754.65' N. 23° 48' E.
- 2. 168.12' S. 63° 47' E.
- 3. 91.37' on arc of 300' Rad. curve right - Long Chord = 91.02' S. 55° 3' 30" E.
- 4. 112.63' S. 46° 20' E.
- 5. 90.15' on arc of 300' Rad. curve left - Long Chord = 89.81' S. 54° 56' 30" E.
- 6. 70.21' S. 63° 33' E.
- 7. 36.96' on arc of 150' Rad. curve right - Long Chord = 36.86' S. 56° 29' 30" E.
- 8. 35.16' S. 40° 34' W.
- 9. 295.0' S. 32° 05' 45" E.
- 10. 420.55' S. 53° 12' 41" W.
- 11. 537.49' S. 37° 03' 30" E.
- 12. 1750.28' S. 59° 01' 40" W.
- 13. 17.11' N. 2° 12' 47" W.
- 14. 1727.05' N. 59° 01' 40" E.
- 15. 522.49' N. 37° 03' 30" W.
- 16. 584.27' N. 74° 54' W.

Roy Conservancy Subdistrict

- 1. 1496.51' N. 23° 48' E.
- 2. 584.27' S. 74° 54' E.
- 3. 435.55' N. 53° 12' 41" E.
- 4. 59.24' N. 57° 26' 56" E.
- 5. 141.64' S. 17° 19' E.
- 6. 93.74' on arc of 250' Rad. curve left - Long chord = 93.19' S. 28° 3' 30" E.
- 7. 63.65' S. 30° 48' E.
- 8. 45.99' on arc of 300' Rad. curve right - Long Chord = 45.94' S. 30° 24' 30" E.
- 9. 239.04' S. 30° 01' E.
- 10. 388.28' S. 59° 1' 40" W.
- 11. 537.49' N. 37° 3' 30" W.
- 12. 15.0' S. 53° 12' 41" W.
- 13. 522.49' S. 37° 03' 30" E.
- 14. 1727.05' S. 59° 01' 40" W.
- 15. 87.87' N. 2° 12' 47" W.

APPROX. GRND. ELEV.
 ● TEST HOLE LOCATION (NOTE: DRILL ALL HOLES TO ELEV. 4555.0)

P.O.B. 1245.87' S. 89° 11' E. and
 300.47' N. 23° 48' E. from
 SW Cor. Sec. 13, T.5N, R.2W

N. 2° 12' 47" W.
 104.93

Center Sec. 13

RECEIVED
 SEP 08 2021
 FILE # 6960

TEMPLETON, LINKE & ALSUP
 CONSULTING ENGINEERS
 40 WEST 2950 SOUTH SALT LAKE CITY, UTAH
 REC'D
 G.S.A. PROPERTY -
 HILL AIR FORCE BASE SURPLUS.
 REVISED: 2/29/78