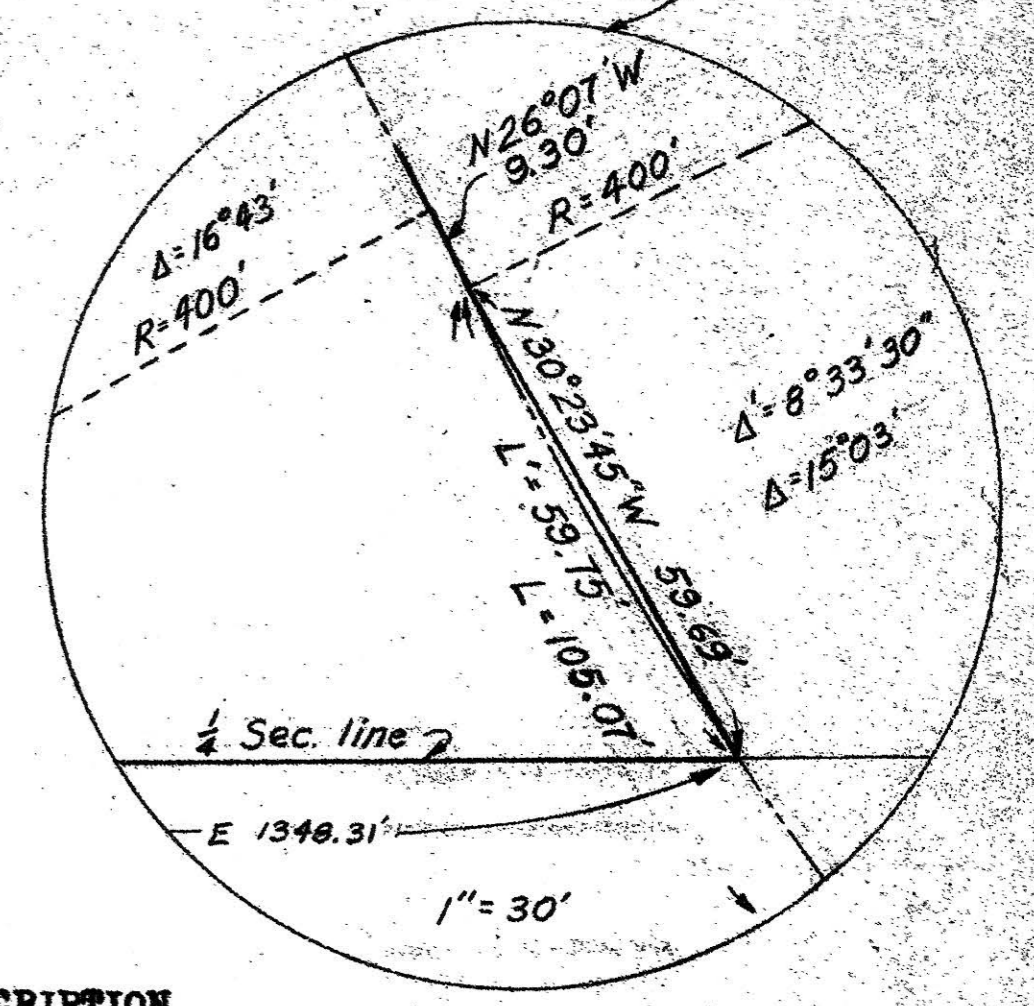
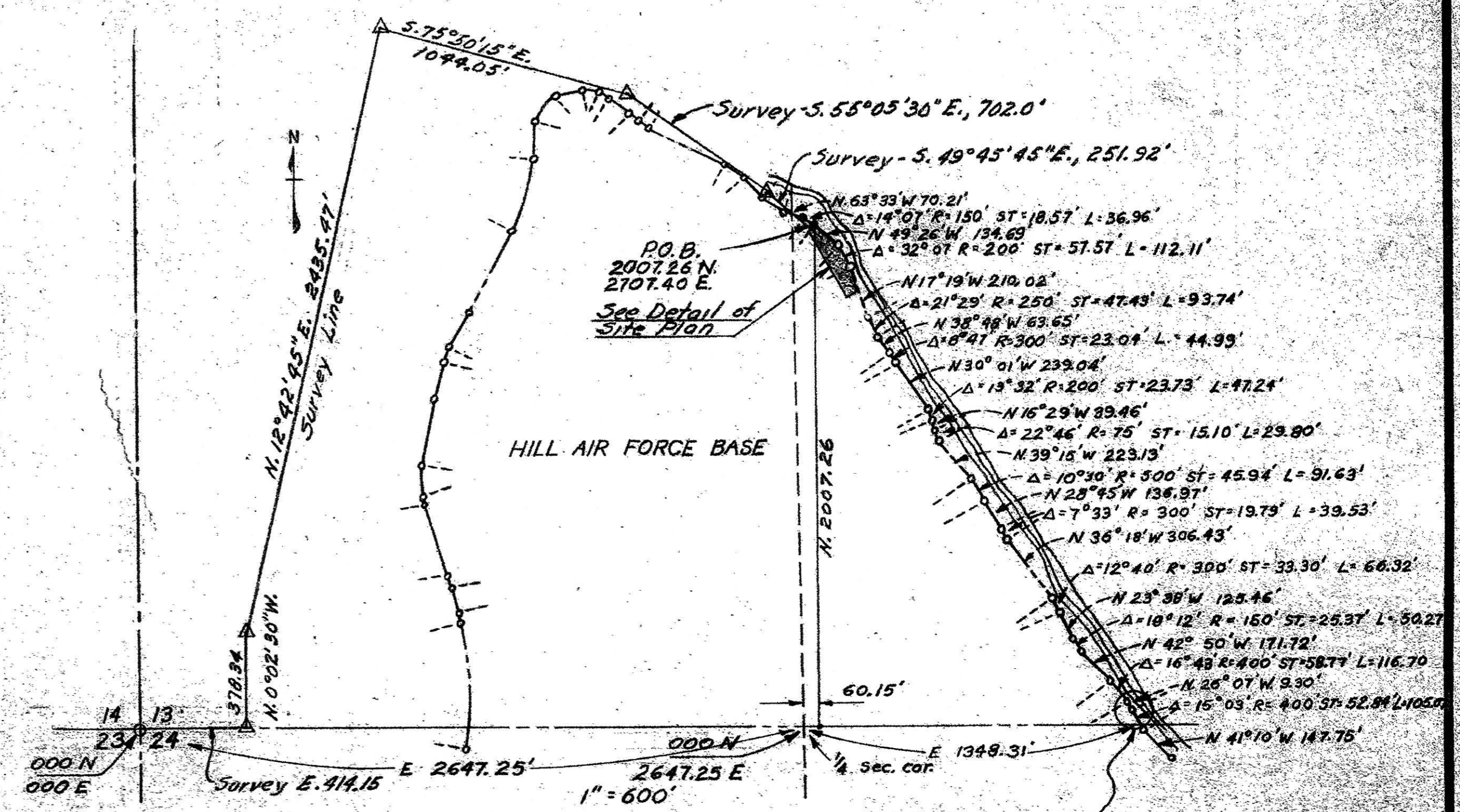
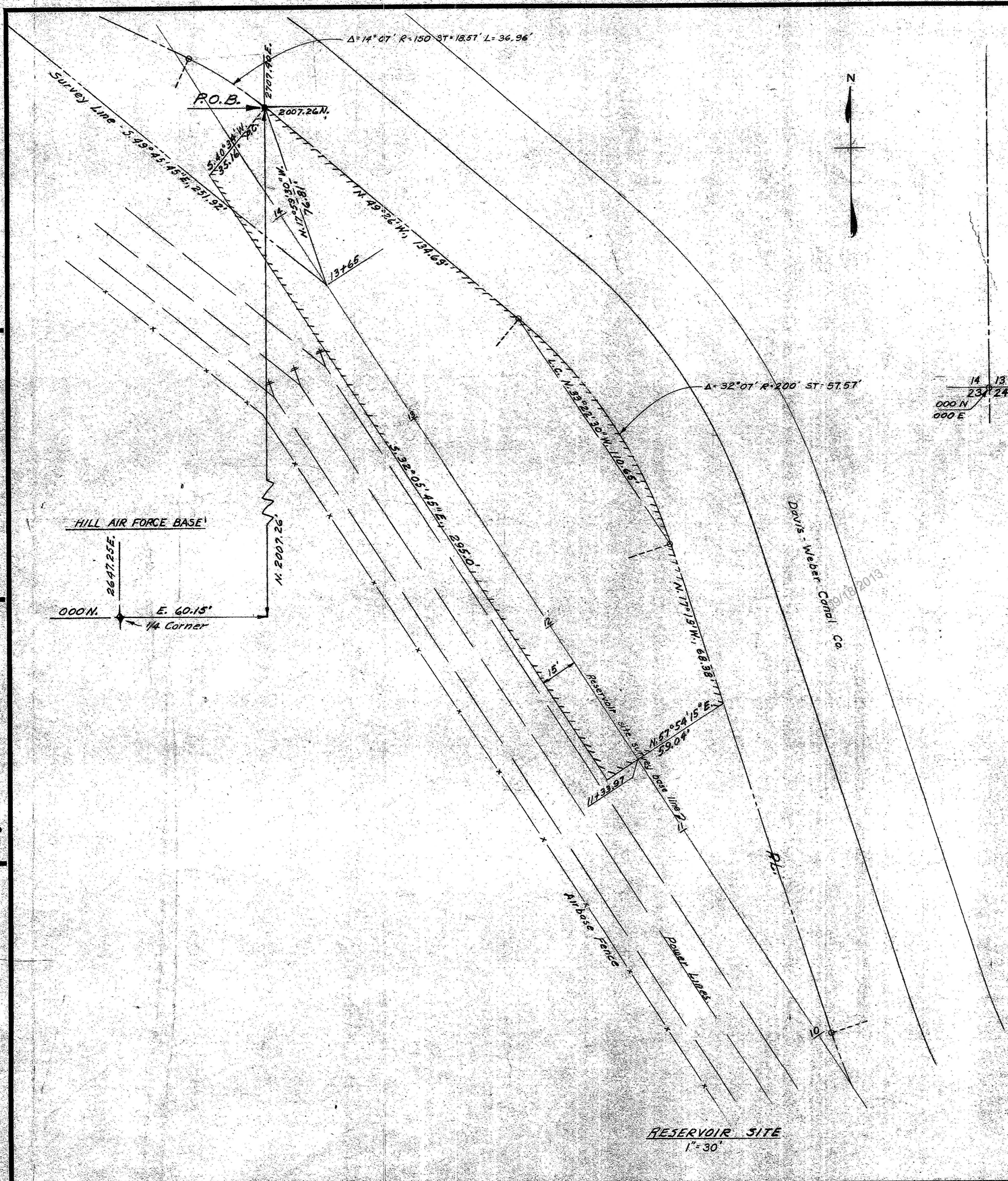


Inspector's book
As constructed
Stake out book

Field book
Topog plotted
Design



DESCRIPTION

Beginning at a point 60.15 feet East and 2007.26 feet North of the South Quarter Corner of Section 13, T. 5 N., R. 2 W., S.L.B. & M., said point being on a certain point of curvature on the U.S. Government Easterly property line, and running S. 40°-34' W., 35.16 feet; thence S. 32°-05' 14.5\"/>

Containing: 0.457 acres, more or less.

CERTIFICATE OF SURVEY

I, Win Templeton, a Registered Engineer and Land Surveyor in the State of Utah do hereby certify that the accompanying plot of the above described tract of land has been correctly drawn to the designated scale and is a true and correct representation of said description and that the same has been surveyed on the ground.

Win Templeton
Registered Professional Engineer and Land Surveyor - License No. 314

Revised 9/27/63 - Description Changed to coincide with Hill Field Boundary.

RECEIVED
SEPT 08 2021
FILE # 6961

TEMPLETON AND LINKE CONSULTING ENGINEERS 211 DOOLY BUILDING SALT LAKE CITY, UTAH		
PROPOSED RESERVOIR SITE RIVERDALE CITY		
DRAWN <i>KRD</i> CHECKED <i>H. D.</i> APPROVED <i>[Signature]</i>	SCALE AS SHOWN DATE SEPT 1963	DWG. NO. 1 FILE NO. 8-1

RESERVOIR SITE
1" = 30'