

DRAWING NUMBER

000698

PLAN HOLD CORPORATION • IRVINE, CALIFORNIA
REORDER BY NUMBER 075AR

DRAWING NUMBER

000698

PLAN HOLD CORPORATION • IRVINE, CALIFORNIA
REORDER BY NUMBER 075AR

DRAWING NUMBER

000698

PLAN HOLD CORPORATION • IRVINE, CALIFORNIA
REORDER BY NUMBER 075AR

DRAWING NUMBER

000698

PLAN HOLD CORPORATION • IRVINE, CALIFORNIA
REORDER BY NUMBER 075AR



SCALE
1" = 50'

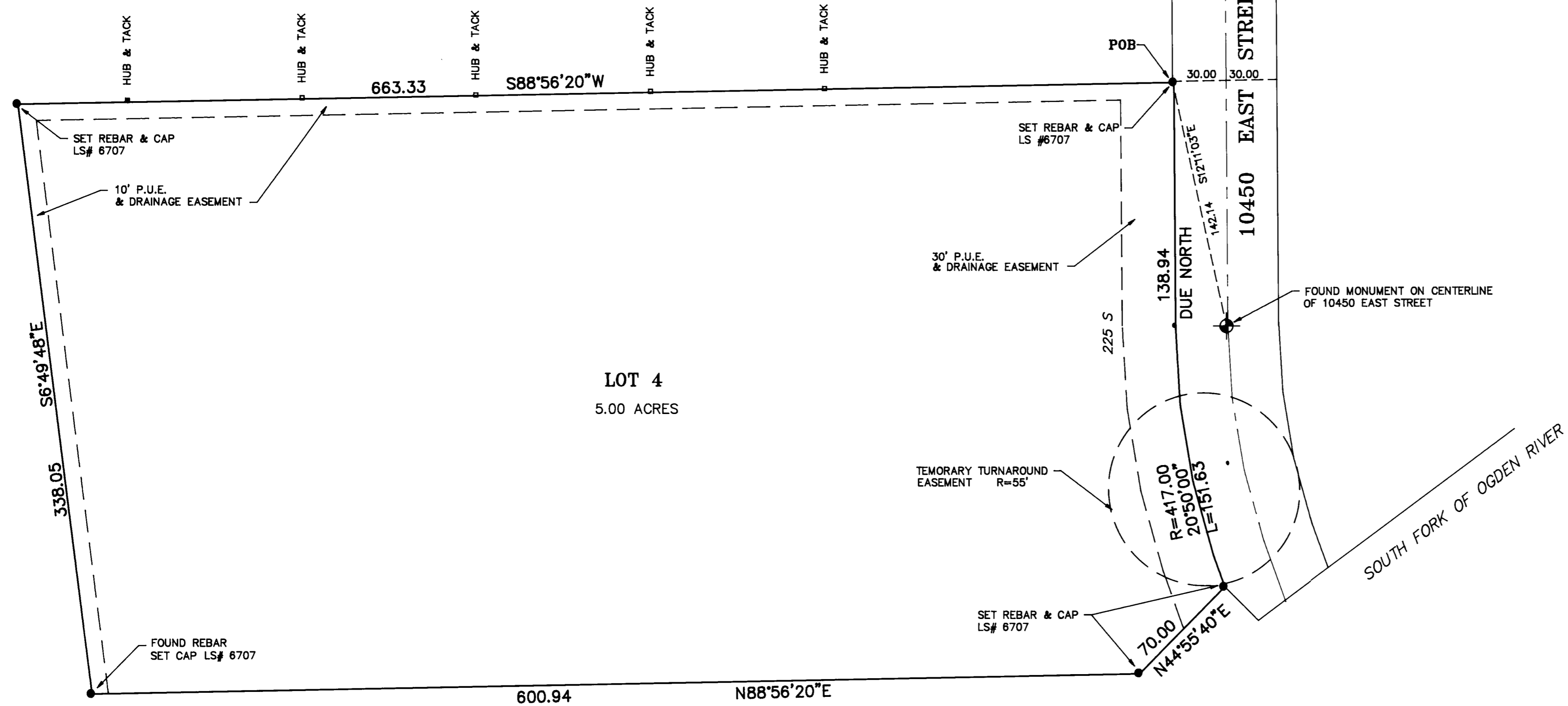
I, VON R. HILL, A REGISTERED LAND SURVEYOR ACCORDING TO THE LAWS OF THE STATE OF UTAH, DO CERTIFY THAT I HAVE SURVEYED LOT 4, HUNTSVILLE HOLLOW SUBDIVISION LOCATED IN THE NW 1/4 OF SECTION 14, T8N, R2E, SLB&M, HUNTSVILLE, WEBER COUNTY, UTAH, AND THAT SAID LOT WAS STAKED ON THE GROUND AS SHOWN ON THE DRAWING.

V. R. Hill

NARRATIVE
THE PURPOSE OF THE SURVEY WAS TO MARK THE PROPERTY LINES AT THE REQUEST OF THE OWNER, THIS WAS DONE USING THE MONUMENTS SHOWN ON THIS DRAWING.



FOUND MONUMENT ON CENTERLINE OF 10450 EAST STREET



RECEIVED
APR 01 1992
Weber County Surveyor

Hill, Jamison and Associates, Inc.
Engineering and Surveying
146 West 300 South, Bountiful, Utah 84010 (801)298-2236

SURVEY REQUESTED BY
LINDA HERBERT
LOT 4, HUNTSVILLE HOLLOW SUBDIVISION LOCATED IN THE NW 1/4 OF SECTION 14, T8N, R2E, SLB&M

DRAWN RHR DATE 3/12/92
APPROVED VRH DATE 3/12/92
REVIEWED

SHEET
OF

FILE NO.
42-120

000698