

DRAWING NUMBER
000700

DRAWING NUMBER
000700

DRAWING NUMBER
000700

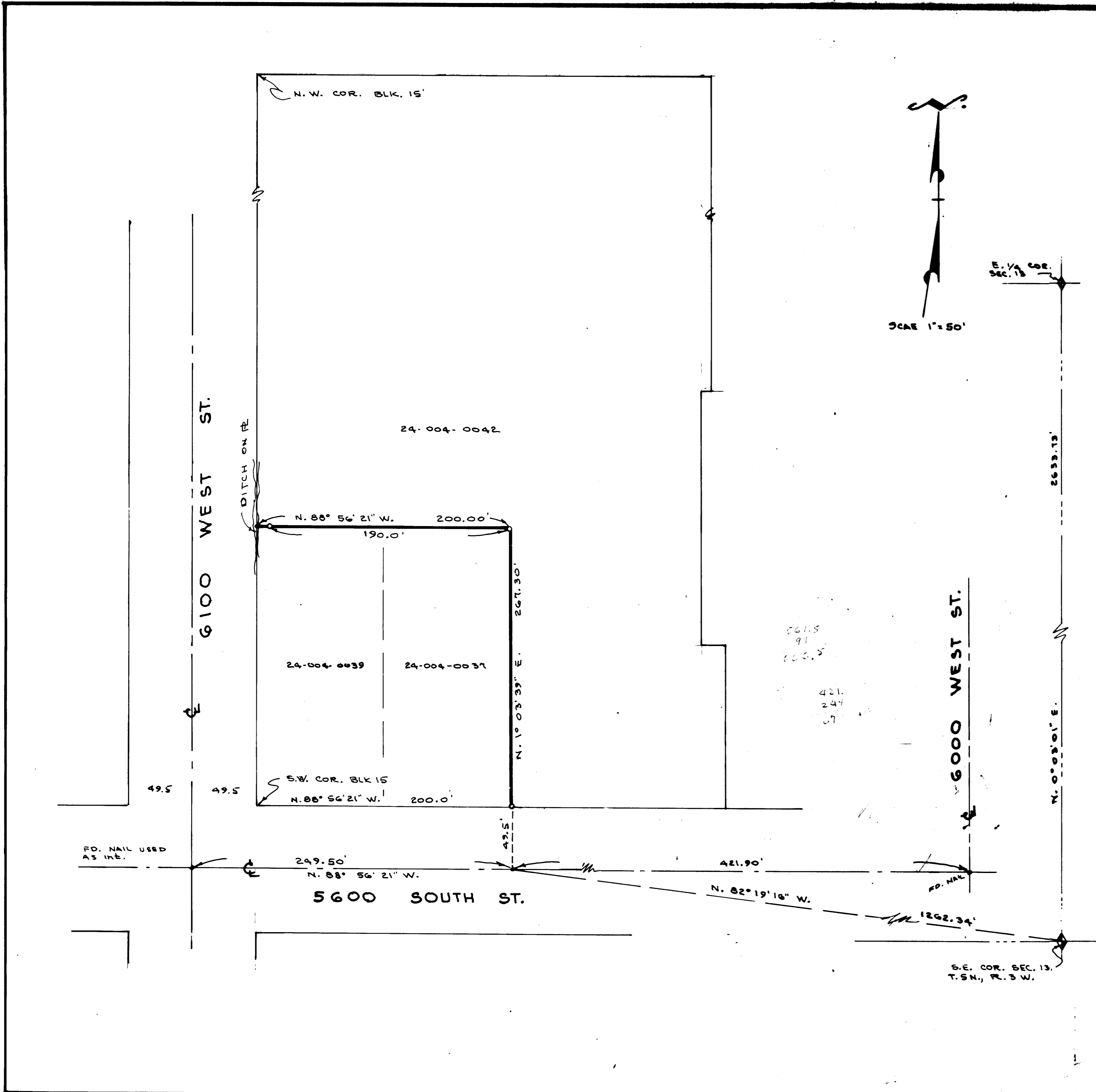
DRAWING NUMBER
000700

PLAN HOLD CORPORATION • IRVINE, CALIFORNIA
REORDER BY NUMBER 075AR
POSITION EDGE OF PRINT ON THIS LINE

PLAN HOLD CORPORATION • IRVINE, CALIFORNIA
REORDER BY NUMBER 075AR
POSITION EDGE OF PRINT ON THIS LINE

PLAN HOLD CORPORATION • IRVINE, CALIFORNIA
REORDER BY NUMBER 075AR
POSITION EDGE OF PRINT ON THIS LINE

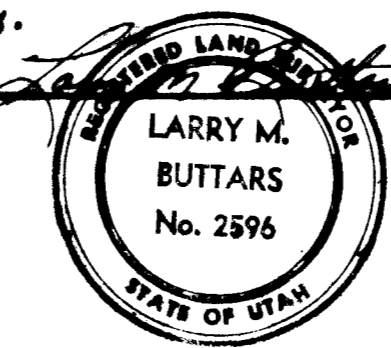
PLAN HOLD CORPORATION • IRVINE, CALIFORNIA
REORDER BY NUMBER 075AR
POSITION EDGE OF PRINT ON THIS LINE



SURVEYORS CERTIFICATE

I, Larry M. Butters, a registered Land Surveyor as prescribed by the laws of the State of Utah, and holding license No. 2596, do hereby certify that I made a survey of the below described property and the Plat hereon is a true and correct representation of said survey.

Date: 7-1-91 Sign: _____



DESCRIPTION

Part of Block 15, PLAT A, Hooper City Survey:
Part of 24-004-0042, as shown.

NARRATIVE

Bearing base: State plane grid using E. line of S.E. 1/4 of Sec. 13 for bearing base. Block has previously been surveyed by others and 4 intersections established. Requested corners set by using desc. 24-004-0037 and 39 because of difference in plat and descriptions.

LEGEND

- o Set 3/4" x 24" re-bar with plastic cap stamped L. Butters R.L.S. 2596
- e Set P.K. nail with ribbon

RECEIVED
APR 08 1992

Weber County Surveyor

BUTTARS SURVEYING
1015 26th STREET OGDEN, UT 84401
PHONE 372-8821

CLIENT: KENNETH HUMMEL, JR.

SURVEY LOCATION:
BLK. 15, PLAT A, HOOPER CITY
S.E. 1/4 SEC. 13, T.5N., R.3W., S.L.84M

4-22-91