

DRAWING NUMBER

000714

PLAN HOLD CORPORATION • IRVINE, CALIFORNIA

DRAWING NUMBER

000714

PLAN HOLD CORPORATION • IRVINE, CALIFORNIA

DRAWING NUMBER

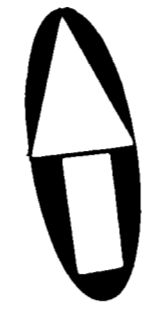
000714

PLAN HOLD CORPORATION • IRVINE, CALIFORNIA

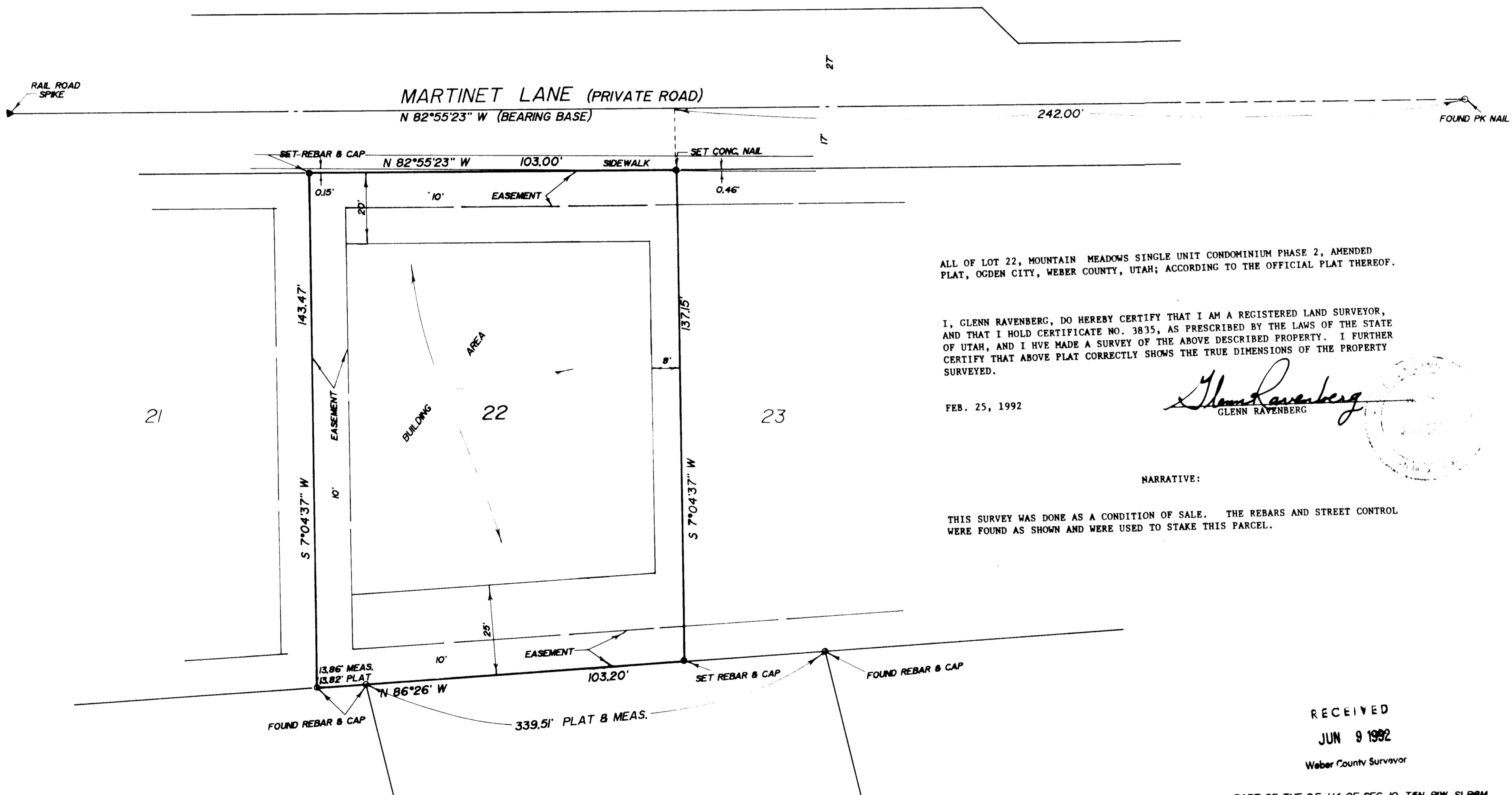
DRAWING NUMBER

000714

PLAN HOLD CORPORATION • IRVINE, CALIFORNIA



SCALE 1" = 20'



ALL OF LOT 22, MOUNTAIN MEADOWS SINGLE UNIT CONDOMINIUM PHASE 2, AMENDED PLAT, OGDEN CITY, WEBER COUNTY, UTAH; ACCORDING TO THE OFFICIAL PLAT THEREOF.

I, GLENN RAVENBERG, DO HEREBY CERTIFY THAT I AM A REGISTERED LAND SURVEYOR, AND THAT I HOLD CERTIFICATE NO. 3835, AS PRESCRIBED BY THE LAWS OF THE STATE OF UTAH, AND I HAVE MADE A SURVEY OF THE ABOVE DESCRIBED PROPERTY. I FURTHER CERTIFY THAT ABOVE PLAT CORRECTLY SHOWS THE TRUE DIMENSIONS OF THE PROPERTY SURVEYED.

Glenn Ravenberg
GLENN RAVENBERG

FEB. 25, 1992

NARRATIVE:

THIS SURVEY WAS DONE AS A CONDITION OF SALE. THE REBARS AND STREET CONTROL WERE FOUND AS SHOWN AND WERE USED TO STAKE THIS PARCEL.

RECEIVED

JUN 9 1992

Weber County Surveyor

PART OF THE SE 1/4 OF SEC. 10, T5N, R1W, S10R6M

INTERMOUNTAIN SURVEYING
Layton, Utah 84041 (801) 544-1170

PROPERTY SURVEY FOR JAY WILSON

ALL OF LOT 22, MOUNTAIN MEADOWS SINGLE UNIT CONDOMINIUM PHASE 2 AMENDED PLAT (OGDEN)

FEB. 25, 1992 1" = 20' PS-92-16

000714