

DRAWING NUMBER
000718

PLAN HOLD CORPORATION • IRVINE, CALIFORNIA
REORDER BY NUMBER 07544

DRAWING NUMBER
000718

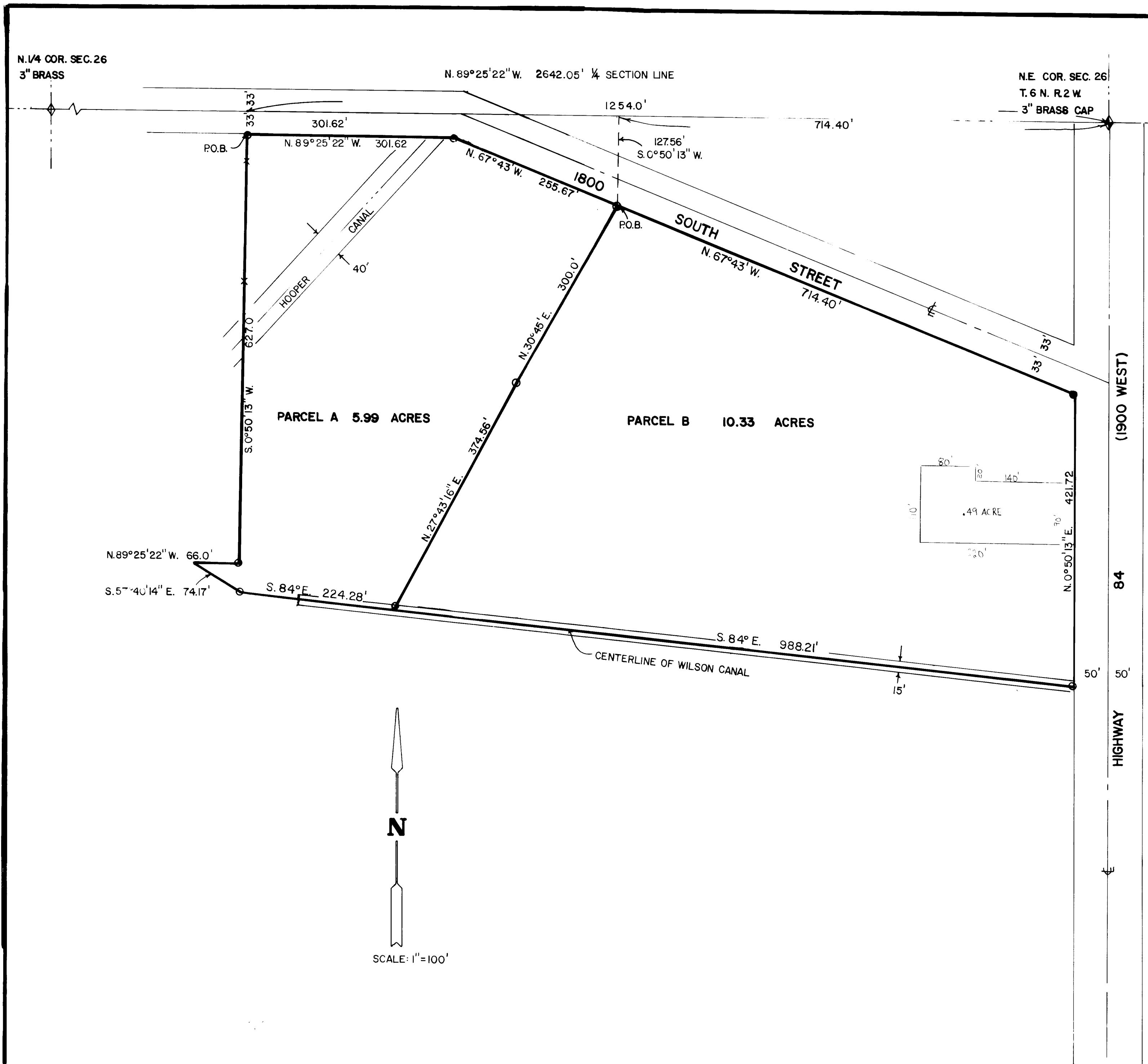
PLAN HOLD CORPORATION • IRVINE, CALIFORNIA
REORDER BY NUMBER 07544

DRAWING NUMBER
000718

PLAN HOLD CORPORATION • IRVINE, CALIFORNIA
REORDER BY NUMBER 07544

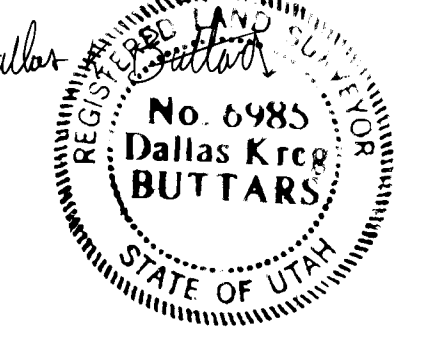
DRAWING NUMBER
000718

PLAN HOLD CORPORATION • IRVINE, CALIFORNIA
REORDER BY NUMBER 07544



I, DALLAS K BUTTARS, A REGISTERED LAND SURVEYOR AS PRESCRIBED BY THE LAWS OF THE STATE OF UTAH, AND HOLDING LICENSE NUMBER 6985, DO HEREBY CERTIFY THAT I MADE A SURVEY OF THE BELOW DESCRIBED PROPERTY AND THE PLAT HEREON IS A TRUE AND CORRECT REPRESENTATION OF SAID SURVEY.

DATE Feb. 24, 1992 SIGN Dallas K Buttars



NARRATIVE

THIS SURVEY WAS MADE TO ESTABLISH THE BOUNDARY AND CREATE 2 PARCELS FROM 1 DESCRIPTION. THE RIGHT OF WAY OF 1800 SOUTH WAS ESTABLISHED FROM EXISTING FENCES. WEBER COUNTY STATE PLANE BEARING SYSTEM USED.

LEGEND

- SET REBAR & CAP
- SET PK NAIL

RECEIVED
MAY 01 1992
Weber County Surveyor

BUTTARS SURVEYING	392-5291
1815 26 TH ST. OGDEN, UT. 84401	771-5949
CLIENT ELDON DRAKE	
SURVEY LOCATION: N.E. QUARTER SEC. 26, T. 6 N. R. 2 W. S.L.M.	
DATE: FEB 08, 1992	

000718