

NORTHWEST CORNER OF SECTION 8, TOWNSHIP 5 NORTH, RANGE 1 WEST, SALT LAKE BASE & MERIDIAN FOUND NAIL.

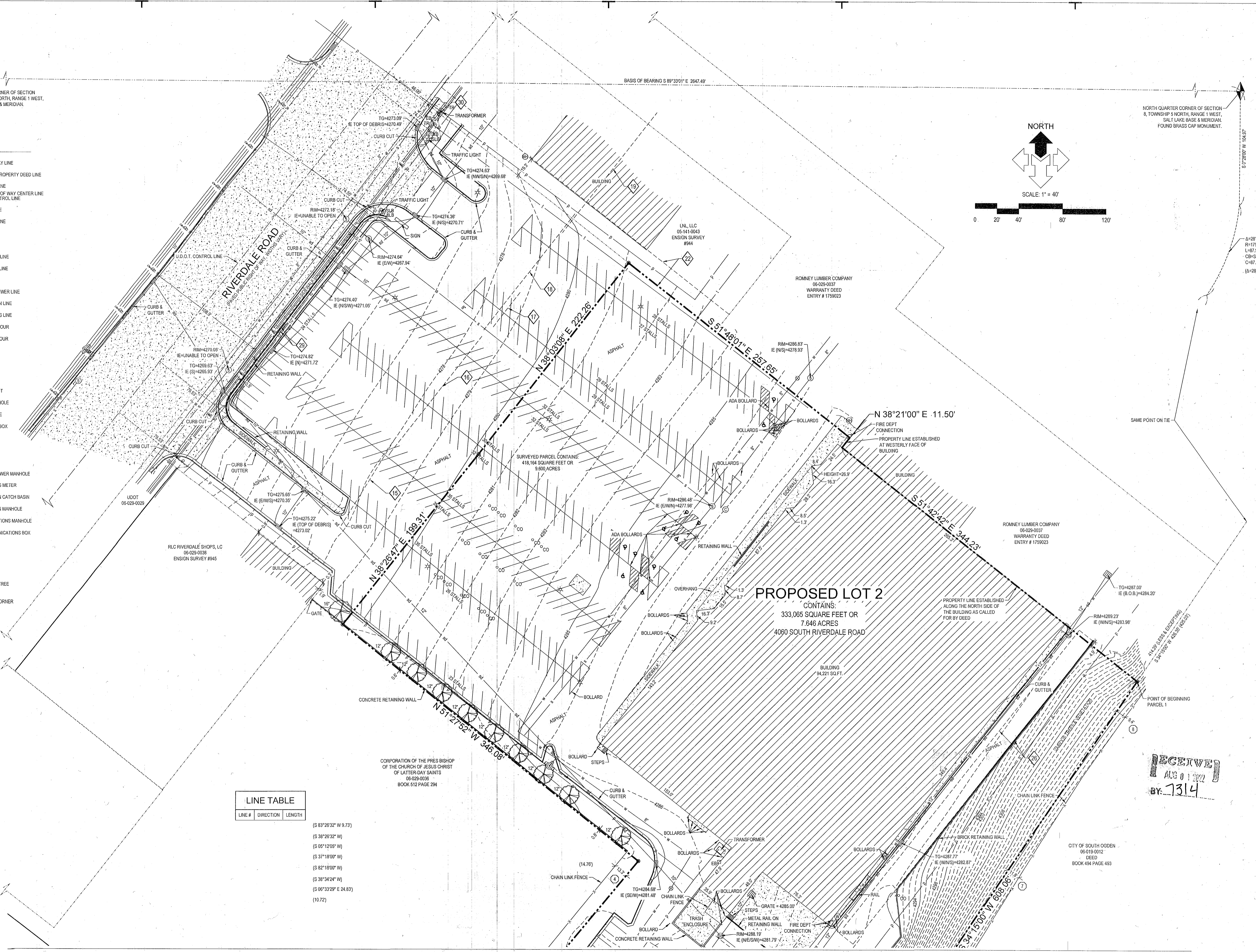
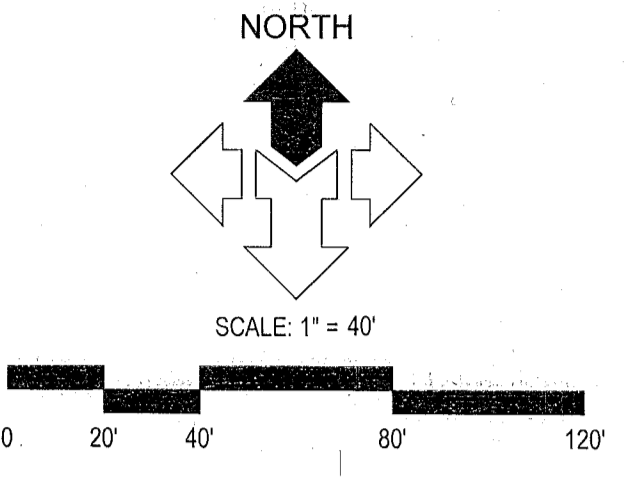
NORTH QUARTER CORNER OF SECTION 8, TOWNSHIP 5 NORTH, RANGE 1 WEST, SALT LAKE BASE & MERIDIAN FOUND BRASS CAP MONUMENT.

LEGEND

- RIGHT OF WAY LINE
- ADJOINING PROPERTY DEED LINE
- - - PROPERTY LINE
- - - ROAD RIGHT OF WAY CENTER LINE
- - - U.D.O.T. CONTROL LINE
- - - SECTION LINE
- - - EASEMENT LINE
- - - FENCE
- - - POWER LINE
- - - FIBER OPTIC LINE
- - - TELEPHONE LINE
- - - WATER LINE
- - - SANITARY SEWER LINE
- - - STORM DRAIN LINE
- - - NATURAL GAS LINE
- - - MAJOR CONTOUR
- - - MINOR CONTOUR
- ▨ CONCRETE
- ▨ BUILDING
- ⊙ FIRE HYDRANT
- ⊙ WATER MANHOLE
- ⊙ WATER VALVE
- ⊙ ELECTRICAL BOX
- ⊙ LIGHT POLE
- ⊙ MANHOLE
- ⊙ CLEAN OUT
- ⊙ SANITARY SEWER MANHOLE
- ⊙ NATURAL GAS METER
- ⊙ STORM DRAIN CATCH BASIN
- ⊙ STORM DRAIN MANHOLE
- ⊙ COMMUNICATIONS MANHOLE
- ⊙ TELECOMMUNICATIONS BOX
- ⊙ SIGNAL BOX
- ⊙ MAILBOX
- ⊙ SIGN
- ⊙ DECIDUOUS TREE
- ⊙ PROPERTY CORNER

LINE TABLE

LINE #	DIRECTION	LENGTH
	(S 83°28'32" W 9.73)	
	(S 39°28'32" W)	
	(S 05°12'05" W)	
	(S 37°18'00" W)	
	(S 82°18'00" W)	
	(S 38°34'24" W)	
	(S 06°33'29" E 24.83)	
	(10.72)	



SEE PAGE 2 OF 2

MCNEIL ENGINEERING
 Economic and Sustainable Designs, Professionals You Know and Trust
 8610 South Sandy Parkway, Suite 200 Sandy, Utah 84070 801.255.7700 mcnengineering.com
 Civil Engineering • Consulting & Landscape Architecture
 Structural Engineering • Land Surveying & HDS

THE CHURCH OF JESUS CHRIST OF LATTER DAY SAINTS
4060 SOUTH RIVERDALE ROAD
RIVERDALE, UTAH
 LOCATED IN THE NORTHWEST 1/4 OF SECTION 8, TOWNSHIP 5 NORTH, RANGE 1 WEST, S.L.B. & M.

REVISIONS

REV	DATE	DESCRIPTION

PROJECT NO: 21563
 CAD FILE: 21563ALT REV
 DRAWN BY: KSL/KEG
 CALC BY: DBD
 FIELD CREW: HD/SS
 CHECKED BY: DBD
 DATE: 3-16-22

ALTA/NSPS
LAND TITLE
SURVEY
1 OF 2

RECEIVED
 AUG 01 2022
 BY: 1314

