

DRAWING NUMBER
000074

PLAN HOLD CORPORATION • IRVINE, CALIFORNIA

DRAWING NUMBER
000074

PLAN HOLD CORPORATION • IRVINE, CALIFORNIA

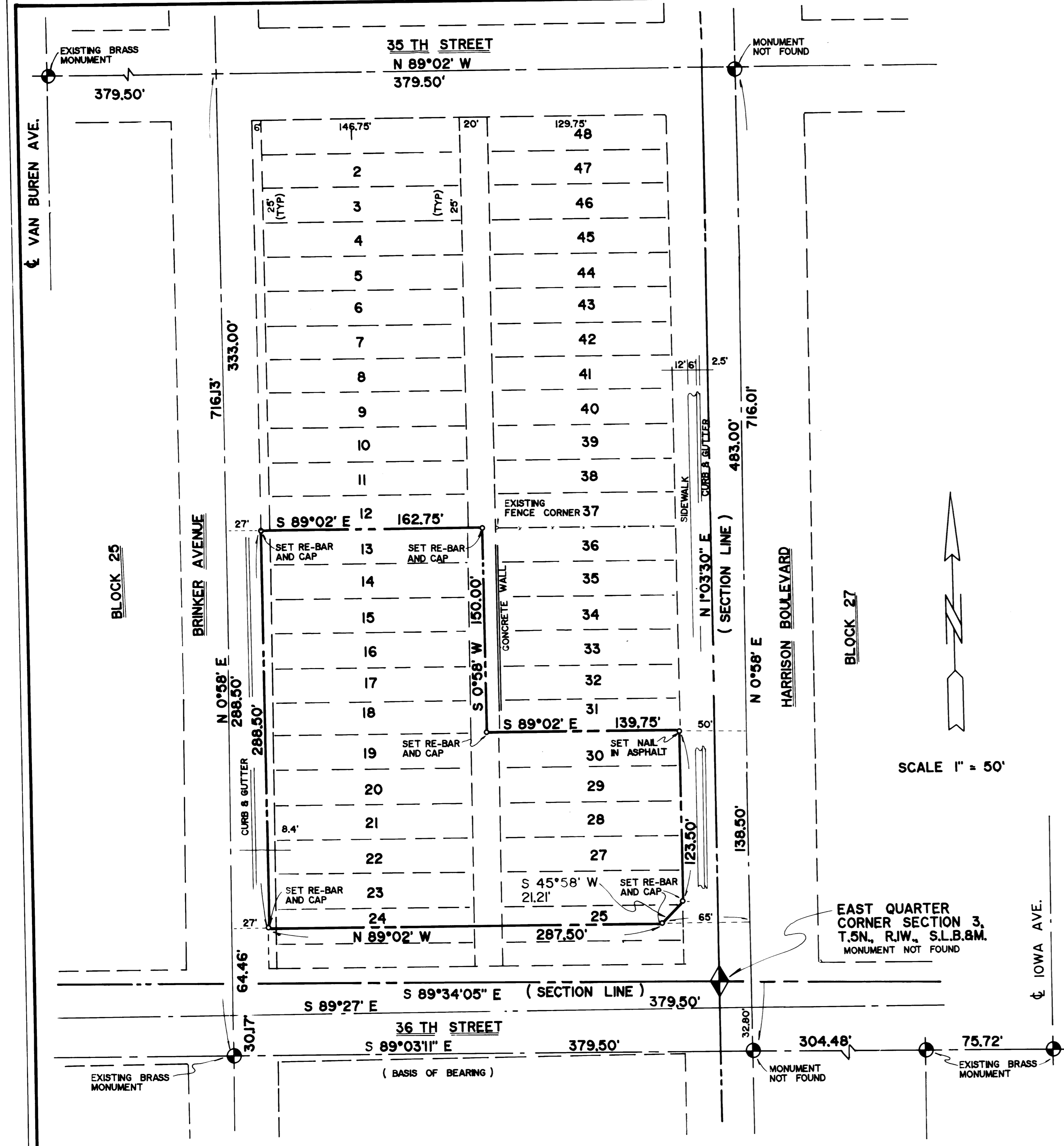
DRAWING NUMBER
000074

PLAN HOLD CORPORATION • IRVINE, CALIFORNIA

DRAWING NUMBER
000074

PLAN HOLD CORPORATION • IRVINE, CALIFORNIA

MONSEN ENGINEERING, L.L.C. 109101



LOCATION

BEING A PART OF THE NORTHEAST QUARTER OF SECTION 3, T.5N., R.1W., S.L.B.8.M. IN OGDEN CITY, WEBER COUNTY, UTAH.

BOUNDARY DESCRIPTION

PARCEL 1: ALL OF LOTS 13 TO 23 AND THE NORTH 13.5 FT. OF LOT 24, BLOCK 26, NELSON PARK ADDITION, TO OGDEN CITY, WEBER COUNTY, UTAH. ALSO THE WEST 1/2 OF THE VACATED ALLEY ADJOINING SAID LOTS ON THE EAST. ALSO THE VACATED EAST SIX FEET OF BRINKER AVENUE ADJOINING SAID LOTS ON THE WEST.

PARCEL 2: PART OF LOTS 25 TO 28, INCLUSIVE, BLOCK 26, NELSON PARK ADDITION, TO OGDEN CITY, WEBER COUNTY, UTAH, AND PART OF THE VACATED ALLEY ADJOINING SAID LOTS DESCRIBED AS FOLLOWS: BEGINNING AT THE NORTHEAST CORNER OF LOT 28 RUNNING THENCE N89°02'W 139.7 FT.; THENCE S0°58'E 88.5 FT.; THENCE S89°02'E 124.7 FT.; THENCE N45°58'E 212.1 FT.; THENCE N0°58'E 73.50 FT. TO THE POINT OF BEGINNING.

PARCEL 3: ALL OF LOTS 29 & 30, BLOCK 26, NELSON PARK ADDITION, OGDEN CITY, WEBER COUNTY, UTAH, AND THE EAST 1/2 OF THE VACATED ALLEY ADJOINING SAID LOTS ON THE WEST.

CONTAINING: 15196 ACRES

NARRATIVE

PURPOSE OF SURVEY
TO LOCATE PROPERTY CORNERS FOR OWNERS.

BASIS OF ESTABLISHMENT
WE MEASURED 333.00 FT. SOUTH OF THE CENTERLINE INTERSECTION OF BRINKER AVENUE AND 35TH STREET AND CHECKED OUR BEARINGS ON THE TWO MONUMENTS ON 36TH STREET FROM THIS POINT ALL THE CORNERS WERE RADIALLY ESTABLISHED.

FOUND MONUMENTS
EXISTING MONUMENTS INCLUDE THE THREE BRASS MONUMENTS SHOWN ON 36TH STREET AND THE BRASS MONUMENT AT THE INTERSECTION OF VAN BUREN AVENUE AND 35TH STREET.

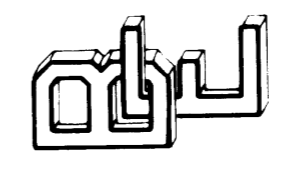
SURVEYOR'S CERTIFICATE

I, J. SCOTT BALLING, DO HEREBY CERTIFY THAT I AM A REGISTERED LAND SURVEYOR HOLDING CERTIFICATE NO. 5875 AS PRESCRIBED UNDER THE LAWS OF THE STATE OF UTAH AND THAT I HAVE MADE A SURVEY OF THE TRACT OF LAND SHOWN AND DESCRIBED HEREON AND THAT THIS SURVEY IS CORRECT.

J. Scott Balling
LAND SURVEYOR NO. 5875
Feb 19, 1987
DATE

RECEIVED
FEB 04 1988
Weber County Surveyor

BALLING ENGINEERING
SMOOT OFFICE BLDG., SUITE 20
200 WEST 400 NORTH
CENTERVILLE, UTAH 84014
PHONE: 295-7237



SURVEY FOR:
SKY PROPERTIES
667 EAST FIRST SOUTH
SALT LAKE CITY, UTAH 84102

SURVEYED BY: *SB*
DATE SURVEYED: *12-7-87*
DRAFTING BY: *RB*
CHECKED BY: *SB*
FILE NUMBER: *1030*

000074