

DRAWING NUMBER

000740

DRAWING NUMBER

000740

DRAWING NUMBER

000740

DRAWING NUMBER

000740

PLAN HOLD CORPORATION • IRVINE, CALIFORNIA

PLAN HOLD CORPORATION • IRVINE, CALIFORNIA

PLAN HOLD CORPORATION • IRVINE, CALIFORNIA

PLAN HOLD CORPORATION • IRVINE, CALIFORNIA

REORDER BY NUMBER 07548

REORDER BY NUMBER 07548

REORDER BY NUMBER 07548

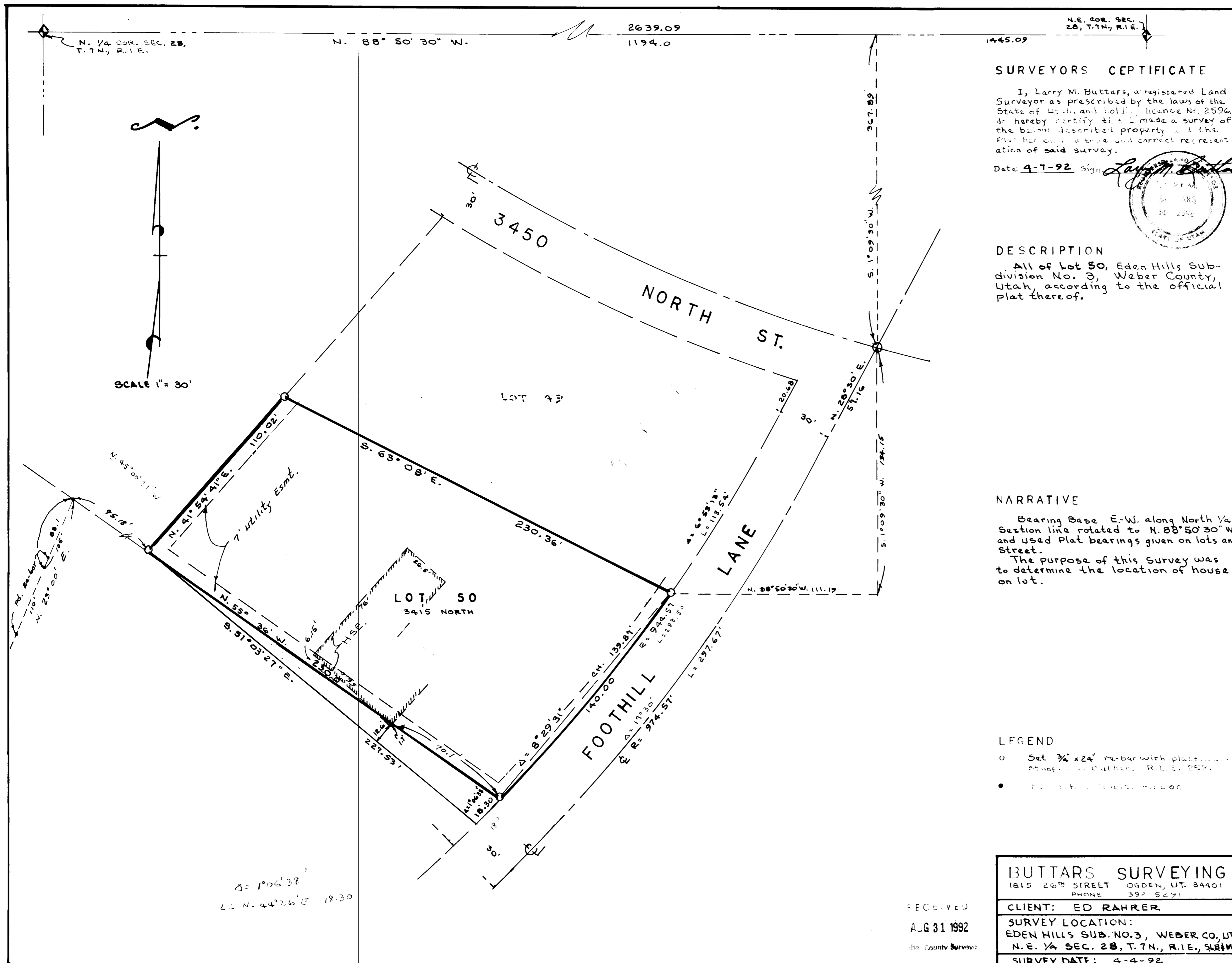
REORDER BY NUMBER 07548

POSITION EDGE OF PRINT ON THIS LINE

POSITION EDGE OF PRINT ON THIS LINE

POSITION EDGE OF PRINT ON THIS LINE

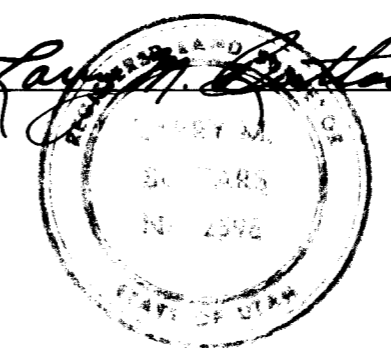
POSITION EDGE OF PRINT ON THIS LINE



SURVEYORS CERTIFICATE

I, Larry M. Butters, a registered Land Surveyor as prescribed by the laws of the State of Utah, and holding License No. 2596, do hereby certify that I made a survey of the herein described property and the Plat hereon is a true and correct representation of said survey.

Date 4-7-92 Sign: *Larry M. Butters*



DESCRIPTION

All of Lot 50, Eden Hills Sub-division No. 3, Weber County, Utah, according to the official plat thereof.

NARRATIVE

Bearing Base E-W. along North 1/4 Section line rotated to N. 88° 50' 30" W. and used Plat bearings given on lots and Street.
The purpose of this Survey was to determine the location of house on lot.

LEGEND

- Set 3/4" x 24" re-bar with plastic cap stamped with Butters, R.L.S. 2596.
- Surveyor's mark with nail on

BUTTERS SURVEYING
1815 26th STREET OGDEN, UT. 84401
PHONE 392-5291

CLIENT: ED RAHRER

SURVEY LOCATION:
EDEN HILLS SUB. NO. 3, WEBER CO, UT
N.E. 1/4 SEC. 28, T.7N., R.1E., SLM.

SURVEY DATE: 4-4-92

RECEIVED

AUG 31 1992

Weber County Surveyors

000740