

DRAWING NUMBER

000741

PLAN HOLD CORPORATION • IRVINE, CALIFORNIA

ORDER BY NUMBER 0754P

DRAWING NUMBER

000741

PLAN HOLD CORPORATION • IRVINE, CALIFORNIA

ORDER BY NUMBER 0754P

DRAWING NUMBER

000741

PLAN HOLD CORPORATION • IRVINE, CALIFORNIA

ORDER BY NUMBER 0754P

DRAWING NUMBER

000741

PLAN HOLD CORPORATION • IRVINE, CALIFORNIA

ORDER BY NUMBER 0754P

SURVEYORS CERTIFICATE

I, Larry M. Butters, a registered Land Surveyor as prescribed by the laws of the State of Utah, and holding license No. 2596, do hereby certify that I made a survey of the herein described property and that this plan is a true and correct representation of said survey.

Date 4-24-92 Sign: Larry M. Butters

DESCRIPTION

A part of the Northwest Quarter of Section 13, T.6N., R.3W., S.L.B.&M. Beginning at a point S. 89°04'07" E. along the Section line 2014.36 ft. from the Northwest corner of said Section 13, and running thence S. 89°04'07" E. 671.45 ft. to the North Quarter corner of said Section 13, thence S. 0°34' W. along the Quarter Section line 1542.34 ft., thence N. 88°44'39" W. 1884.66 ft., thence N. 0°24'09" E. 235.91 ft., thence N. 89°35'45" W. 243.83 ft., thence S. 42°41'20" W. 820.32 ft. to the West line of Section 13 at a point S. 0°24'09" W. along the Section line 1909.01 ft. from the N.W. corner of said Section 13, thence N. 0°24'09" E. 1149.01 ft. along the Section line, thence S. 89°04'07" E. 2014.36 ft., thence N. 0°24'09" E. to the point of beginning. Excepting County Road. Cont. 58.24 Net Acres.

NARRATIVE

The purpose of this Survey was to define and stake boundary for the Sale of Property.

Basis of Bearings: North and West Section lines - State plane grid as furnished by W.C. Surveyor. Prop. bearings rotated, except East line used existing fence for Quarter Sec. line as directed by Weber County Surveyor.

LEGEND

- o Set 3/4" x 24" re-bar with plastic cap stamped L. BUTTERS, R.L.S. 2596
• 1/2" x 1/4" x 1/4" metal ribbon

BUTTERS SURVEYING

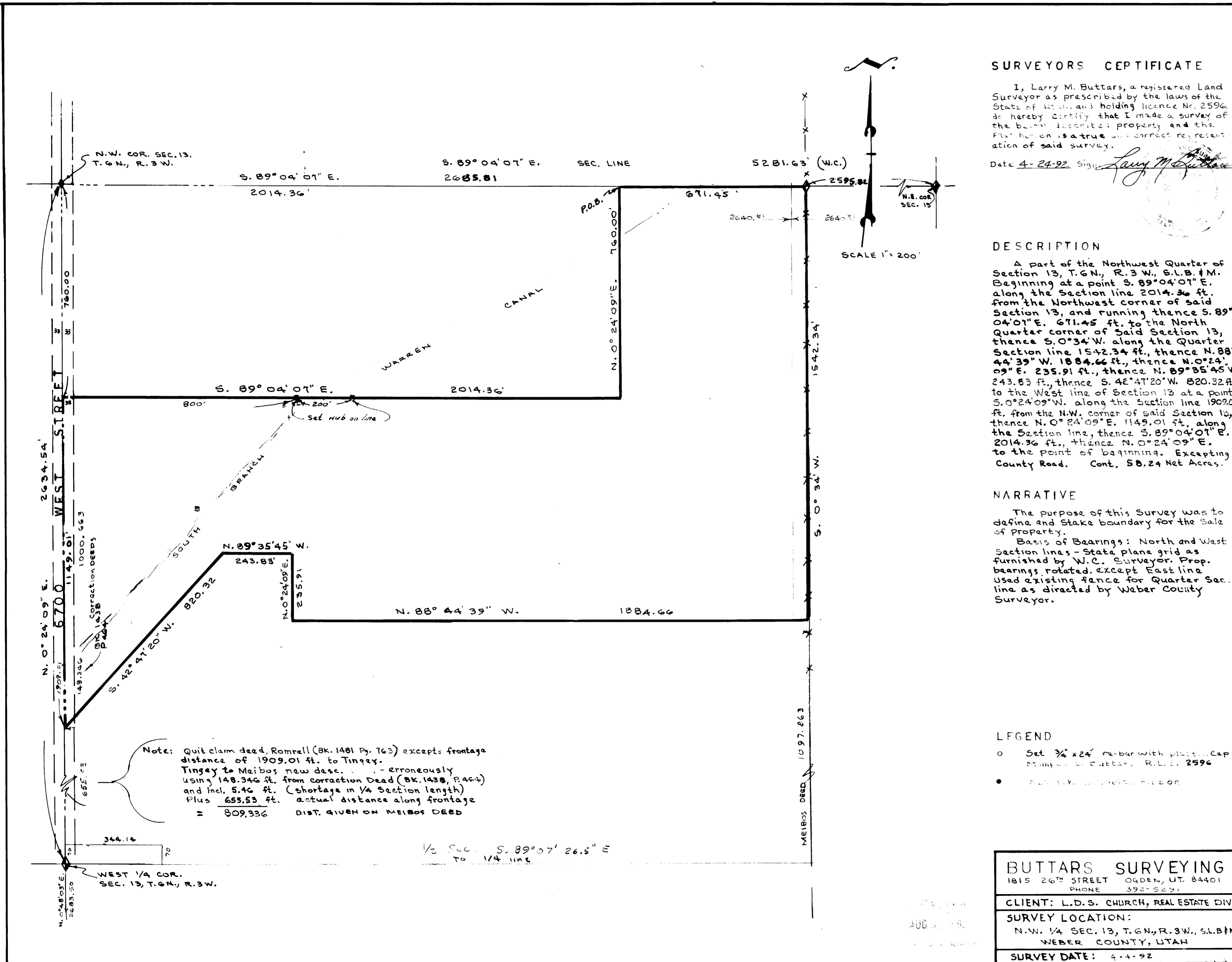
1815 26th STREET OGDEN, UT 84401
PHONE 392-5291

CLIENT: L.D.S. CHURCH, REAL ESTATE DIV.

SURVEY LOCATION:

N.W. 1/4 SEC. 13, T.6N., R.3W., S.L.B.&M.
WEBER COUNTY, UTAH

SURVEY DATE: 4-4-92



Note: Quit claim deed, Romrell (Bk. 1481 Pg. 763) excepts frontage distance of 1909.01 ft. to Tingey. Tingey to Maibos new desc. - erroneously using 148.346 ft. from correction Dead (Bk. 1438, Page 4) and incl. 5.46 ft. (shortage in 1/4 Section length) Plus 655.53 ft. actual distance along frontage = 809.336 DIST. GIVEN ON MAIBOS DEED

1/2 Sec. S. 89°07' 26.5" E To 1/4 line

AUG 11 1992