

DRAWING NUMBER

000746

PLAN HOLD CORPORATION • IRVINE, CALIFORNIA  
REORDER BY NUMBER 075AR

DRAWING NUMBER

000746

PLAN HOLD CORPORATION • IRVINE, CALIFORNIA  
REORDER BY NUMBER 075AR

DRAWING NUMBER

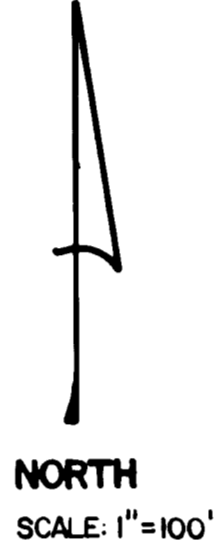
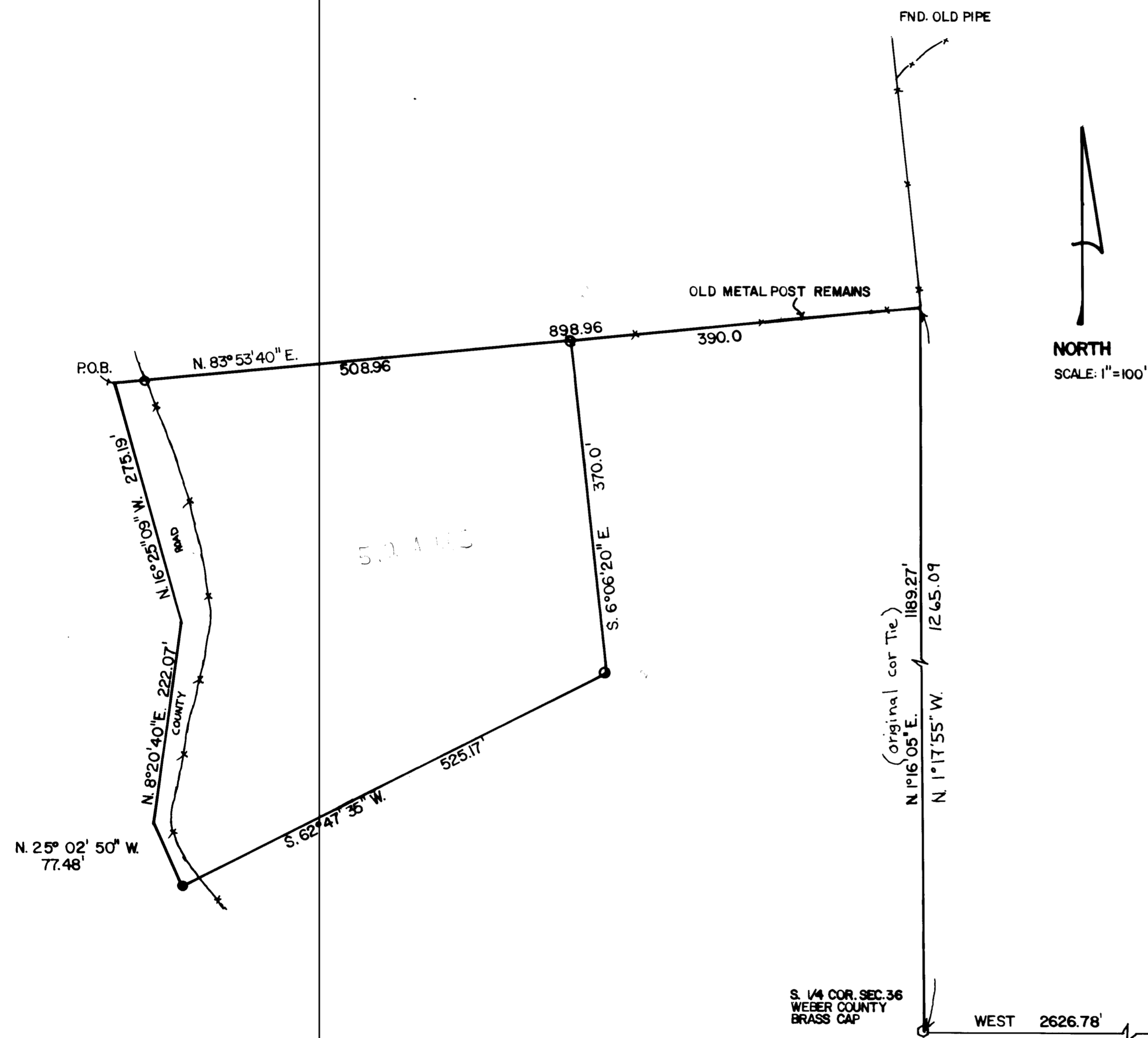
000746

PLAN HOLD CORPORATION • IRVINE, CALIFORNIA  
REORDER BY NUMBER 075AR

DRAWING NUMBER

000746

PLAN HOLD CORPORATION • IRVINE, CALIFORNIA  
REORDER BY NUMBER 075AR  
POSITION EDGE OF PRINT ON THIS LINE



I, DALLAS K. BUTTARS, A REGISTERED LAND SURVEYOR IN THE STATE OF UTAH AND HOLDING LICENSE NO. 6985, DO HEREBY CERTIFY THAT THIS PLAT IS A TRUE REPRESENTATION OF THE LANDS AND OF A SURVEY ON THE GROUND.

DATE: APRIL 28, 1992

Dallas K. Buttars

PROPERTY DESCRIPTION

PART OF THE SOUTHWEST QUARTER OF SECTION 36 TOWNSHIP 8 NORTH, RANGE 1 WEST, SALT LAKE BASE AND MFT... BEGINNING AT A POINT NORTH 1° 17' 55\" WEST 1265.09' FEET AND SOUTH 83° 53' 40\" WEST 898.96 FEET FROM THE SOUTH QUARTER CORNER OF SECTION 36, (A WEBER COUNTY BRASS CAP AS IT EXISTS IN 1992) AND RUNNING THENCE NORTH 83° 53' 40\" EAST 508.96 FEET, THENCE SOUTH 6° 06' 20\" EAST 370.0 FEET, THENCE SOUTH 62° 47' 35\" WEST 525.17 FEET, THENCE NORTH 25° 02' 50\" WEST 77.48 FEET, THENCE NORTH 8° 20' 40\" EAST 222.07 FEET, THENCE NORTH 16° 25' 09\" WEST 275.19 FEET TO THE POINT OF BEGINNING.

NARRATIVE

THIS SURVEY WAS MADE TO ESTABLISH A BOUNDARY IN A AREA THAT HAS A HISTORY OF PROBLEMS. THE SOUTH QUARTER OF SECTION 36 WAS MOVED IN 1966. AFTER REVIEWING MANY DOCUMENTS AND LOCATING EXISTING OCCUPATION LINES ON THE GROUND THE ABOVE SURVEY WAS MADE. THE BEARINGS USED ARE DUE EAST AND WEST ALONG THE QUARTER SECTION LINE BETWEEN THE SOUTH QUARTER CORNER AND THE SOUTH EAST CORNER OF SECTION 36.

RECEIVED  
SEP 25 1992  
Weber County Surveyor

LEGEND:  
O = SET REBAR & CAP

**BUTTARS SURVEYING**  
1815 26 TH ST. 392-5291  
OGDEN, UT. 84401 771-5949

FOR: STEVE DIXON

LOCATION: SOUTHWEST QUARTER SECTION 36, T.8N.R.1W.

DATE: APRIL 11, 1992

000746