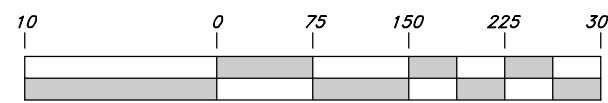


Scale: 1" = 150'



Graphic Scale

Calculated Section Corner of the Northwest Corner of Section 5, T6N, R2E, SLB&M Point of Beginning (Parcel 40007)

Reference Monument in the Northwest Corner of Section 5, T6N, R2E, SLB&M

Found Northeast Quarter Corner of Section 5, T6N, R2E, SLB&M

State of Utah Department of Natural Resources

Parcel # 23-012-0048

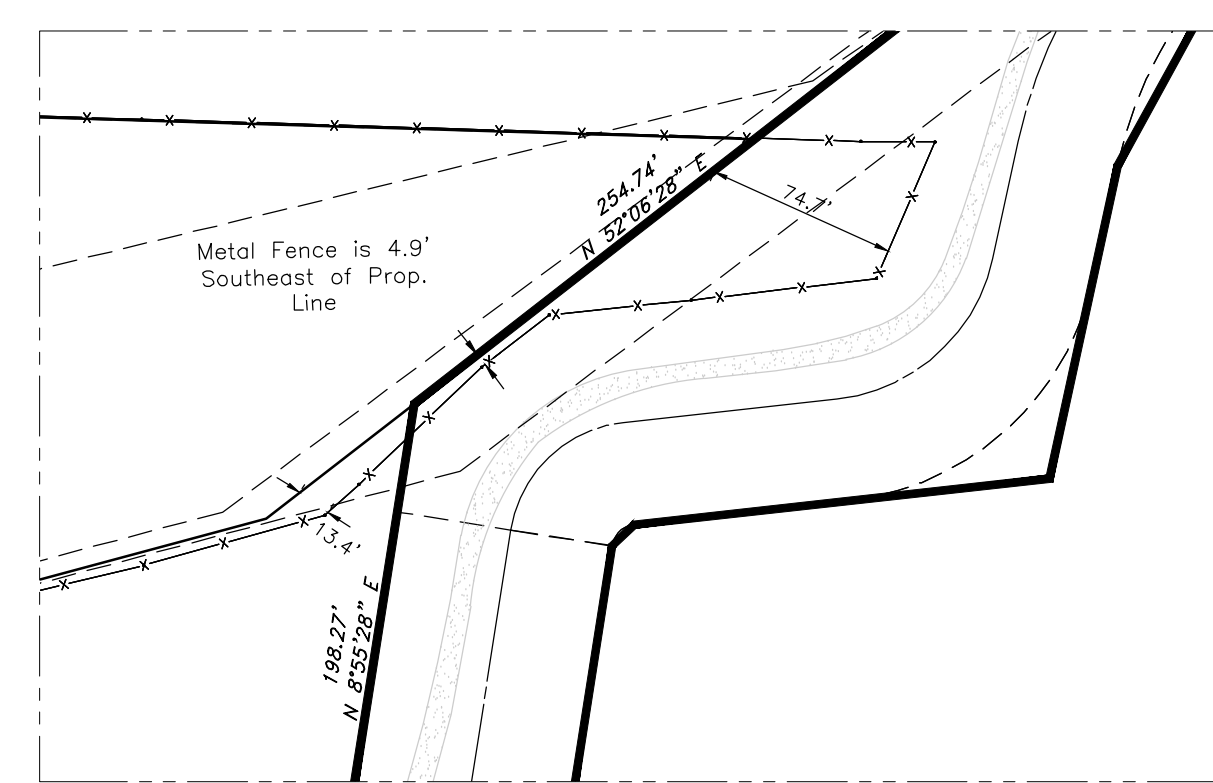
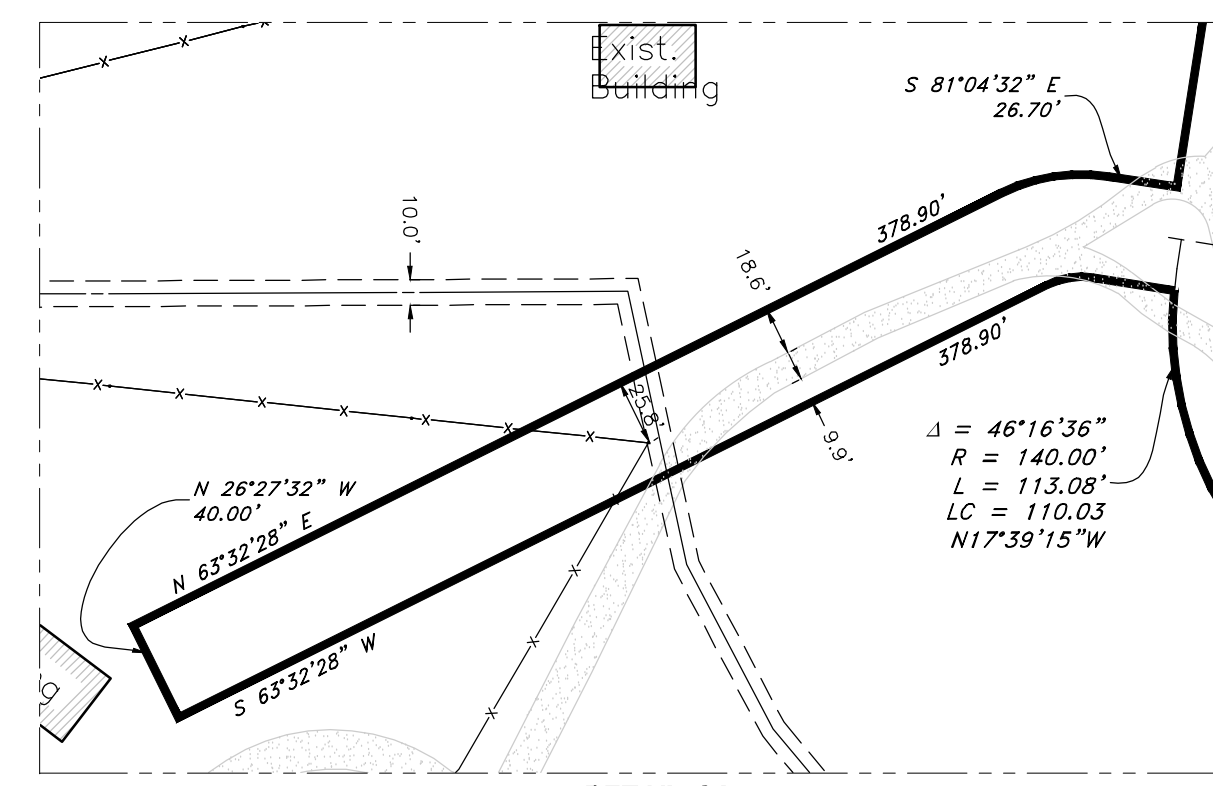
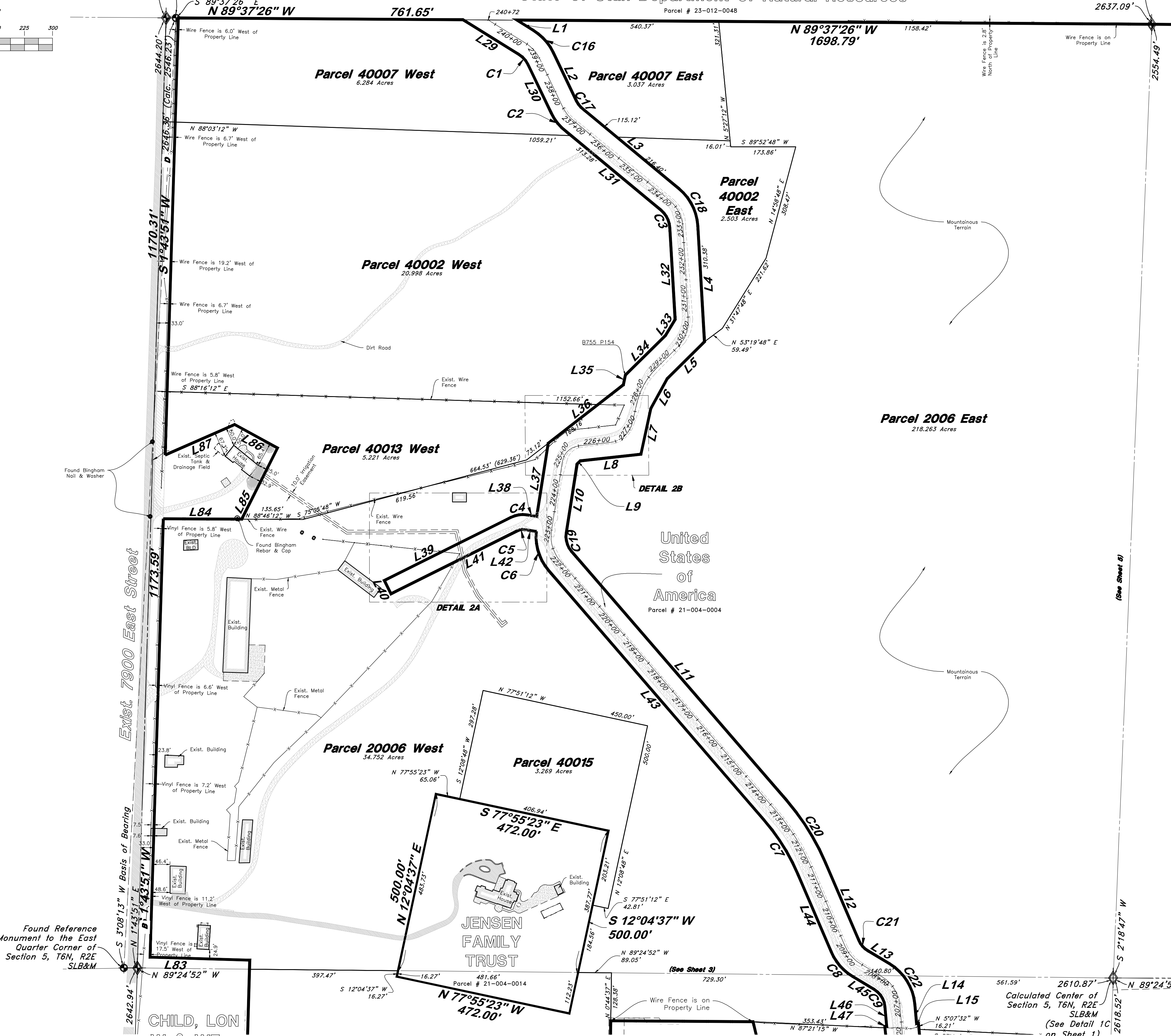
2637.09'



VICINITY MAP (Not to Scale)

Legend

- Monument to be set
- Found Centerline Monument
- Fence
- Existing Asphalt
- Existing Concrete
- Existing Gravel
- Easement
- Approximate Canal Location
- Existing Boundary
- Set 5/8" x 24" Long Rebar & Cap w/ Lathe



Found Reference Monument to the East Quarter Corner of Section 5, T6N, R2E, SLB&M

CHILD, LON W & WF PATTI ANN CHILD Parcel # 21-003-0012

Calculated Center of Section 5, T6N, R2E, SLB&M (See Detail 1C on Sheet 1)



RECEIVED DEC 11 2023 FILE # 7735

REF	DATE	DESCRIPTION

**GREAT BASIN ENGINEERING**

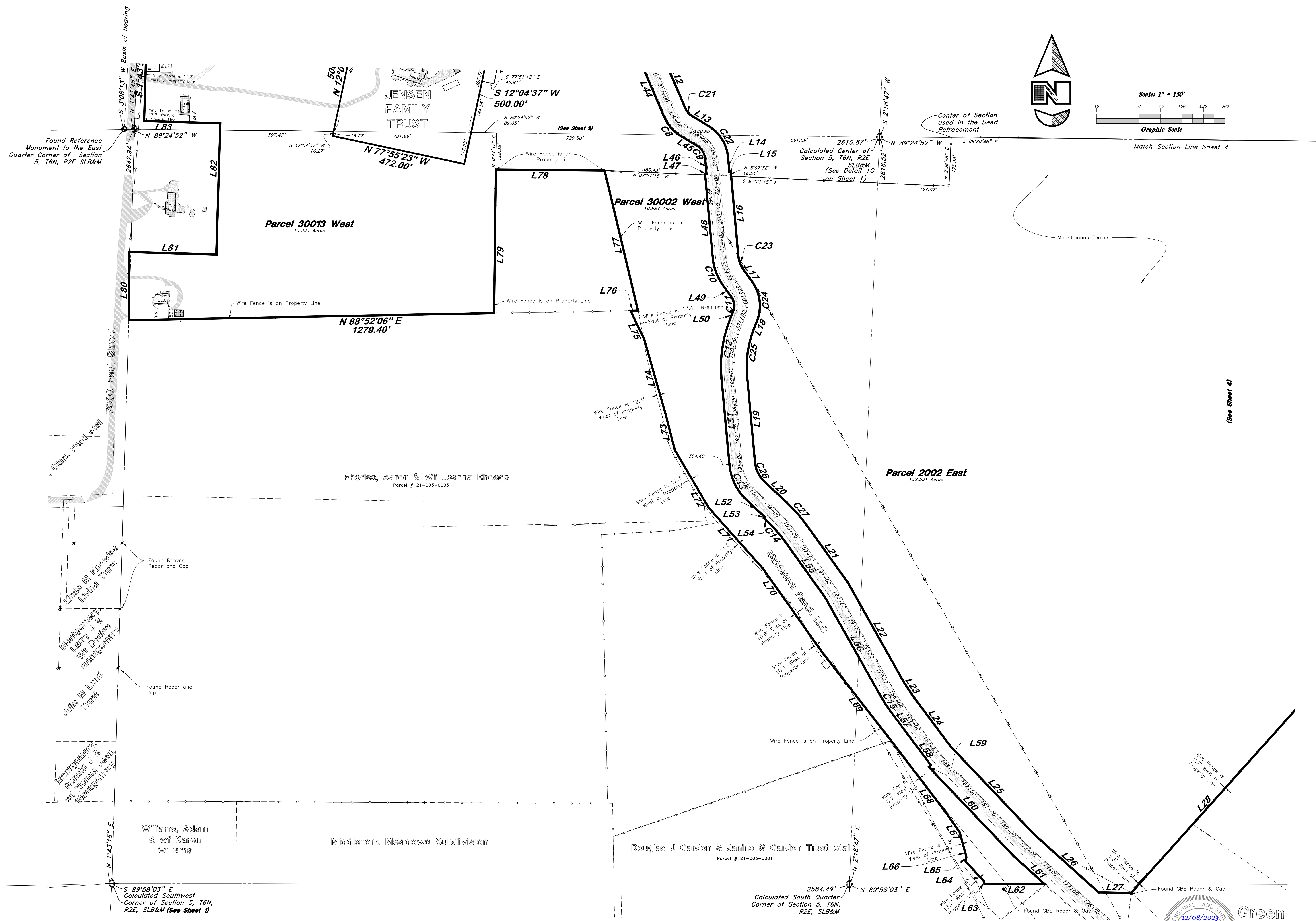
5746 SOUTH 1475 EAST OGDEN, UTAH 84403  
 MAIN (801)399-4451 S.L.C (801)521-0222 FAX (801)392-7544  
 WWW.GREATBASINENGINEERING.COM

**Record of Survey**

**Middlefork Ranch LLC**

1450 North 7900 East  
 Huntsville, Utah

A part of Sections 4 & 5, T6N, R2E, SLB&M, U.S. Survey



**GREAT BASIN ENGINEERING**

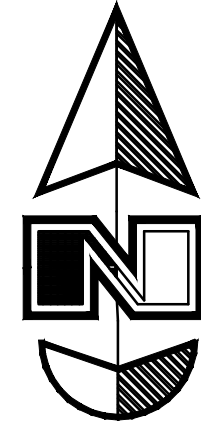
5746 SOUTH 1475 EAST OGDEN, UTAH 84403  
 MAIN (801)399-4451 S.L.C. (801)521-0222 FAX (801)392-7544  
 WWW.GREATBASINENGINEERING.COM

**Record of Survey**  
**Middlefork Ranch LLC**  
 1450 North 7900 East  
 Huntsville, Utah  
 A part of Sections 4 & 5, T6N, R2E, SLB&M, U.S. Survey

Jan, 2023  
 SHEET NO. **3** of 6  
 13N778



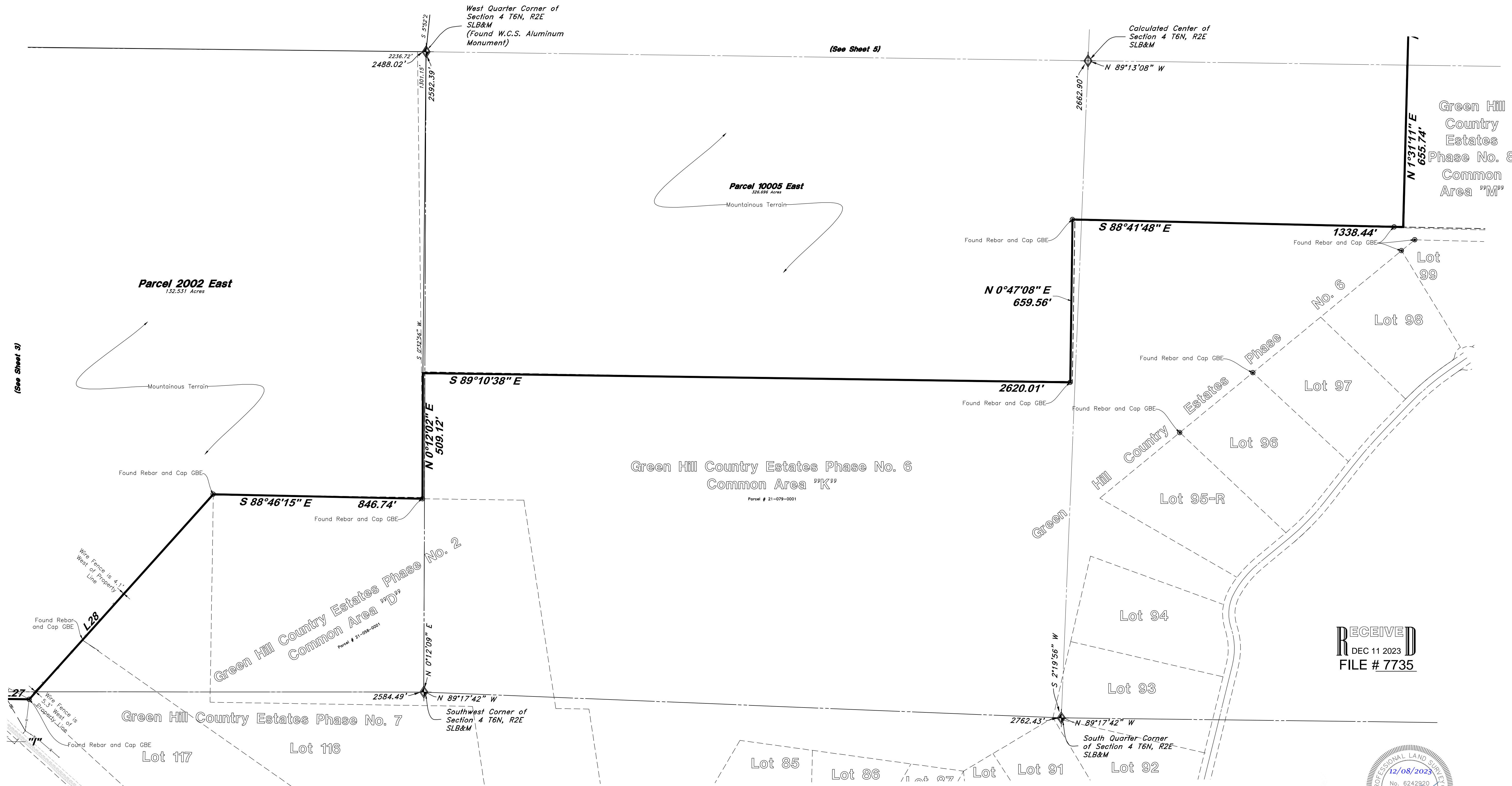
RECEIVED  
 DEC 11 2023  
 FILE # 7735



Scale: 1" = 200'



Graphic Scale



RECEIVED  
DEC 11 2023  
FILE # 7735



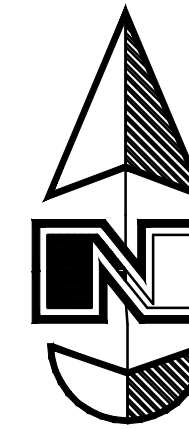
REF	DATE	DESCRIPTION

**GREAT BASIN ENGINEERING**  
 5746 SOUTH 1475 EAST OGDEN, UTAH 84403  
 MAIN (801)399-4451 S.L.C (801)521-0222 FAX (801)392-7544  
 WWW.GREATBASINENGINEERING.COM

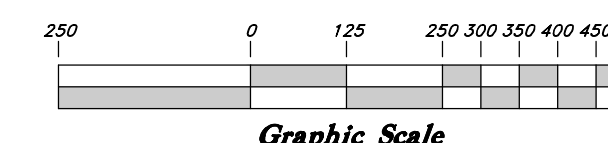
**Record of Survey**  
**Middlefork Ranch LLC**  
 1450 North 7900 East  
 Huntsville, Utah  
 A part of Sections 4 & 5, T6N, R2E, SLB&M, U.S. Survey

Jan, 2023

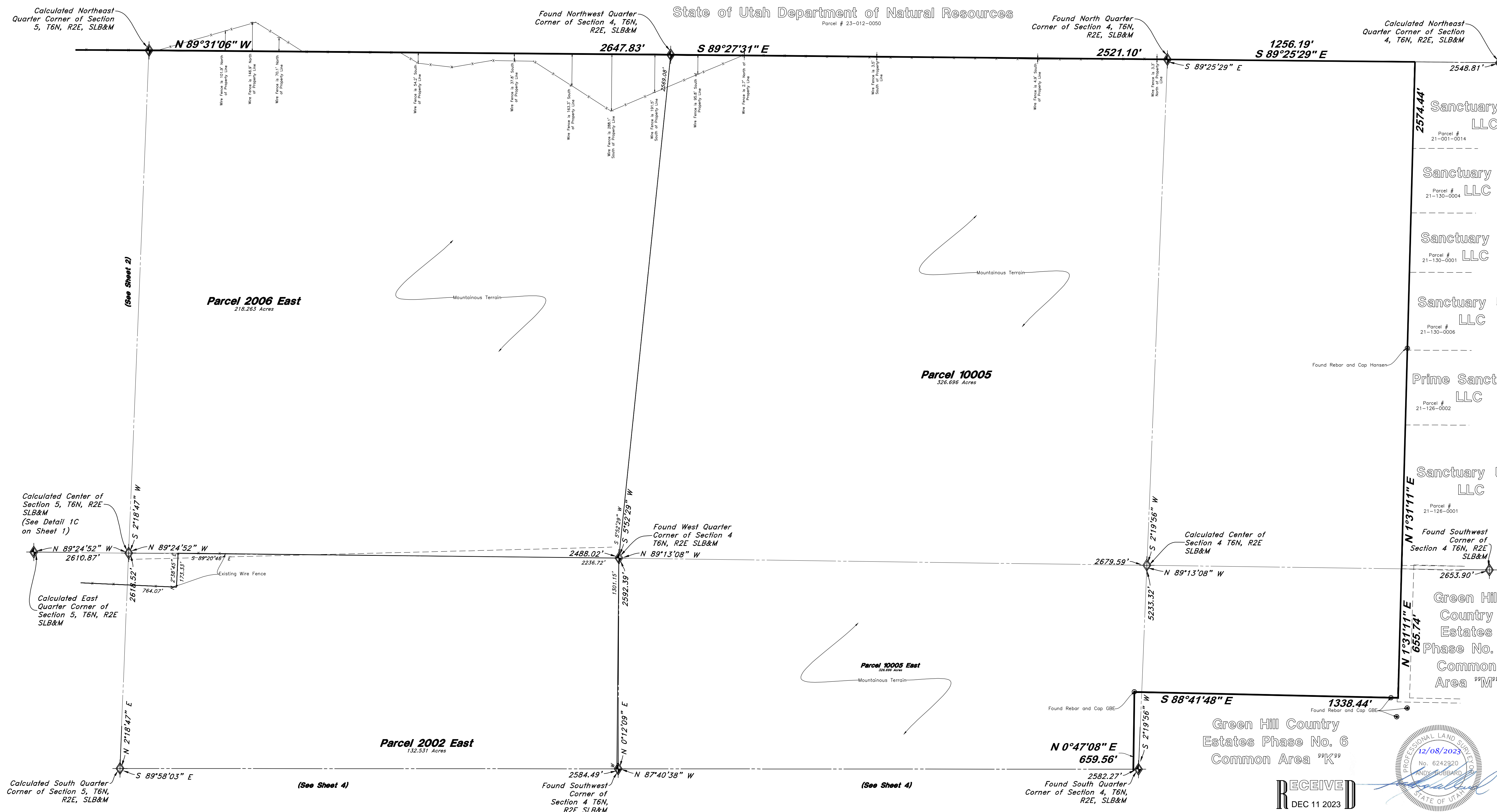
SHEET NO. **4** of 6



Scale: 1" = 250'



State of Utah Department of Natural Resources



Calculated Northeast Quarter Corner of Section 4, T6N, R2E, SLB&M

Found Northwest Quarter Corner of Section 4, T6N, R2E, SLB&M

Found North Quarter Corner of Section 4, T6N, R2E, SLB&M

(See Sheet 2)

Parcel 2006 East  
216.263 Acres

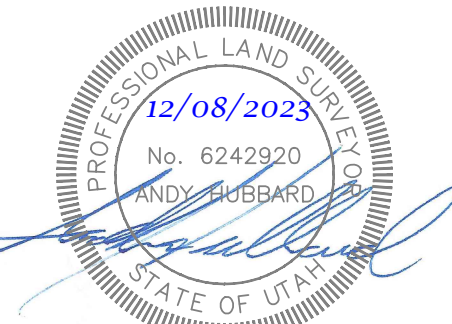
Parcel 10005  
326.696 Acres

Parcel 2002 East  
132.331 Acres

- Sanctuary Utah LLC  
Parcel # 21-001-0014
- Sanctuary Utah LLC  
Parcel # 21-130-0004
- Sanctuary Utah LLC  
Parcel # 21-130-0001
- Sanctuary Utah LLC  
Parcel # 21-130-0006
- Prime Sanctuary LLC  
Parcel # 21-130-0002
- Sanctuary Utah LLC  
Parcel # 21-126-0001

- Sanctuary Utah LLC  
Parcel # 21-126-0001
- Found Southwest Corner of Section 4 T6N, R2E SLB&M
- Green Hill Country Estates Phase No. 8 Common Area "M"

Green Hill Country Estates Phase No. 6 Common Area "K"



RECEIVED  
DEC 11 2023  
FILE # 7735

REF.	DATE	DESCRIPTION

**GREAT BASIN ENGINEERING**

5746 SOUTH 1475 EAST OGDEN, UTAH 84403  
 MAIN (801)394-4515 S.L.C. (801)521-0222 FAX (801)392-7544  
 WWW.GREATBASINENGINEERING.COM

**Record of Survey**

**Middlefork Ranch LLC**  
 1450 North 7900 East  
 Huntsville, Utah  
 A part of Sections 4 & 5, T6N, R2E, SLB&M, U.S. Survey

PARCEL LINE DATA		
SEGMENT	LENGTH	BEARING
L1	52.37'	S58° 08' 52"E
L2	144.07'	S25° 32' 32"E
L3	331.52'	S50° 18' 32"E
L4	310.38'	S3° 17' 32"E
L5	140.18'	S45° 15' 28"W
L6	91.20'	S28° 45' 28"W
L7	125.10'	S12° 14' 28"W
L8	163.20'	S83° 41' 28"W
L9	11.91'	S46° 18' 06"W
L10	187.05'	S8° 55' 28"W
L11	881.30'	S40° 47' 32"E
L12	227.00'	S23° 12' 32"E
L13	68.00'	S58° 55' 32"E
L14	52.60'	S5° 07' 32"E
L15	5.00'	N84° 52' 28"E
L16	294.40'	S5° 07' 32"E
L17	48.20'	S36° 04' 32"E
L18	27.80'	S21° 55' 28"W
L19	304.40'	S5° 13' 32"E
L20	107.20'	S46° 52' 32"E
L21	247.17'	S35° 40' 32"E
L22	400.17'	S29° 23' 32"E
L23	58.99'	S33° 06' 32"E
L24	219.85'	S36° 49' 32"E
L25	425.61'	S43° 34' 32"E

PARCEL LINE DATA		
SEGMENT	LENGTH	BEARING
L26	302.71'	S47° 59' 32"E
L27	114.54'	S89° 05' 18"E
L28	1115.33'	N41° 54' 49"E
L29	175.09'	N58° 08' 52"W
L30	143.95'	N25° 32' 32"W
L31	329.47'	N50° 18' 32"W
L32	246.60'	N3° 17' 32"W
L33	50.20'	N31° 30' 28"E
L34	150.20'	N45° 15' 28"E
L35	26.60'	N12° 14' 28"E
L36	254.74'	N52° 06' 28"E
L37	198.27'	N8° 55' 28"E
L38	26.70'	S81° 04' 32"E
L39	378.90'	N63° 32' 28"E
L40	40.00'	N26° 27' 32"W
L41	378.90'	S63° 32' 28"W
L42	31.95'	N81° 04' 32"W
L43	881.30'	N40° 47' 32"W
L44	227.00'	N23° 12' 32"W
L45	68.00'	N58° 55' 32"W
L46	52.60'	N5° 07' 32"W
L47	5.00'	N84° 52' 28"E
L48	294.40'	N5° 07' 32"W
L49	48.20'	N36° 04' 32"W
L50	27.80'	N21° 55' 28"E

PARCEL LINE DATA		
SEGMENT	LENGTH	BEARING
L51	304.40'	N5° 13' 32"W
L52	86.70'	N46° 52' 32"W
L53	5.00'	N43° 07' 28"E
L54	20.50'	N46° 52' 32"W
L55	241.96'	N35° 40' 32"W
L56	394.96'	N29° 23' 32"W
L57	96.36'	N36° 49' 32"W
L58	129.09'	N36° 49' 32"W
L59	10.00'	N46° 25' 28"E
L60	430.51'	N43° 34' 32"W
L61	147.27'	N47° 59' 32"W
L62	210.24'	S89° 58' 03"E
L63	10.77'	S16° 28' 45"E
L64	93.93'	S42° 44' 20"E
L65	15.53'	S10° 12' 46"W
L66	90.10'	S15° 18' 36"E
L67	78.66'	S34° 41' 20"E
L68	322.88'	S37° 20' 27"E
L69	395.77'	S37° 57' 57"E
L70	354.71'	S35° 15' 58"E
L71	285.43'	S41° 42' 27"E
L72	234.72'	S30° 28' 53"E
L73	124.67'	S14° 26' 27"E
L74	278.28'	S15° 56' 15"E
L75	110.89'	S25° 31' 14"E

PARCEL LINE DATA		
SEGMENT	LENGTH	BEARING
L76	25.90'	S89° 00' 00"W
L77	504.61'	S13° 25' 31"E
L78	380.50'	S89° 36' 21"E
L79	502.15'	N0° 44' 37"E
L80	239.06'	S0° 13' 03"W
L81	305.33'	N88° 16' 39"W
L82	460.00'	S1° 43' 21"W
L83	267.04'	S88° 16' 39"E
L84	210.03'	S89° 42' 41"E
L85	213.52'	N26° 35' 42"E
L86	130.47'	N61° 20' 42"W
L87	203.01'	S66° 20' 47"W

PROPERTY LINE CURVE DATA					
SEGMENT	LENGTH	RADIUS	DELTA	Chord	Chord Bearing
C1	37.45	19.81	33°00'44"	36.935'	N 42°02'54" W
C2	64.87	41.15	27°31'51"	64.246'	N 39°08'41" W
C3	53.34	19.81	47°01'00"	51.855'	N 26°48'02" W
C4	43.23	21.34	35°23'00"	42.545'	N 81°13'58" E
C5	18.53	9.14	35°23'00"	18.234'	S 81°13'58" W
C6	113.08	42.67	46°16'36"	110.026'	N 17°39'15" W
C7	171.86	170.69	17°35'00"	171.183'	N 32°00'02" W
C8	87.27	42.67	35°43'00"	85.866'	N 41°04'02" W
C9	56.34	18.29	53°48'00"	54.292'	N 32°01'32" W
C10	105.33	59.44	30°57'00"	104.059'	N 20°36'02" W
C11	55.68	16.76	58°00'00"	53.329'	N 7°04'32" W
C12	210.87	135.64	27°09'00"	208.899'	N 8°20'58" E
C13	141.75	59.44	41°39'00"	138.651'	N 26°03'02" W
C14	87.96	137.16	11°12'00"	87.825'	N 41°16'32" W
C15	71.35	167.64	7°26'00"	71.305'	N 33°06'32" W
C16	80.35	42.67	32°52'57"	79.249'	S 41°59'01" E
C17	30.28	18.29	28°54'48"	29.958'	S 39°45'15" E
C18	114.88	42.67	47°01'00"	111.687'	S 26°48'02" E
C19	52.12	18.29	49°46'00"	50.493'	S 15°54'32" E
C20	196.41	195.07	17°35'00"	195.638'	S 32°00'02" E

PROPERTY LINE CURVE DATA					
SEGMENT	LENGTH	RADIUS	DELTA	Chord	Chord Bearing
C21	37.40	18.29	35°43'00"	36.800'	S 41°04'02" E
C22	131.46	42.67	53°48'00"	126.682'	S 32°01'32" E
C23	56.72	32.00	30°57'00"	56.032'	S 20°36'02" E
C24	146.78	44.20	58°00'00"	140.595'	S 7°04'32" E
C25	168.22	108.20	27°09'00"	166.650'	S 8°20'58" W
C26	76.33	32.00	41°39'00"	74.658'	S 26°03'02" E
C27	106.53	166.12	11°12'00"	106.365'	S 41°16'32" E

RECEIVED  
DEC 11 2023  
FILE # 7735



**GREAT BASIN ENGINEERING**  
5746 SOUTH 1475 EAST OGDEN, UTAH 84403  
MAIN (801)394-4515 S.L.C (801)521-0222 FAX (801)392-7544  
WWW.GREATBASINENGINEERING.COM

**Record of Survey**  
**Middlefork Ranch LLC**  
1450 North 7900 East  
Hurtsville, Utah  
A part of Sections 4 & 5, T6N, R2E, SL&M, U.S. Survey

Jan, 2023

SHEET NO.  
**6** of 6