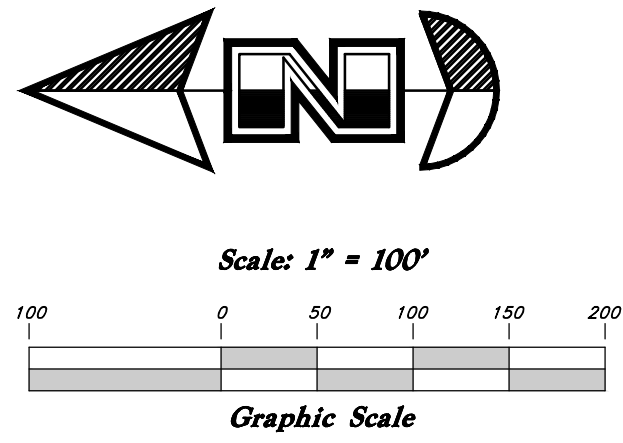


MIDA - SDL #10

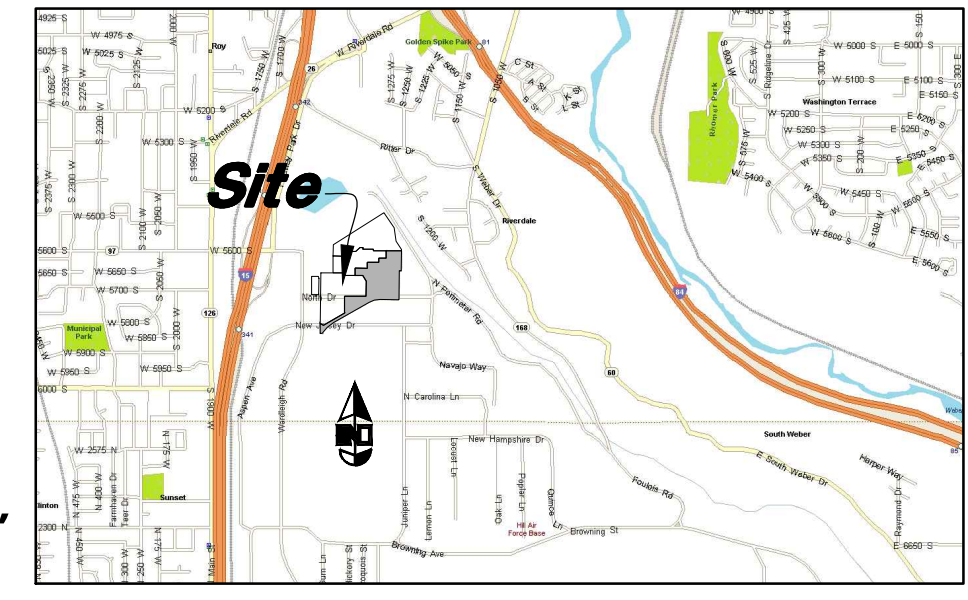
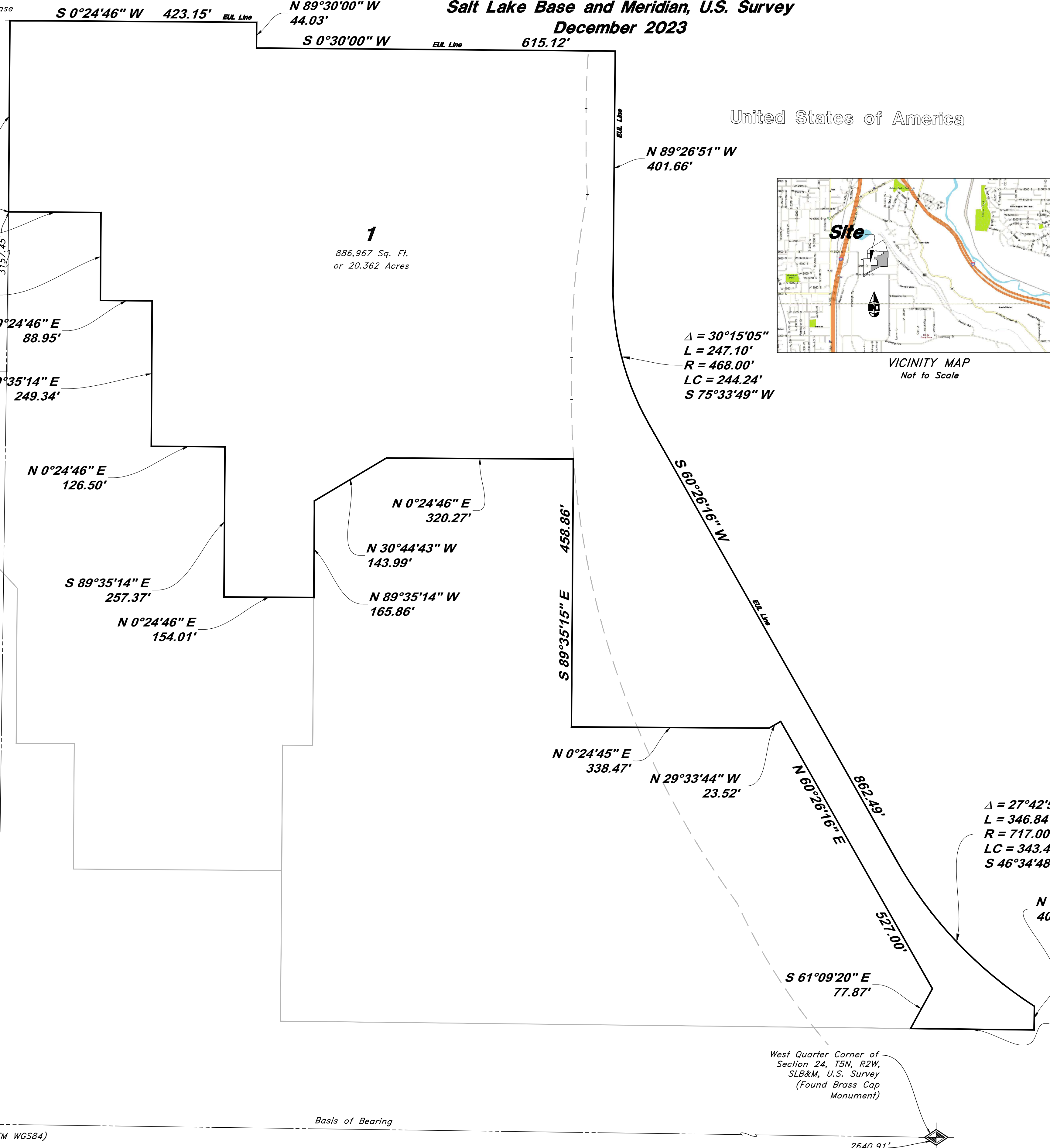
(Recordation Plan)

A part of the North Half of Section 24, Township 5 North, Range 2 West,
Salt Lake Base and Meridian, U.S. Survey
December 2023



Legend

- ▲ Set Nail & Washer
- Set Rebar & Cap w/ Fencepost
- Set Hub & Tack
- ⊕ Monument to be set
- (Rad.) Radial Line
- E.U.L. Enhanced Use Lease
- (N/R) Non-Radial Line
- - - Fence
- - - Boundary line

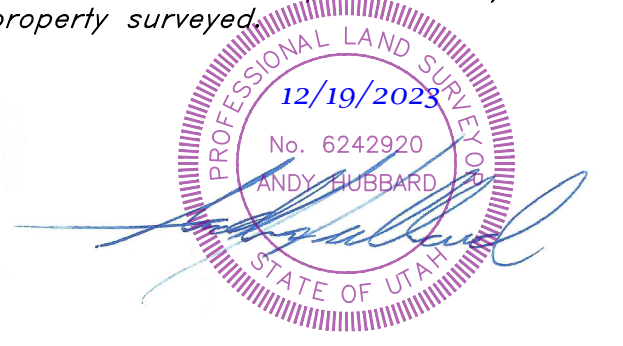


NARRATIVE
This Survey was requested by Mr. Michael Wagstaff for purposes of defining the boundaries of this parcel.
Brass Cap Monuments were found at the Northwest and West Quarter Corner and Southwest corner of Section 24, T5N, R2W, SLB&M, U.S. Survey. A line bearing N 0°47'30" E between these two monuments was used as the basis of bearings.
Properly corners were not set at this time.
This Survey is being filed to show the updated Section Line bearings and Distances in UTM 12 North Geodetic System WGS84. The Bearings and Position of the Parcel Boundary has not changed, and fits the improvements and infrastructure it was intended to encompass.

BOUNDARY DESCRIPTION
A part of the North Half of Section 24, Township 5 North, Range 2 West, Salt Lake Base and Meridian, U.S. Survey;
Beginning at a point 342.14 feet South 00°47'33" West along the Section line and 3157.45 feet South 89°12'27" East from the Northwest corner of said Section 24, and running thence South 89°35'14" East 328.00 feet to a point on the Enhanced Use Lease (EUL) Line; thence South 0°24'46" West 423.15 feet; thence North 89°30'00" East 44.03 feet; thence South 0°30'00" West 615.12 feet; thence North 89°26'51" West 401.66 feet to a point on a 468.00 foot radius curve to the left; thence Southwesterly along said curve a distance of 247.10 feet (Central Angle equals 30°15'05", Long Chord bears South 75°33'49" West 244.24 feet); thence South 60°26'16" West 862.49 feet to a point on a 717.00 foot radius curve to the left; thence Southwesterly along said curve a distance of 346.84 feet (Central Angle equals 27°42'58", Long Chord bears South 46°34'48" West 343.47 feet); thence North 89°19'15" West 40.80 feet; thence North 0°40'45" East 211.89 feet; thence South 61°09'20" East 77.87 feet; thence North 60°26'16" East 527.00 feet; thence South 89°35'15" East 458.86 feet; thence North 0°24'46" East 320.27 feet; thence North 30°44'43" West 143.99 feet; thence North 89°35'14" West 165.86 feet; thence North 0°24'46" East 154.01 feet; thence South 89°35'14" East 257.37 feet; thence North 0°24'46" East 126.50 feet; thence South 89°35'14" East 150.98 feet; thence North 0°24'46" East 88.95 feet; thence South 89°35'14" East 158.51 feet to the point of beginning.

Contains 20.362 acres.

SURVEYOR'S CERTIFICATE
I, Andy Hubbard do hereby certify that I am a Professional Land Surveyor, and that I hold Certificate No. 6242920, in accordance with Title 58, Chapter 22, of the Professional Engineers and Surveyors Licensing Act, and I have made a survey of the above described property according to Section 17-23-17 and that the above plat correctly shows the true dimensions of the property surveyed.



RECEIVED
DEC 21 2023
FILE # 7751

NOTE:
The Military Installation Development Authority ("MIDA") is a Utah State Authority (see Utah Code Annotated Title 63H-1) with statewide jurisdiction. It was created in 2007 with the purpose of facilitating the development of military land in one or more project areas. As an authority in Utah, it is a political subdivision of the state.

REV	DATE	DESCRIPTION

GREAT BASIN ENGINEERING
5746 SOUTH 1475 EAST OGDEN, UTAH 84403
MAIN (801)394-4515 S.L.C.(801)521-0222 FAX (801)399-7544
WWW.GRETBASINENGINEERING.COM

Record of Survey
Falcon Hill - SDL#10
North Street and Cottonwood Street
Hill Air Force Base, Utah

December, 2023
SHEET NO.
C1
19/903