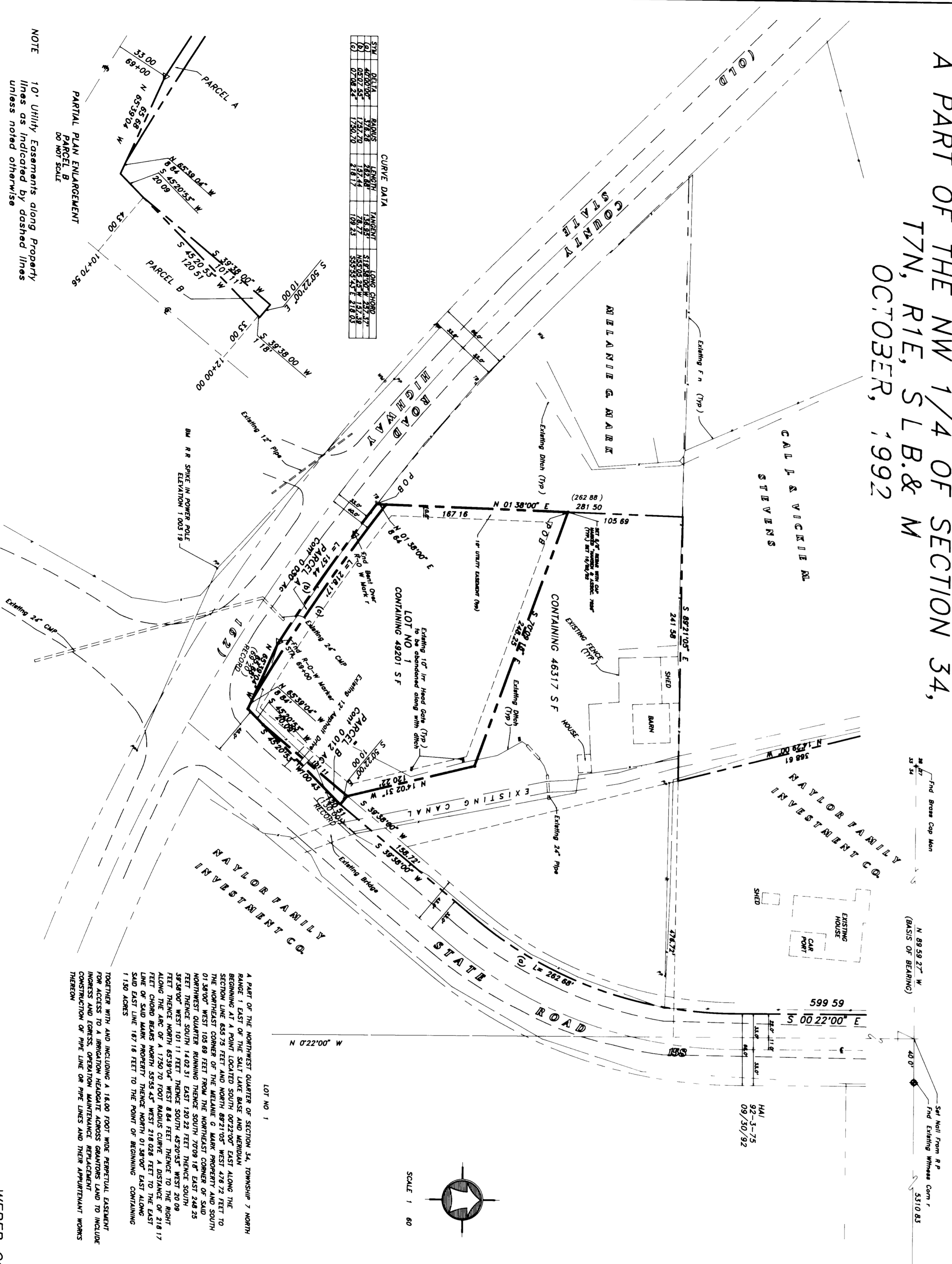


KLANIAN SUBDIVISION
A PART OF THE NW 1/4 OF SECTION 34,
T7N, R1E, S L.B. & M
OCTOBER, 1992



NOTE
10' Utility Easements along Property Lines as indicated by dashed lines
Parcel A to be Quit Claimed to UDOT
Parcel B to be Quit Claimed to UDOT

WEBER COUNTY ATTORNEY
I have examined this subdivision plat and in my opinion it conforms to the requirements of the laws of the State of Utah and I hereby certify that the same are correct and in accordance with the laws of the State of Utah.

WEBER COUNTY SURVEYOR
I hereby certify that I have investigated the lines of survey of this subdivision and find them to be correct and in accordance with the laws of the State of Utah.

WEBER COUNTY ENGINEER
I hereby certify that I approve the required improvement standards and drawings for this subdivision and I guarantee the financial guarantee for these improvements.

WEBER COUNTY COMMISSION ACCEPTANCE
This is to certify that this subdivision plat and the dedication and financial guarantee of public improvements hereon are hereby accepted by the Commission on the 1992 day of Weber County, 1992.

WEBER COUNTY PLANNING COMMISSION
This is to certify that this subdivision plat was duly approved by the Weber County Planning Commission on the 1992 day of Weber County, 1992.

COUNTY RECORDER
ENTRY NO. FEE PAID
RECORDED AT
M BOOK OF OFFICIAL RECORDS PAGE
DEC 17 1992
COUNTY RECORDER

HANSEN & ASSOCIATES, P.C.
Consulting Engineers and Land Surveyors
538 North Main Brigham City Utah 84302
763-3441 388-4000

Signature
day of 1992

Signature
day of 1992

Signature
day of 1992

Chairman, Weber County Commission

Chairman, Weber County Planning Commission

BY DEPUTY

Table with 4 columns: CURVE DATA, CHORD BEARS, CHORD BEARS, CHORD BEARS. Contains numerical data for curve calculations.

PARCEL A
A PART OF THE NORTHWEST QUARTER OF SECTION 34, TOWNSHIP 7 NORTH RANGE 1 EAST OF THE SALT LAKE BASIN AND MERIDIAN BEGINNING AT A POINT LOCATED SOUTH 02°22'00" EAST ALONG THE WEST LINE OF THE NORTHWEST QUARTER OF SECTION 34 TO THE NORTHEAST CORNER OF THE RELIANCE C OIL PROPERTY AND SOUTH 01°30'00" WEST 108.8 FEET FROM THE NORTHEAST CORNER OF SAID RELIANCE C OIL PROPERTY TO THE NORTHEAST CORNER OF SAID RELIANCE C OIL PROPERTY... (Detailed description of Parcel A boundaries and area)

PARCEL A
A PART OF THE NORTHWEST QUARTER OF SECTION 34, TOWNSHIP 7 NORTH RANGE 1 EAST OF THE SALT LAKE BASIN AND MERIDIAN BEGINNING AT A POINT ON THE NORTH LINE OF SAID QUARTER SECTION 34... (Detailed description of Parcel A boundaries and area)

PARCEL B
A PART OF THE NORTHWEST QUARTER OF SECTION 34, TOWNSHIP 7 NORTH RANGE 1 EAST OF THE SALT LAKE BASIN AND MERIDIAN BEGINNING AT A POINT ON THE NORTH LINE OF SAID QUARTER SECTION 34... (Detailed description of Parcel B boundaries and area)

PROPERTY DESCRIPTIONS

Form for property descriptions with fields for State of Utah, County of Weber, and signed this day of 1992.

ACKNOWLEDGEMENT

Form for acknowledgement with fields for State of Utah, County of Weber, and signed this day of 1992.

OWNERS DEDICATION

We the undersigned owners of the herein described tract of land hereby set apart and subdivide the same into lots and streets as shown on this plat and more sold from the same portions of said land and hereby dedicate, grant and convey to Weber County, Utah, all those parts of said land and more sold from the same for the purpose of providing for the maintenance and operation of public utility service lines and drainage as may be authorized by Weber County.

SURVEYORS CERTIFICATE

I, K. Greg Hansen, a registered land surveyor in the State of Utah do hereby certify that this plat of land and more sold from the same is a true and correct representation of the following description of lands and more sold from the same as shown on this plat and more sold from the same and of a survey made on the ground.

