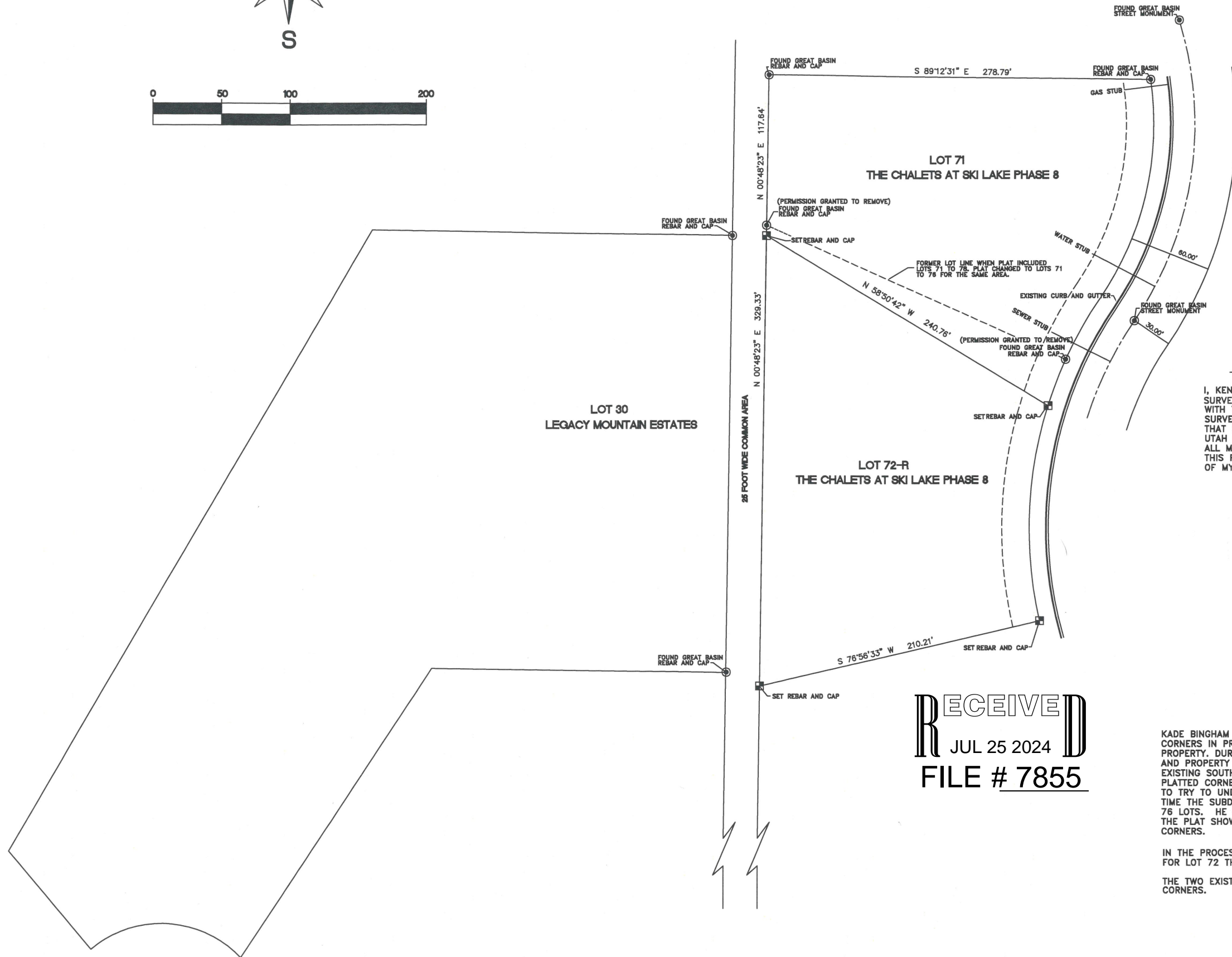



PART OF THE NORTHEAST 1/4 OF SECTION 23, T6N, R1E, SLB AND M, US SURVEY
HUNTSVILLE, WEBER COUNTY, UTAH
JULY 2024



LEGEND

- FOUND GREAT BASIN MONUMENTS
- KEN GARDNER MONUMENTS SET
-  CAP DETAIL
ORANGE CAP ON 5/8" REBAR

SURVEYOR'S CERTIFICATE

I, KEN E. GARDNER, DO HEREBY CERTIFY THAT I AM A REGISTERED LAND SURVEYOR AND THAT I HOLD LICENSE NO. 154270-2201 IN ACCORDANCE WITH TITLE 58, CHAPTER 22 OF THE PROFESSIONAL ENGINEERS AND LAND SURVEYORS LICENSING ACT, UTAH CODE ANNOTATED, AS AMENDED. I CERTIFY THAT SAID SURVEY WAS COMPLETED IN ACCORDANCE WITH SECTION 17-23-17, UTAH CODE ANNOTATED, AS AMENDED. I FURTHER CERTIFY THAT I HAVE VERIFIED ALL MEASUREMENTS AND THAT MONUMENTS HAVE BEEN PLACED AS SHOWN ON THIS PLAT. I HEREBY STATE THAT THIS PLAT IS TRUE AND CORRECT TO THE BEST OF MY KNOWLEDGE, INFORMATION, BELIEF AND IN MY PROFESSIONAL OPINION.



NARRATIVE

KADE BINGHAM REQUESTED THAT I VERIFY THE LOCATION OF LOT 71 PROPERTY CORNERS IN PREPARATION FOR THE CONSTRUCTION OF A NEW HOME ON THE PROPERTY. DURING THE INITIAL SURVEY I LOCATED BRASS STREET MONUMENTS AND PROPERTY CORNERS AS SET BY GREAT BASIN ENGINEERING. THE TWO EXISTING SOUTHERLY LOT CORNERS WERE FOUND TO BE DIFFERENT THAN THE PLATTED CORNERS. I MET WITH MARK BABBITT WITH GREAT BASIN ENGINEERING TO TRY TO UNDERSTAND THE DISCREPANCY. MARK EXPLAINED THAT AT ONE TIME THE SUBDIVISION WAS TO INCLUDE 78 LOTS RATHER THAN THE CURRENT 76 LOTS. HE BELIEVES THAT THE EXISTING CORNERS WERE LEFT OVER FROM THE PLAT SHOWING 78 LOTS. MARK GAVE ME PERMISSION TO REMOVE THE CORNERS.

IN THE PROCESS OF CHECKING LOTS CORNERS FOR LOT 71 I ALSO SET CORNERS FOR LOT 72 THAT WERE MISSING.

THE TWO EXISTING STREET MONUMENTS WERE USED TO ESTABLISH PROPERTY CORNERS.

RECEIVED
JUL 25 2024
FILE # 7855

SCALE:	N.T.S.
DATE:	JUL_2024
DESIGN:	K.E.G
DRAWN:	K.E.G
CHECKED:	
REVISIONS	DESCRIPTION
DATE	
DWG: C:\CUSTOMERS\RESIDENTIAL\2024\BINGHAM.DWG	

THE CHALETS AT SKI LAKE PHASE 8
LOT 71 AND 72
PROPERTY CORNERS
1051 SOUTH QUAIL HOLLOW, HUNTSVILLE, UTAH



5566 SOUTH 200 WEST
WASHINGTON TERRACE
UTAH 84405
(801) 589-0447

1
1