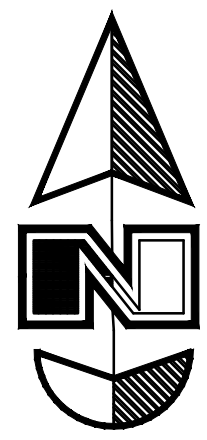


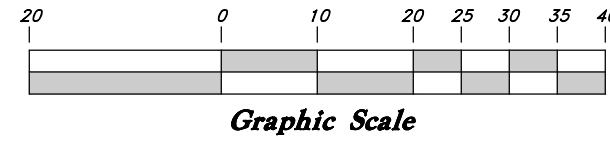
Legend

(Note: All items may not appear on drawing)

- | | | | |
|----------------------------|--|----------------------------|---------|
| San. Sewer Manhole | | Top of Walk | TW |
| Water Manhole | | Top of Concrete | TCN |
| Storm Drain Manhole | | Natural Ground | NG |
| Cleanout | | Finish Grade | FG |
| Electrical Manhole | | Match Existing | ME |
| Gas Meter | | Fire Department Connection | FDC |
| Power Meter | | Finish Contour | -90- |
| | | Exist. Contour | -90- |
| | | Finish Grade | 95.3374 |
| | | Exist. Grade | 95.7214 |
| | | Ridge Line | R |
| | | Direction of Flow | |
| Catch Basins | | Existing Asphalt | |
| Exist. Fire Hydrant | | New Asphalt | |
| Fire Hydrant | | Heavy Duty Asphalt | |
| Fire Department Connection | | Existing Concrete | |
| Post Indicator Valve | | New Concrete | |
| Exist. Post | | Demo'd Road Base | |
| Exist. Water Valve | | Spill Curb & Gutter | |
| Water Valve | | Demo Tree | |
| Sanitary Sewer | | Tree To Remain in Place | |
| Culinary Water | | | |
| Gas Line | | | |
| Irrigation Line | | | |
| Storm Drain | | | |
| Telephone Line | | | |
| Secondary Waterline | | | |
| Power Line | | | |
| Fire Line | | | |
| Land Drain | | | |
| Power pole | | | |
| Power pole w/guy | | | |
| Light Pole | | | |
| Fence | | | |
| Flowline of ditch | | | |
| Overhead Power Line | | | |
| Corrugated Metal Pipe | | | |
| Concrete Pipe | | | |
| Reinforced Concrete Pipe | | | |
| Ductile Iron | | | |
| Polyvinyl Chloride | | | |
| Top of Asphalt | | | |
| Edge of Asphalt | | | |
| Centerline | | | |
| Flowline | | | |
| Finish Floor | | | |
| Top of Curb | | | |
| Top of Wall | | | |



Scale: 1" = 20'



Vicinity Map
(Not to Scale)

Northeast corner of Section 23, T5N, R2W, SLB&M, Found Brass Cap Monument in Center of Intersection in good Condition.

391.3' Rec. and Meas.
2648.36' Meas.

112.00'
1900 West Street
U.S. Highway 126
(UDOT Right of Way)

S 0°23'53" W (Basis of Bearings)

East Quarter corner of Section 23, T5N, R2W, SLB&M, Found Brass Cap Monument in Center of Intersection in good Condition.

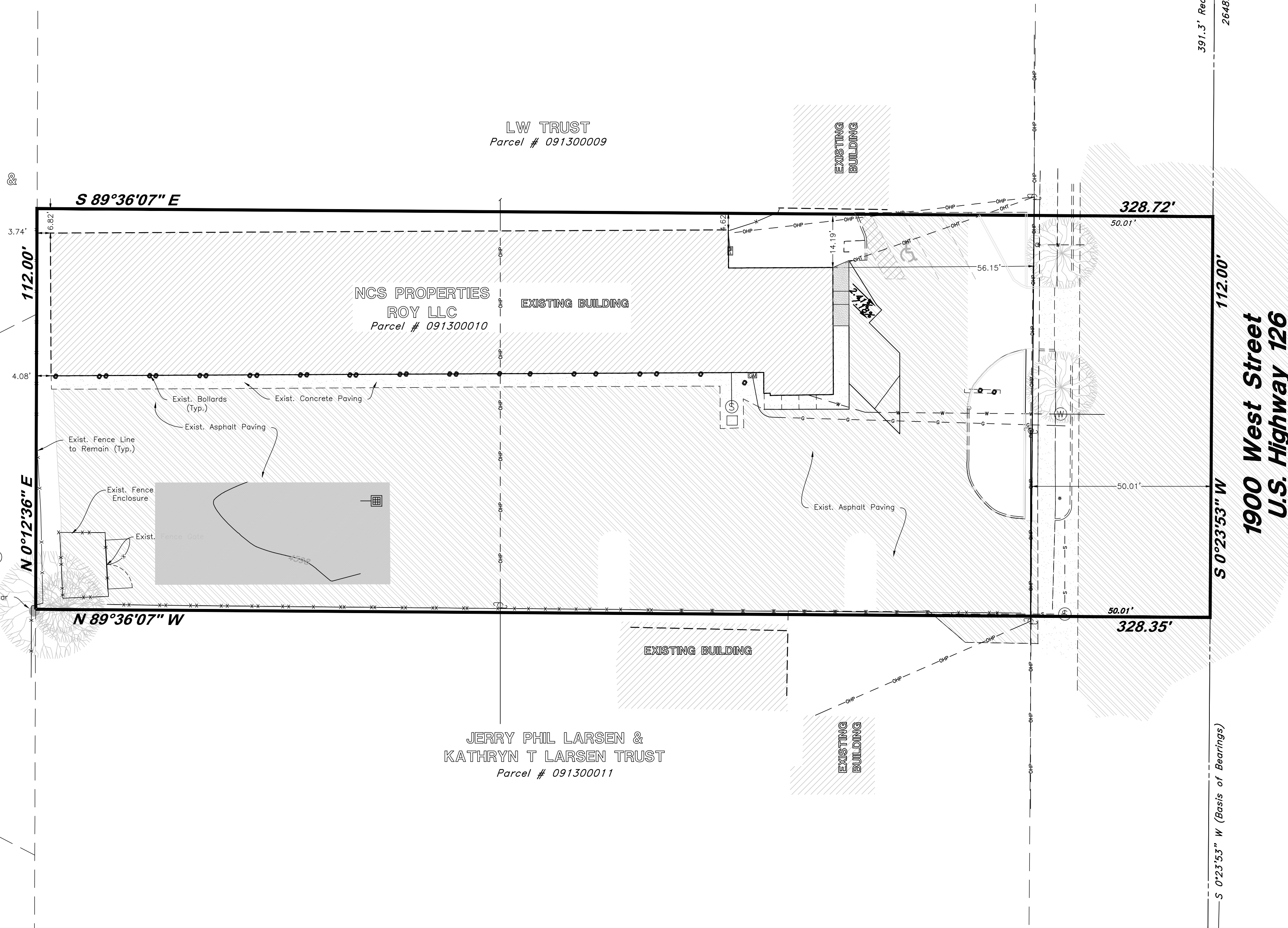
CONWAY, CODY L &
CLARISSA A
GIANNITRAPANI
Parcel # 091310004

RUNCHEL, DAVID
Parcel # 091310005

LW TRUST
Parcel # 091300009

NCS PROPERTIES
ROY LLC
Parcel # 091300010

JERRY PHIL LARSEN &
KATHRYN T LARSEN TRUST
Parcel # 091300011



NARRATIVE

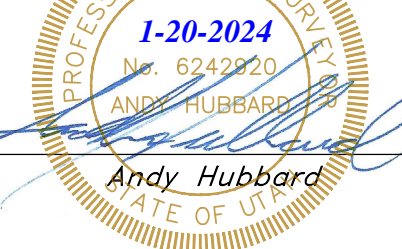
This Survey Nick Sorensen for the purpose of retacing the boundary of this parcel. Weber County Brass Cap Monuments were found at the Northeast and East Quarter corners of Section 23, T5N, R2W, Salt Lake Base and Meridian, U.S. Survey. A line bearing between these to monuments was used as the basis of bearings. The original description called for cardinal directions from the section corner, these were rotated to match the basis of bearings and matched the occupation of the parcel. The East boundary was placed along Section line, the West Right of Way line of 1900 West Street a UDOT Road is also shown for the usable area of the property after the "dedication by use" of the Road. The west Boundary was found to coincide with the East boundary line of Royset Park Annexation (Book 11 page 050). The North and South lines were held at record angles after rotation and distances were adjusted to match the Section line and East Boundary of Royset (1/64 distance). No new property corners were set at this time.

RECORD DESCRIPTION

Part of the Southeast Quarter of Section 23, Township 5 North, Range 2 West, Salt Lake Base and Meridian, U.S. Survey; Beginning at a point 391.3 Feet South from the Northeast Corner of said Quarter Section; thence West 20 Rods; thence South 112 Feet; thence East 20 Rods; thence North 112 Feet to the place of beginning. Contains 0.848± acres

SURVEYOR'S CERTIFICATE

I, Andy Hubbard do hereby certify that I am a Professional Land Surveyor, and that I hold Certificate No. 6242920, in accordance with Title 58, Chapter 22, of the Professional Engineers and Surveyors Licensing Act, and I have made a survey of the above described property according to Section 17-23-17 and that the above plat correctly shows the true dimensions of the property surveyed.



RECEIVED
SEPT 17 2024
FILE # 7886

GREAT BASIN ENGINEERING
5746 South 1475 East Ogden Utah 84403
Main (801)352-1515 Fax (801)392-7544
WWW.GREATBASINENGINEERING.COM

Record of Survey
NCS Roy Property
6051 South 1900 West
Roy City, Weber County, Utah
A part of Section 23, T5N, R2W, SLB&M, U.S. Survey

December 2023
SHEET NO.
ROS
23N709 -S3