

DRAIN TABLE

(POINT #2148)	(POINT #2186)
NOT SHOWN	T=4255.72
T=4255.04	FL=4251.57
24" RCP in S	10" PVC in W
15" RCP in W	10" PVC out N
24" RCP in E	(POINT #2189)
24" RCP out N	T=4254.54
(POINT #2112)	FL=4251.09
T=4255.24	10" PVC in S
FL=4255.09	10" PVC out NE
18" RCP out E	(POINT #2246)
(POINT #2058)	T=4254.52
T=4260.01	FL=4250.72
FL=4253.31	10" PVC in SW
24" RCP in N	10" PVC out NE
18" RCP in W	(POINT #2261)
24" RCP out E	T=4254.48
(POINT #2029)	FL=4250.28
T=4262.59	10" PVC in SE
FL=4255.04	10" PVC in SW
24" RCP in E	10" PVC out NE
24" RCP out W	(POINT #2204)
	T=4255.11
	FL=4250.07
	10" PVC in SW
	10" PVC out NE

STORM SEWER TABLE

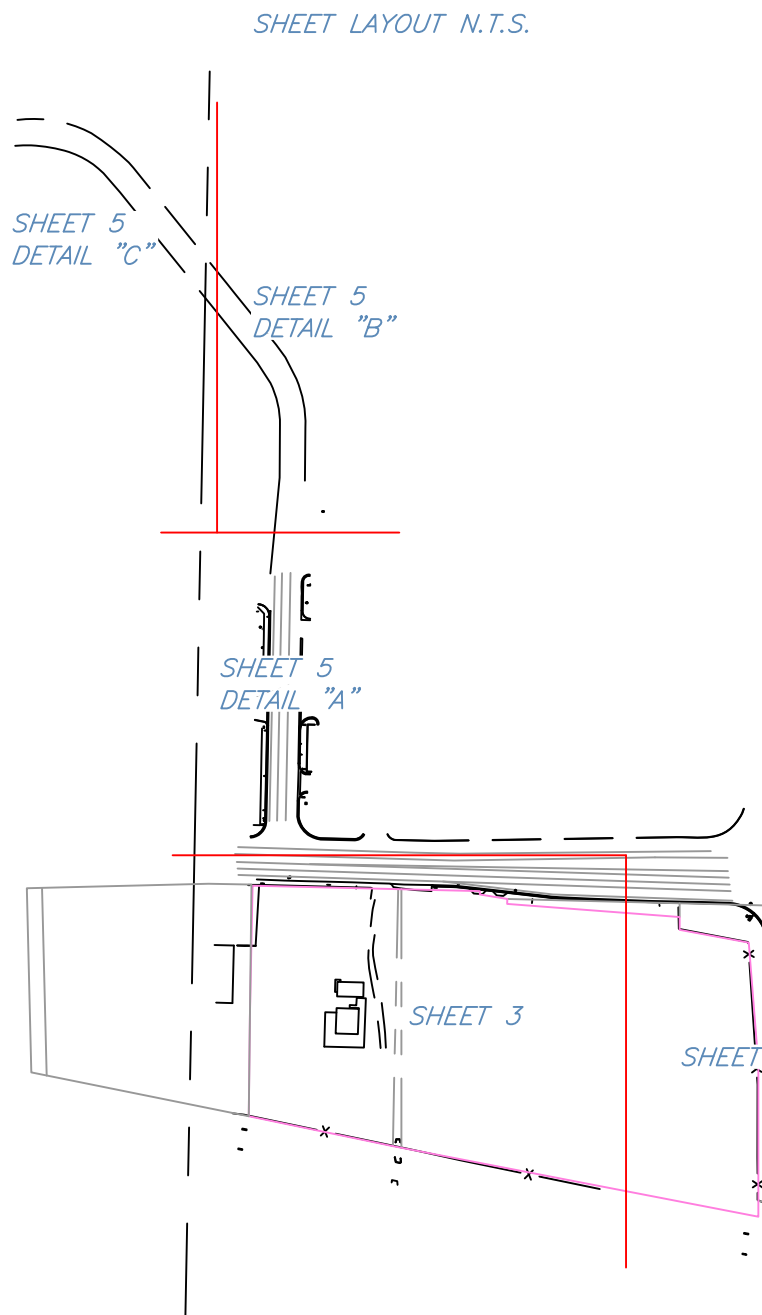
(POINT #2001)	(POINT #5287)
T=4264.61	FL=4246.35
FL=4258.21	15" RCP in W
24" RCP in E	20" RCP in S
24" RCP in S	20" RCP out N
24" RCP out W	

(POINT #5170)

T=4257.63
FL=4246.35
15" RCP in W
20" RCP in S
20" RCP out N

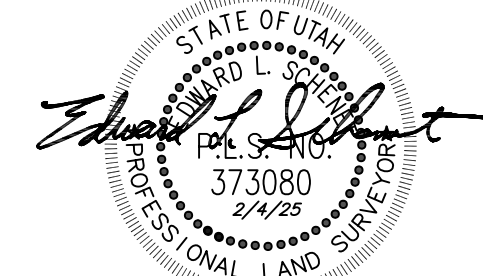
SURVEY LEGEND

○	Property Corner (Found)
●	Resolved Property Corner
⊕	R/W Monument Found
⊙	Benchmark
⊕	Utility Pedestal/Riser
⊕	Utility Pole
⊕	Utility Pole W/Transformer
⊕	Utility Pole W/Light
⊕	Guy Wire
⊕	Light Pole
⊕	Utility Valve (Plus Type)
⊕	Fire Hydrant
⊕	Single Post Sign
⊕	Double Post Sign
⊕	Utility Manhole
⊕	Traffic Arrows
⊕	Spot Elevation
⊕	Major Contour
⊕	Minor Contour
⊕	Curb & Gutter Elevation
⊕	Overhead Electric
⊕	Overhead Electric, Telephone and Cable
⊕	Water Line
⊕	Sanitary Sewer Line
⊕	Gas Line - Not Shown
⊕	Underground Telephone
⊕	Storm Sewer Line
⊕	Guardrail
⊕	Wire Fence
⊕	Center Line
⊕	Property R/W Line (OT Net)
⊕	Property R/W Lot Line (Others)
⊕	Curb Line
⊕	Edge Of Asphalt
⊕	Edge Of Concrete



TO QUIKTRIP CORPORATION, MANITAS INVESTMENTS, LLC, A UTAH LIMITED LIABILITY COMPANY, CHICAGO TITLE INSURANCE COMPANY:

THIS IS TO CERTIFY THAT THIS MAP OR PLAN AND THE SURVEY ON WHICH IT IS BASED WERE MADE IN ACCORDANCE WITH THE 2021 MINIMUM STANDARDS DETAIL REQUIREMENTS FOR ALTA/NSPS LAND TITLE SURVEYS, JOINTLY ESTABLISHED AND ADOPTED BY ALTA AND NSPS, AND INCLUDES ITEMS 1, 2, 3, 4, 5, 6, 7, 8, 9, 10, 11, 12, 13, 14, 15, 16, 17, 18, 19, 20, 21, 22, 23, 24, 25, 26, 27, 28 AND 29 OF TABLE A THEREOF. THE SURVEY WAS COMPLETED ON JUNE 20 & 21, 2023.



QuikTrip No. 7490

1663 W. 12TH ST.  
MARRIOTT-SLATERVILLE, UT.



© COPYRIGHT QUIKTRIP CORPORATION 2011  
ANY UNAUTHORIZED USE, REPRODUCTION,  
PUBLICATION, DISTRIBUTION, OR SALE IN  
WHOLE OR IN PART, IS STRICTLY FORBIDDEN.

PROTOTYPE: X  
DIVISION: X  
VERSION: X  
DESIGNED BY: JT  
DRAWN BY: JT  
REVIEWED BY: JAL

REV	DATE	DESCRIPTION
1	6/20/23	ADDED INFO
2	4/25/24	ADDED TITLE REPORT FROM PROPERTY TO THE WEST

SHEET TITLE:

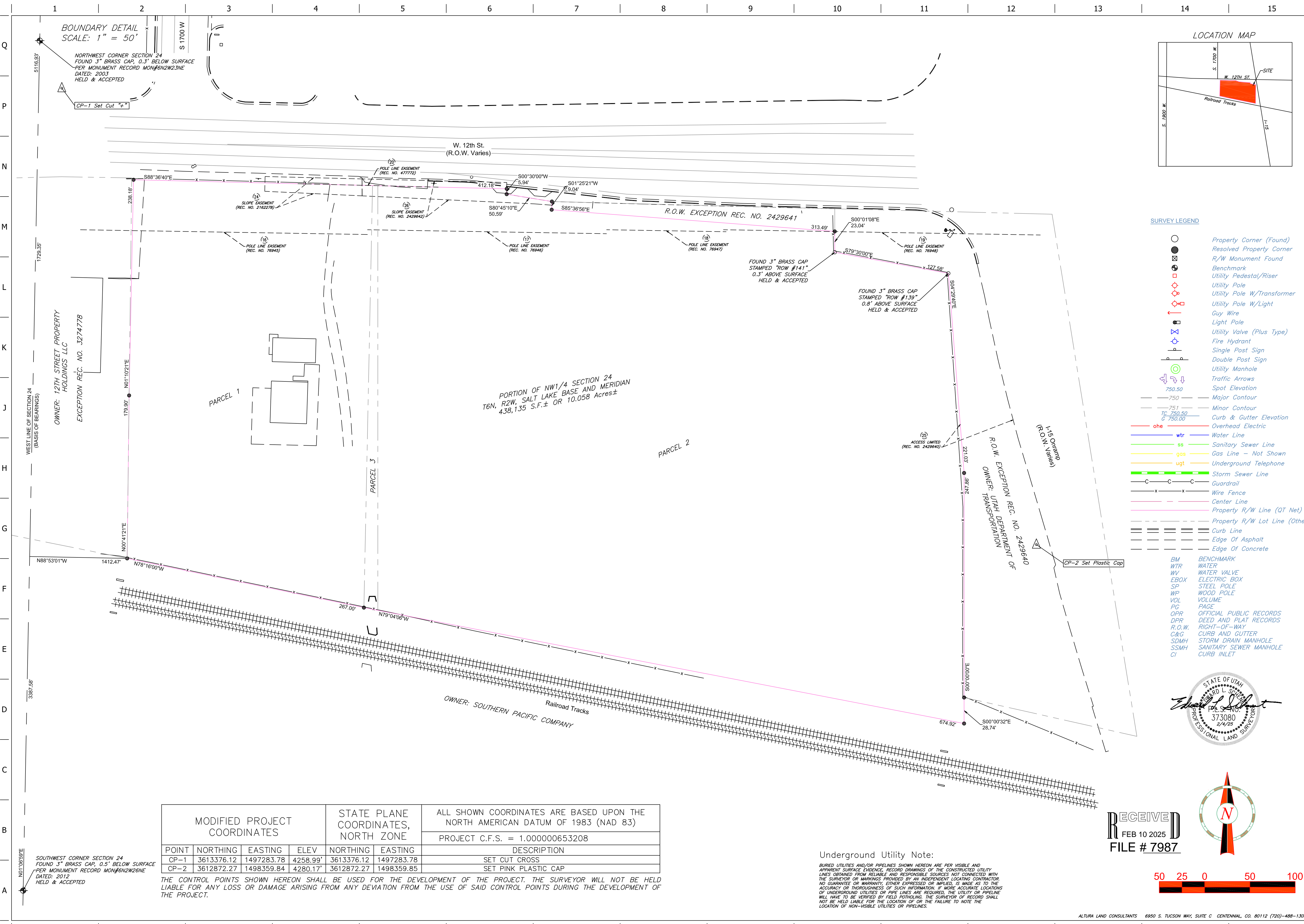
ALTA/NSPS LAND TITLE SURVEY

SHEET NUMBER:

C020

ORIGINAL ISSUE DATE: JUNE 28, 2023





Q  
P  
N  
M  
L  
K  
J  
H  
G  
F  
E  
D  
C  
B  
A

1  
2  
3  
4  
5  
6  
7  
8  
9  
10  
11  
12  
13  
14  
15

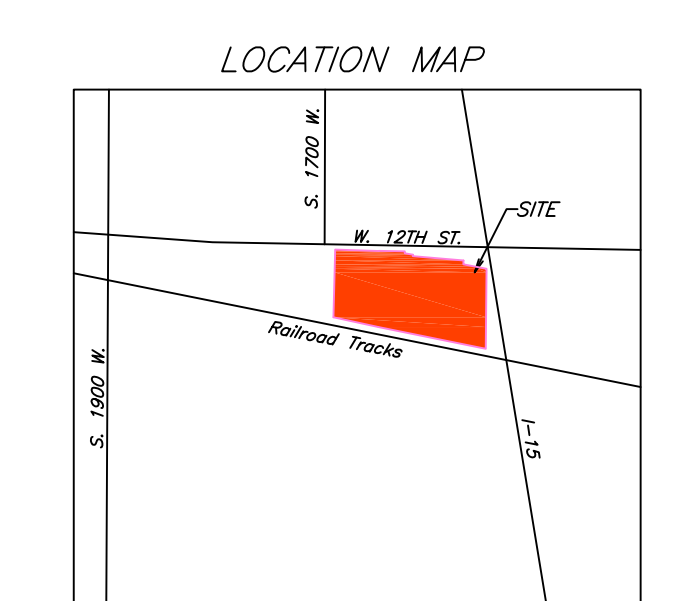
MODIFIED PROJECT COORDINATES				STATE PLANE COORDINATES, NORTH ZONE		ALL SHOWN COORDINATES ARE BASED UPON THE NORTH AMERICAN DATUM OF 1983 (NAD 83)
POINT	NORTHING	EASTING	ELEV	NORTHING	EASTING	
CP-1	3613376.12	1497283.78	4258.99'	3613376.12	1497283.78	DESCRIPTION
CP-2	3612872.27	1498359.84	4280.17'	3612872.27	1498359.85	SET CUT CROSS
						SET PINK PLASTIC CAP

THE CONTROL POINTS SHOWN HEREON SHALL BE USED FOR THE DEVELOPMENT OF THE PROJECT. THE SURVEYOR WILL NOT BE HELD LIABLE FOR ANY LOSS OR DAMAGE ARISING FROM ANY DEVIATION FROM THE USE OF SAID CONTROL POINTS DURING THE DEVELOPMENT OF THE PROJECT.

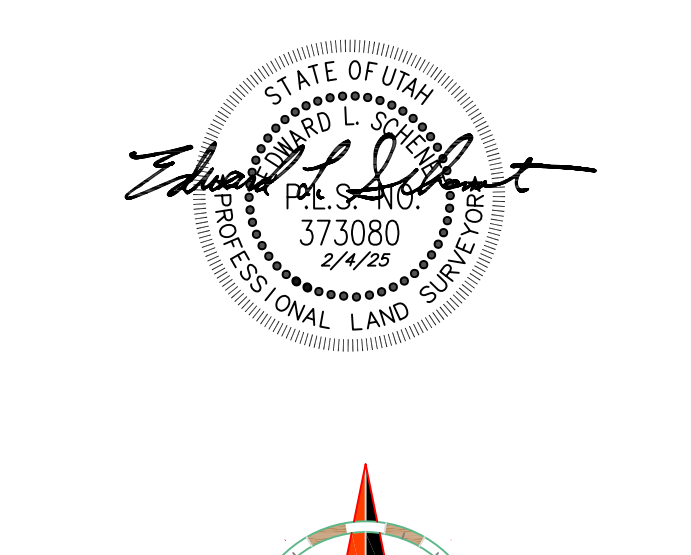
Underground Utility Note:  
BURIED UTILITIES AND/OR PIPELINES SHOWN HEREON ARE PER VISIBLE AND APPARENT SURFACE EVIDENCE, RECORD DRAWINGS OF THE CONSTRUCTED UTILITY LINES OBTAINED FROM RELIABLE AND RESPONSIBLE SOURCES, NOT CONNECTED WITH THE SURVEYOR OR MARKINGS PROVIDED BY AN INDEPENDENT LOCATING CONTRACTOR. NO GUARANTEE OR WARRANTY, EITHER EXPRESSED OR IMPLIED, IS MADE AS TO THE ACCURACY OR THOROUGHNESS OF SUCH INFORMATION. IF MORE ACCURATE LOCATIONS OF UNDERGROUND UTILITIES OR PIPE LINES ARE REQUIRED, THE UTILITY OR PIPELINE WILL HAVE TO BE VERIFIED BY FIELD POT-HOLING. THE SURVEYOR OF RECORD SHALL NOT BE HELD LIABLE FOR THE LOCATION OF OR THE FAILURE TO NOTE THE LOCATION OF NON-VISIBLE UTILITIES OR PIPELINES.

RECEIVED  
FEB 10 2025  
FILE # 7987

50 25 0 50 100



- SURVEY LEGEND**
- Property Corner (Found)
  - Resolved Property Corner
  - R/W Monument Found
  - Benchmark
  - Utility Pole
  - Utility Pole W/Transformer
  - Utility Pole W/Light
  - Guy Wire
  - Light Pole
  - Utility Valve (Plus Type)
  - Fire Hydrant
  - Single Post Sign
  - Double Post Sign
  - Utility Manhole
  - Traffic Arrows
  - Spot Elevation
  - Major Contour
  - Minor Contour
  - Curb & Gutter Elevation
  - Overhead Electric
  - Water Line
  - Sanitary Sewer Line
  - Gas Line - Not Shown
  - Underground Telephone
  - Storm Sewer Line
  - Guardrail
  - Wire Fence
  - Center Line
  - Property R/W Line (QT Net)
  - Property R/W Lot Line (Others)
  - Curb Line
  - Edge Of Asphalt
  - Edge Of Concrete
- BM BENCHMARK  
WTR WATER  
WV WATER VALVE  
EBOX ELECTRIC BOX  
SP STEEL POLE  
WP WOOD POLE  
VOL VOLUME  
PG PAGE  
OPR OFFICIAL PUBLIC RECORDS  
DPR DEED AND PLAT RECORDS  
R.O.W. RIGHT-OF-WAY  
C&G CURB AND GUTTER  
SDMH STORM DRAIN MANHOLE  
SSMH SANITARY SEWER MANHOLE  
CI CURB INLET



PROJECT NO.: 23081

**QuikTrip No. 7490**  
1663 W. 12TH ST.  
MARRIOTT-SLATERVILLE, UT.

**QT**

© 2011 QUIKTRIP CORPORATION  
ANY UNAUTHORIZED USE, REPRODUCTION, PUBLICATION, DISTRIBUTION, OR SALE IN WHOLE OR IN PART, IS STRICTLY FORBIDDEN.

PROTOTYPE: X  
DIVISION: X  
VERSION: X  
DESIGNED BY: X  
DRAWN BY: JT  
REVIEWED BY: JAL

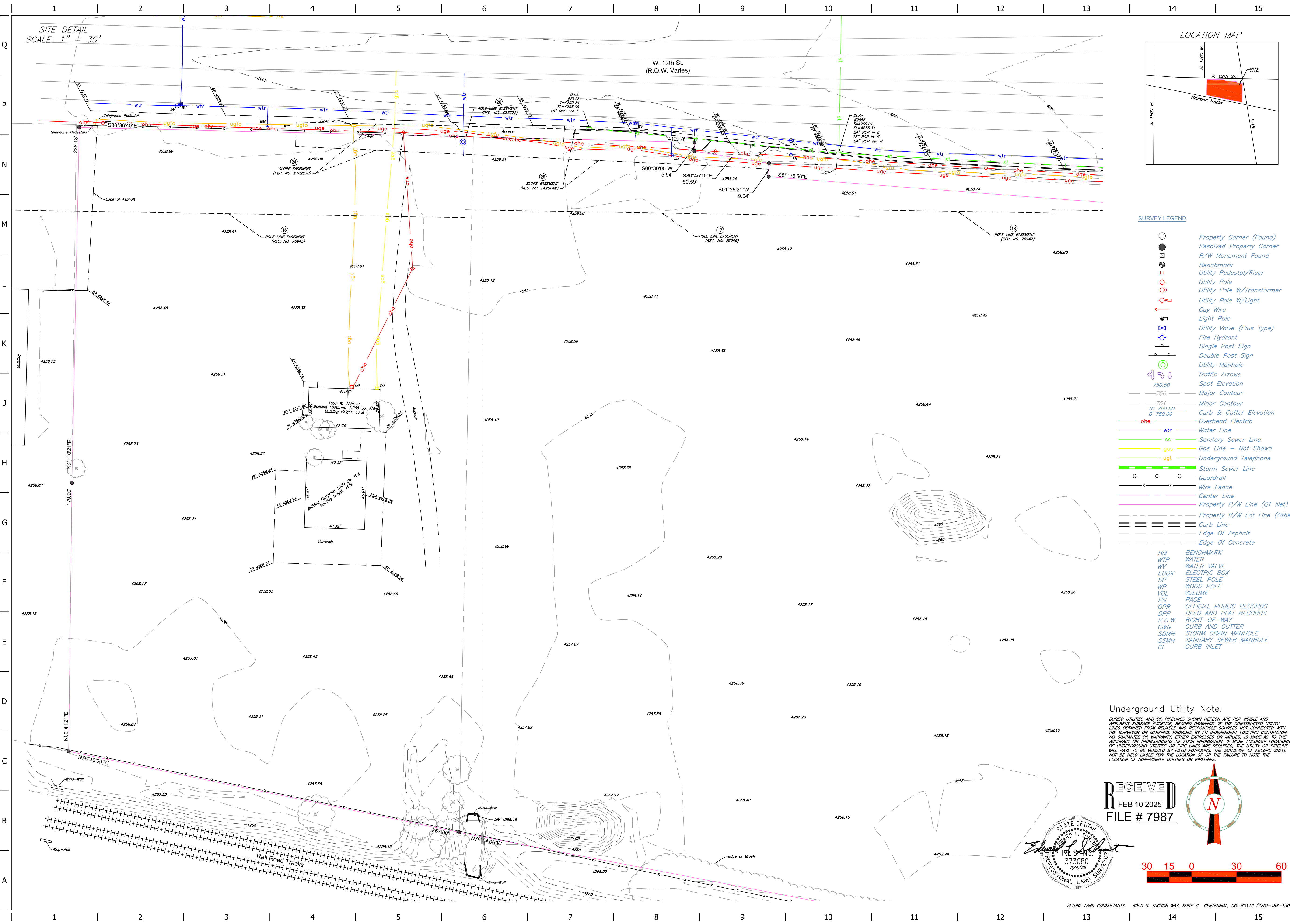
REV	DATE	DESCRIPTION
1	8/10/23	ADDED TYPED
2	4/25/24	ADDED TITLE REPORT FROM PROPERTY TO THE WEST

ORIGINAL ISSUE DATE: JUNE 28, 2023

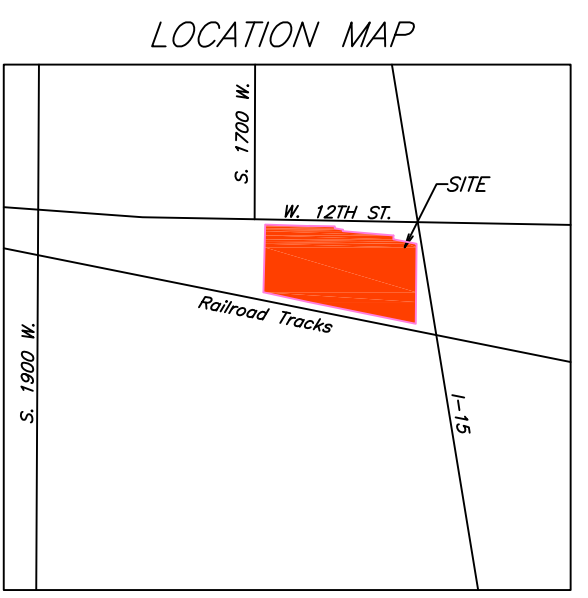
SHEET TITLE:  
ALT/NPS LAND TITLE  
SURVEY

SHEET NUMBER:  
**C021**





SITE DETAIL  
SCALE: 1" = 30'



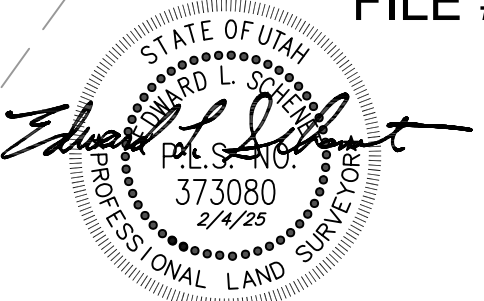
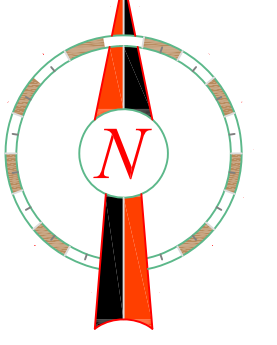
SURVEY LEGEND

- Property Corner (Found)
- Resolved Property Corner
- R/W Monument Found
- Benchmark
- Utility Pedestal/Riser
- Utility Pole
- Utility Pole W/Transformer
- Utility Pole W/Light
- Guy Wire
- Light Pole
- Utility Valve (Plus Type)
- Fire Hydrant
- Single Post Sign
- Double Post Sign
- Utility Manhole
- Traffic Arrows
- Spot Elevation
- Major Contour
- Minor Contour
- Curb & Gutter Elevation
- Overhead Electric
- Water Line
- Sanitary Sewer Line
- Gas Line - Not Shown
- Underground Telephone
- Storm Sewer Line
- Guardrail
- Wire Fence
- Center Line
- Property R/W Line (QT Net)
- Property R/W Lot Line (Others)
- Curb Line
- Edge Of Asphalt
- Edge Of Concrete
- BM BENCHMARK
- WTR WATER
- WV WATER VALVE
- EBOX ELECTRIC BOX
- SP STEEL POLE
- WP WOOD POLE
- VOL VOLUME
- PG PAGE
- OPR OFFICIAL PUBLIC RECORDS
- OPR DEED AND PLAT RECORDS
- R.O.W. RIGHT-OF-WAY
- C&G CURB AND GUTTER
- SDMH STORM DRAIN MANHOLE
- SSMH SANITARY SEWER MANHOLE
- CI CURB INLET

Underground Utility Note:

BURIED UTILITIES AND/OR PIPELINES SHOWN HEREON ARE PER VISIBLE AND APPARENT SURFACE EVIDENCE, RECORD DRAWINGS OF THE CONSTRUCTED UTILITY LINES OBTAINED FROM RELIABLE AND RESPONSIBLE SOURCES NOT CONNECTED WITH THE SURVEYOR OR MARRIOTT SLATERVILLE, UT. NO GUARANTEE OR WARRANTY, EITHER EXPRESSED OR IMPLIED, IS MADE AS TO THE ACCURACY OR THOROUGHNESS OF SUCH INFORMATION. IF MORE ACCURATE LOCATIONS OF UNDERGROUND UTILITIES OR PIPELINES ARE REQUIRED, THE UTILITY OR PIPELINE WILL HAVE TO BE VERIFIED BY FIELD POT-HOLING. THE SURVEYOR OF RECORD SHALL NOT BE HELD LIABLE FOR THE LOCATION OF OR THE FAILURE TO NOTE THE LOCATION OF NON-VISIBLE UTILITIES OR PIPELINES.

RECEIVED  
FEB 10 2025  
FILE # 7987



PROJECT NO.: 23081

QuikTrip No. 7490  
1663 W. 12TH ST.  
MARRIOTT-SLATERVILLE, UT.



© COPYRIGHT QUIKTRIP CORPORATION 2011  
ANY UNAUTHORIZED USE, REPRODUCTION,  
PUBLICATION, DISTRIBUTION, OR SALE IN  
WHOLE OR IN PART, IS STRICTLY FORBIDDEN.

PROTOTYPE:	X
DIVISION:	X
VERSION:	X
DESIGNED BY:	X
DRAWN BY:	JT
REVIEWED BY:	JAL

REV	DATE	DESCRIPTION
1	8/10/23	44853 DTD
2	4/25/24	44853 FILE REPORT FROM PROPERTY TO THE WEST

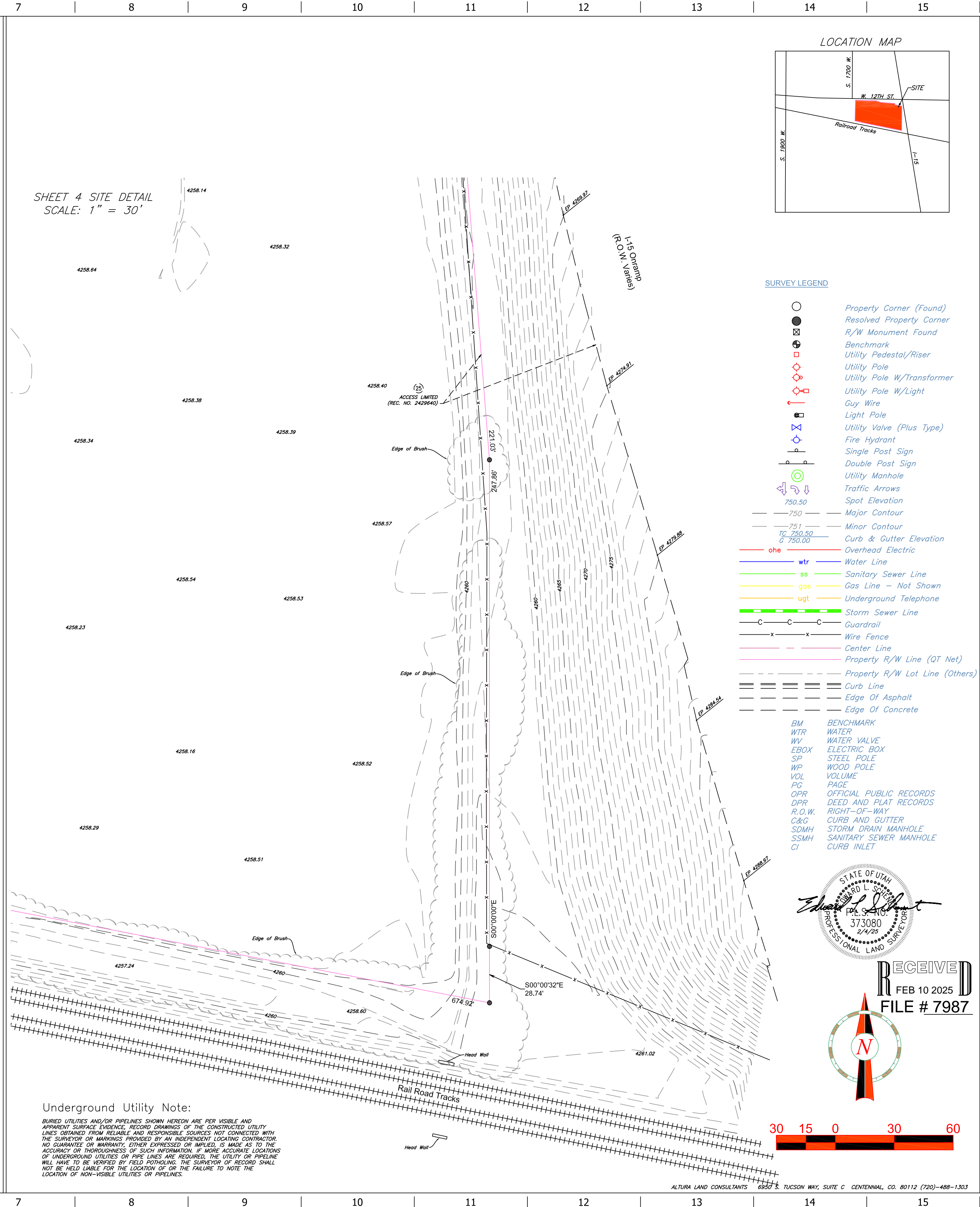
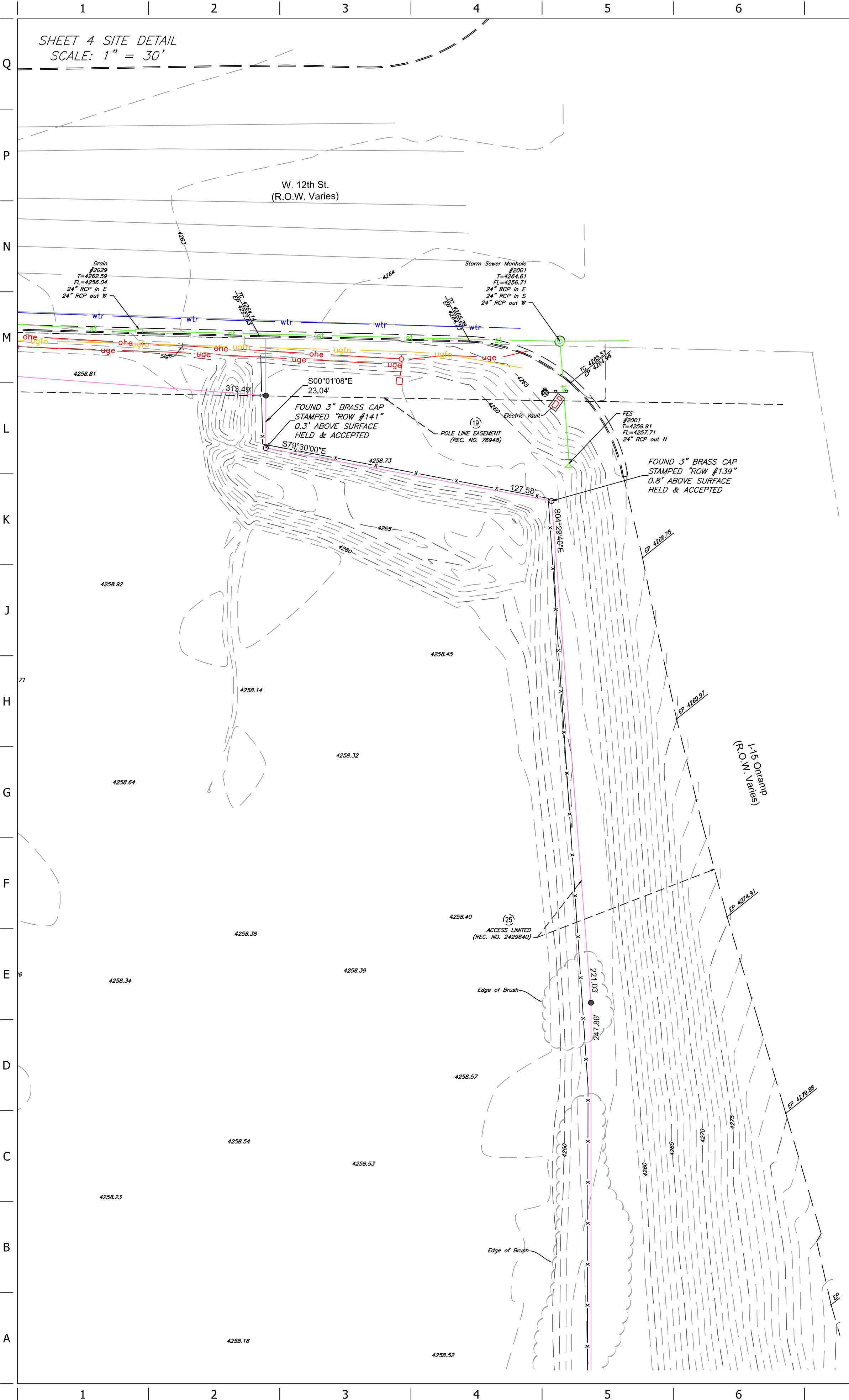
ORIGINAL ISSUE DATE: JUNE 28, 2023

SHEET TITLE:  
ALT/NPS LAND TITLE  
SURVEY

SHEET NUMBER:

C022





PROJECT NO.: 23081

**QuikTrip No. 7490**  
1663 W. 12TH ST.  
MARRIOTT-SLATERVILLE, UT.

**QU**

© COPYRIGHT QUIKTRIP CORPORATION 2011  
ANY UNAUTHORIZED USE, REPRODUCTION,  
PUBLICATION, DISTRIBUTION, OR SALE IN  
WHOLE OR IN PART, IS STRICTLY FORBIDDEN.

PROTOTYPE: X  
DIVISION: X  
VERSION: X  
DESIGNED BY: X  
DRAWN BY: JT  
REVIEWED BY: JAL

REV	DATE	DESCRIPTION
1	6/10/23	AKS: DTD
2	4/25/24	AKS: TITLE REPORT FROM PROPERTY TO THE WEST

ORIGINAL ISSUE DATE: JUNE 28, 2023

SHEET TITLE:  
ALTANSPS LAND TITLE  
SURVEY

SHEET NUMBER:  
**C023**



