

DRAWING NUMBER
000801

DRAWING NUMBER
000801

DRAWING NUMBER
000801

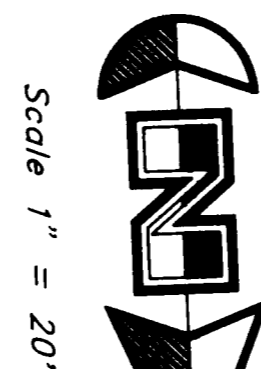
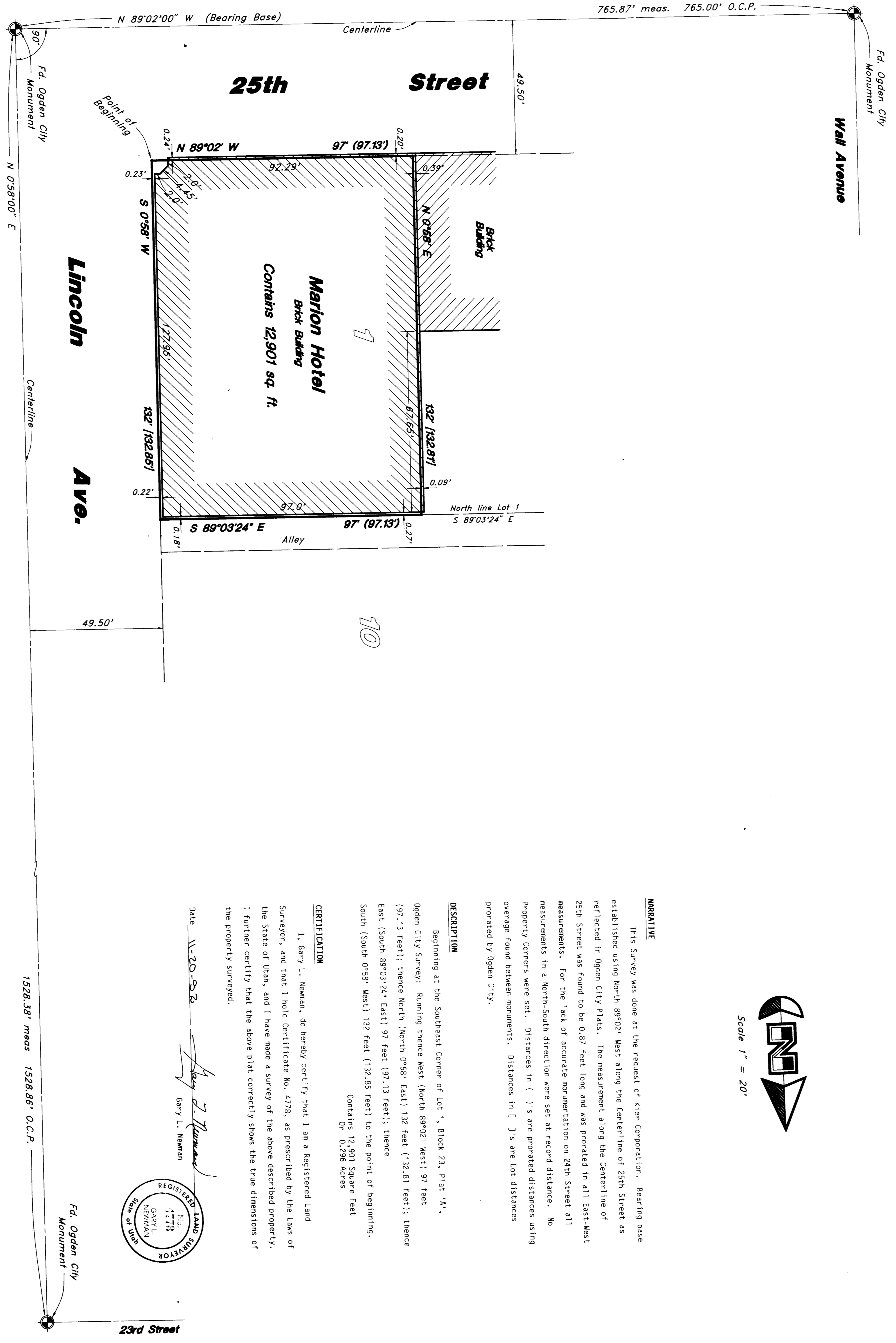
DRAWING NUMBER
000801

PLAN HOLD CORPORATION • IRVINE, CALIFORNIA

PLAN HOLD CORPORATION • IRVINE, CALIFORNIA

PLAN HOLD CORPORATION • IRVINE, CALIFORNIA

PLAN HOLD CORPORATION • IRVINE, CALIFORNIA



NARRATIVE

This Survey was done at the request of Kier Corporation. Bearing base established using North 89°02' West along the centerline of 25th Street as reflected in Ogdan City Plats. The measurement along the Centerline of 25th Street was found to be 0.87 feet long and was provided in all East-West measurements. For the lack of accurate monumentation on 24th Street all measurements in a North-South direction were set at record distance. No property corners were set. Distances in []'s are prorated distances using overage found between monuments. Distances in []'s are lot distances provided by Ogdan City.

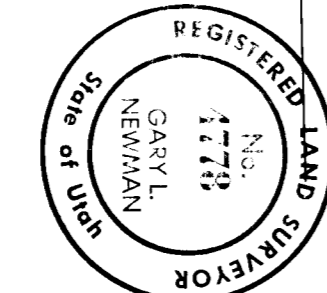
DESCRIPTION

Beginning at the Southeast corner of Lot 1, Block 23, Plat 'A', Ogdan City Survey; Running thence West (North 89°02' West) 97 feet (97.13 feet); thence North (North 0°58' East) 132 feet (132.81 feet); thence East (South 89°03'24\"/>

CERTIFICATION

I, Gary L. Neman, do hereby certify that I am a Registered Land Surveyor, and that I hold Certificate No. 4778, as prescribed by the Laws of the State of Utah, and I have made a survey of the above described property. I further certify that the above plat correctly shows the true dimensions of the property surveyed.

Date: 11-20-82
 Gary L. Neman
 Registered Land Surveyor
 No. 4778
 Gary L. Neman
 State of Utah



1528.38' meas. 1528.86' O.C.P.

Fd. Ogdan City Monument

23rd Street

Marion Hotel
 A Part of Lot 1, Block 23, Plat "A", Ogdan City Survey
 Located in the South 1/2 of Section 29, T8N, R1W, S18&M

Property Survey
 for
Kier Corporation

GREAT BASIN ENGINEERING, INC.
 CONSULTING ENGINEERS AND SURVEYORS
 3444 Lincoln Avenue, Ogdan, Utah 84401
 Phone: 801-224-4411 Fax: 801-224-4411

DATE: Nov. 11, 1982
 DRAWN BY: [Signature]
 CHECKED BY: [Signature]
 SCALE: 1" = 20'

RECEIVED
 DEC 22 1982
 Weber-Cromley Survey

000801