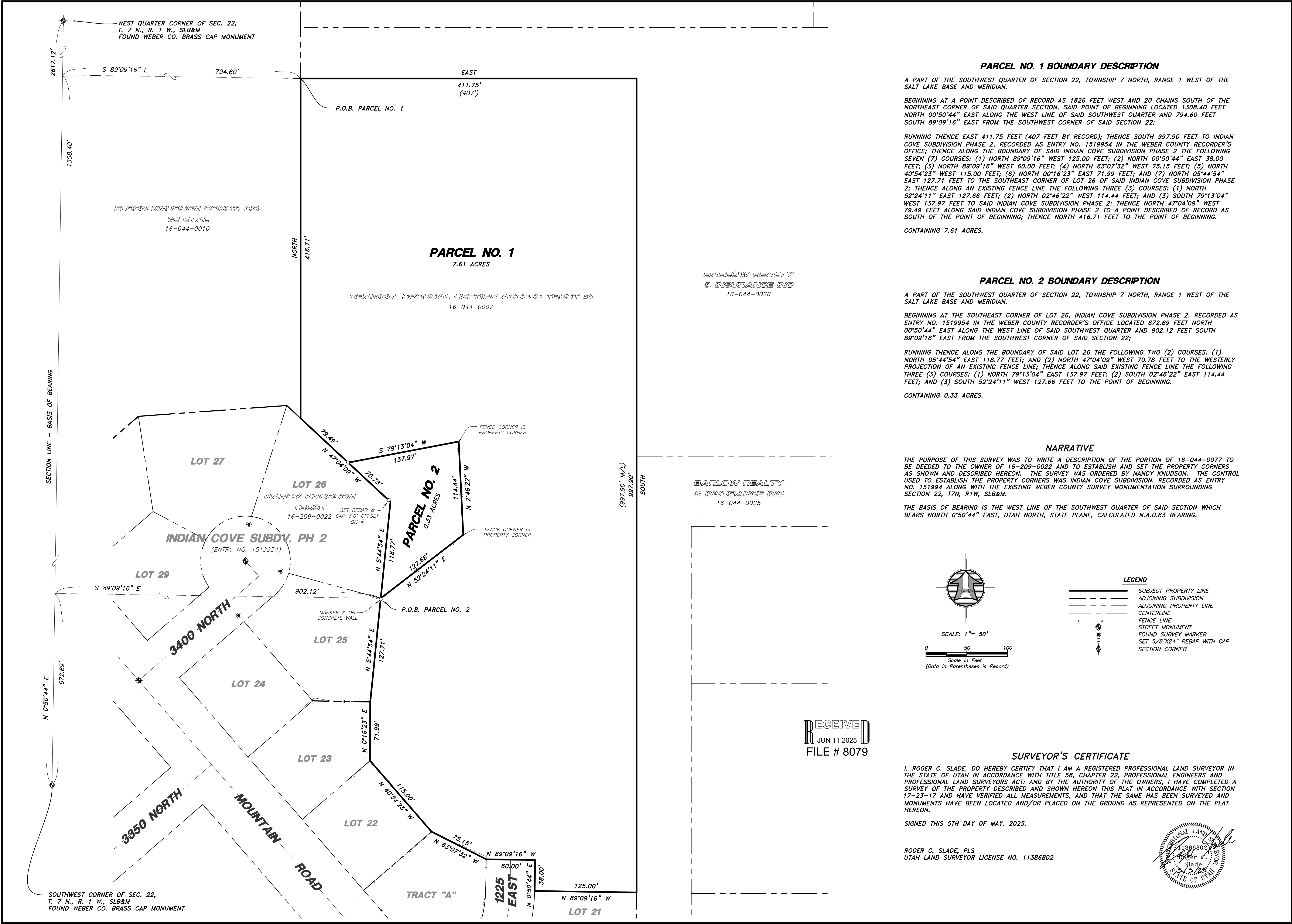


N:\2025\25-3-77 Nancy Knudson\Drawings\25-3-77\19.dwg, 5/5/2025 6:19:31 AM, DWG To PDF.pc3



Drawn By: RS		Date: 04/30/2025	
Designed By: JRP			
Checked By: JRP			
Approved By: JRP			
Scale: 1" = 50'			
Drawing File: 25-3-77\19.dwg			
JOB NUMBER: 25-3-77			

PROPERTY SURVEY FOR

NANCY KNUDSON

NORTH OGDEN, WEBER COUNTY, UTAH

A PART OF THE SOUTHWEST QUARTER OF SECTION 22,
TOWNSHIP 7 NORTH, RANGE 1 WEST, S.L.B.&M.

Sheet	1
of	1
Sheets	

HAI

HANSEN & ASSOCIATES, INC.
Consulting Engineers and Land Surveyors
538 North Main Street, Brigham, Utah 84302
Visit us at www.hai.net
Logan
Ogden
Brigham City
(435) 723-3491 (801) 399-4905 (435) 952-8272
Celebrating over 68 Years of Business