

DRAWING NUMBER
000880

PLAN HOLD CORPORATION • IRVINE, CALIFORNIA
REORDER BY NUMBER 075AR

DRAWING NUMBER
000880

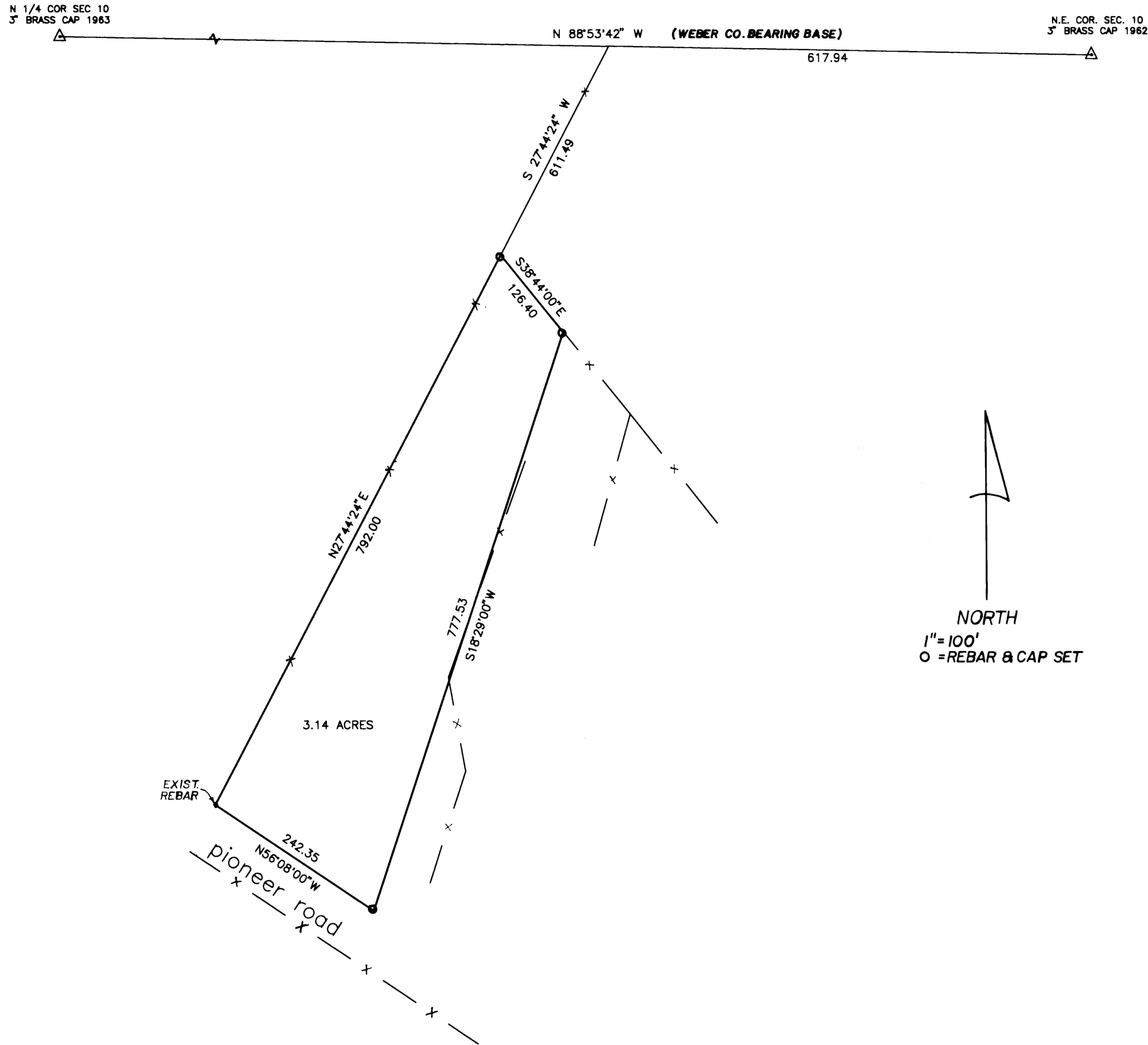
PLAN HOLD CORPORATION • IRVINE, CALIFORNIA
REORDER BY NUMBER 075AR

DRAWING NUMBER
000880

PLAN HOLD CORPORATION • IRVINE, CALIFORNIA
REORDER BY NUMBER 075AR

DRAWING NUMBER
000880

PLAN HOLD CORPORATION • IRVINE, CALIFORNIA
REORDER BY NUMBER 075AR



I, DALLAS K. BUTTARS, A REGISTERED LAND SURVEYOR AS PRESCRIBED BY THE LAWS OF THE STATE OF UTAH, AND HOLDING LICENSE NUMBER 6985, HEREBY CERTIFY THAT I HAVE MADE A SURVEY OF THE BELOW DESCRIBED PROPERTY AND THAT THE PLAT HEREON IS TRUE AND CORRECT REPRESENTATION OF SAID PROPERTY.

Dallas K. Buttars
8-2-93



NARRATIVE

THE PURPOSE OF THIS SURVEY WAS TO DETERMINE THE BOUNDARY. THE DESCRIPTION WAS A REMAINDER FROM A PARENT DESCRIPTION WITH REFERENCE TO TWO DEEDS; BOOK 1037 PAGE 2 AND BOOK 1022 PAGE 70 OF WEBER COUNTY RECORDS. THIS IS THE REMAINING PROPERTY DETERMINED BY MY SURVEY. THE CALL TO THE CANAL HAS BEEN LEFT OUT DO TO A RECENT COURT CASE ON THIS DESCRIPTION.

DESCRIPTION

A PART OF THE NORTHEAST QUARTER OF SECTION 10, TOWNSHIP 6 NORTH, RANGE 2 WEST, SALT LAKE BASE AND MERIDIAN: BEGINNING AT A POINT NORTH 88°53'42" WEST 617.94 FEET AND SOUTH 27°44'24" WEST 1403.70 FEET ON THE NORTH RIGHT OF WAY OF PIONEER ROAD AND RUNNING THENCE NORTH 27°44'24" EAST 792.0 FEET, THENCE SOUTH 38°44' EAST 126.40 FEET, THENCE SOUTH 18°29' WEST 777.53 FEET TO THE NORTH RIGHT OF WAY OF PIONEER ROAD, THENCE NORTH 56°08' WEST 242.35 FEET ALONG SAID ROAD TO THE POINT OF BEGINNING. CONTAINS 3.14 ACRES

RECEIVED
OCT 4 1993
Weber County Surveyor

N.E. 1/4 SEC. 10, T. 6 N. R. 2 W.
FOR: DENNIS HUMPHRIES
DATE: 8-2-93
BY: BUTTARS SURVEYING