

DRAWING NUMBER

000904

PLAN HOLD CORPORATION • IRVINE, CALIFORNIA

REORDER BY NUMBER 075AR

POSITION EDGE OF PRINT ON THIS LINE

DRAWING NUMBER

000904

PLAN HOLD CORPORATION • IRVINE, CALIFORNIA

REORDER BY NUMBER 075AR

POSITION EDGE OF PRINT ON THIS LINE

DRAWING NUMBER

000904

PLAN HOLD CORPORATION • IRVINE, CALIFORNIA

REORDER BY NUMBER 075AR

POSITION EDGE OF PRINT ON THIS LINE

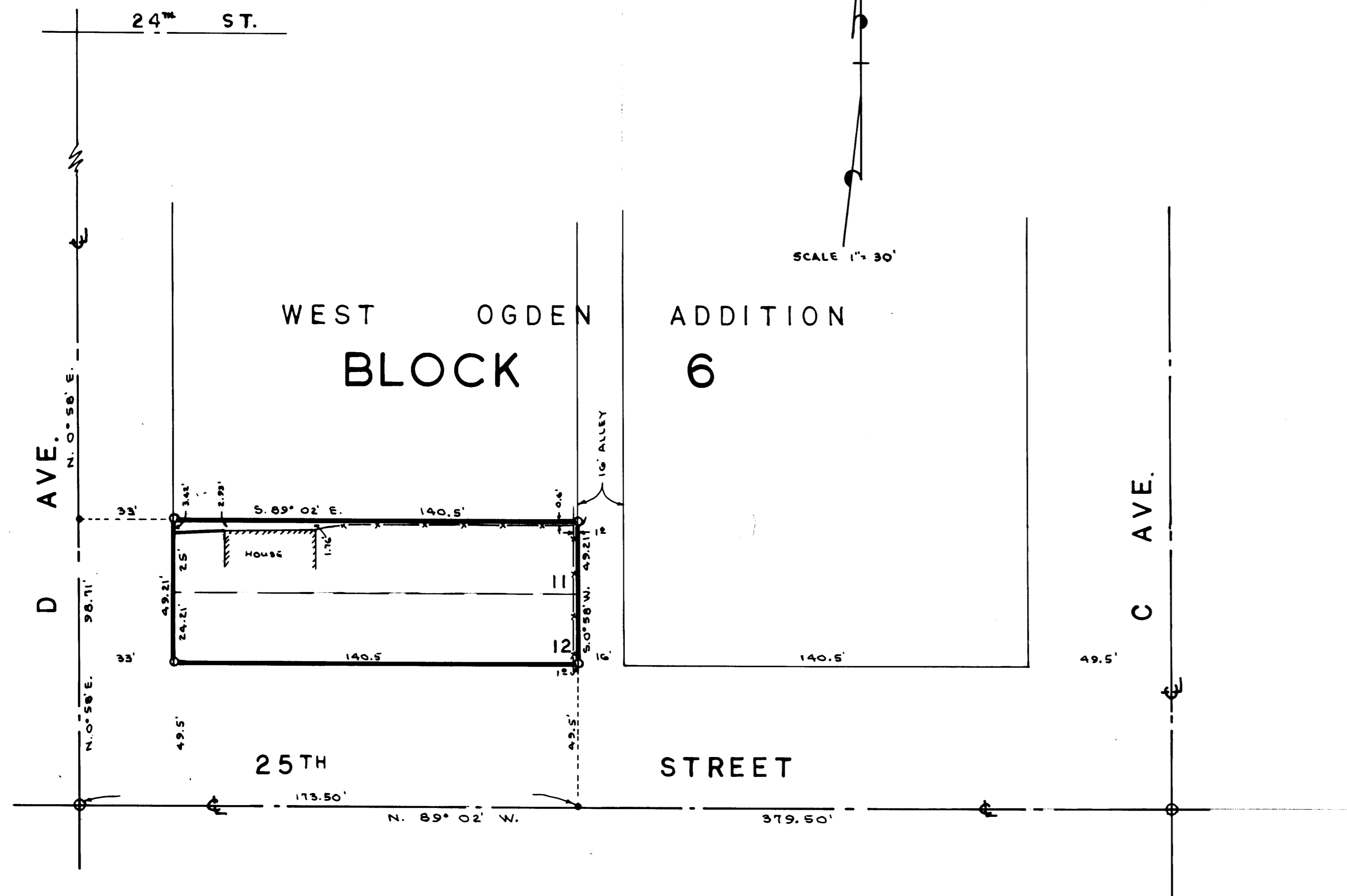
DRAWING NUMBER

000904

PLAN HOLD CORPORATION • IRVINE, CALIFORNIA

REORDER BY NUMBER 075AR

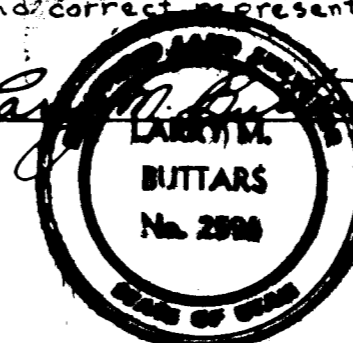
POSITION EDGE OF PRINT ON THIS LINE



SURVEYORS CERTIFICATE

I, Larry M. Buttars, a registered Land Surveyor as prescribed by the laws of the State of Utah, and holding licence No. 2596, do hereby certify that I made a survey of the below described property and the Plat hereon is a true and correct representation of said survey.

Date: 10-1-93 Sign: *Larry M. Buttars*



DESCRIPTION

All of Lots 11 and 12, Block 6, West Ogden Addition to Ogden City, Weber County, Utah, according to the official plat thereof.

NARRATIVE

The purpose of this Survey was to locate encroachments and identify property boundaries.
Basis of Bearings: Ogden City Platted bearings of record.

RECEIVED

OCT 20 1993

Weber County Surveyor

LEGEND

- o Set 3/4" x 24" re-bar with plastic cap stamped L. Buttars R.L.S. 2596
- Set P.K. nail with ribbon

BUTTARS SURVEYING

1015 26th STREET OGDEN, UT. 84401
PHONE 392-5291

CLIENT: JACOB MARTINEZ

SURVEY LOCATION:
S.E. 1/4 SEC. 30, T. 6 N., R. 1 W., S.L.B. & M.
WEST OGDEN ADD'N. TO OGDEN CITY

SURVEY DATE: 9-25-93

000904