

DRAWING NUMBER
000906

PLAN HOLD CORPORATION • IRVINE, CALIFORNIA
REORDER BY NUMBER 0754R
POSITION EDGE OF PRINT ON THIS LINE

DRAWING NUMBER
000906

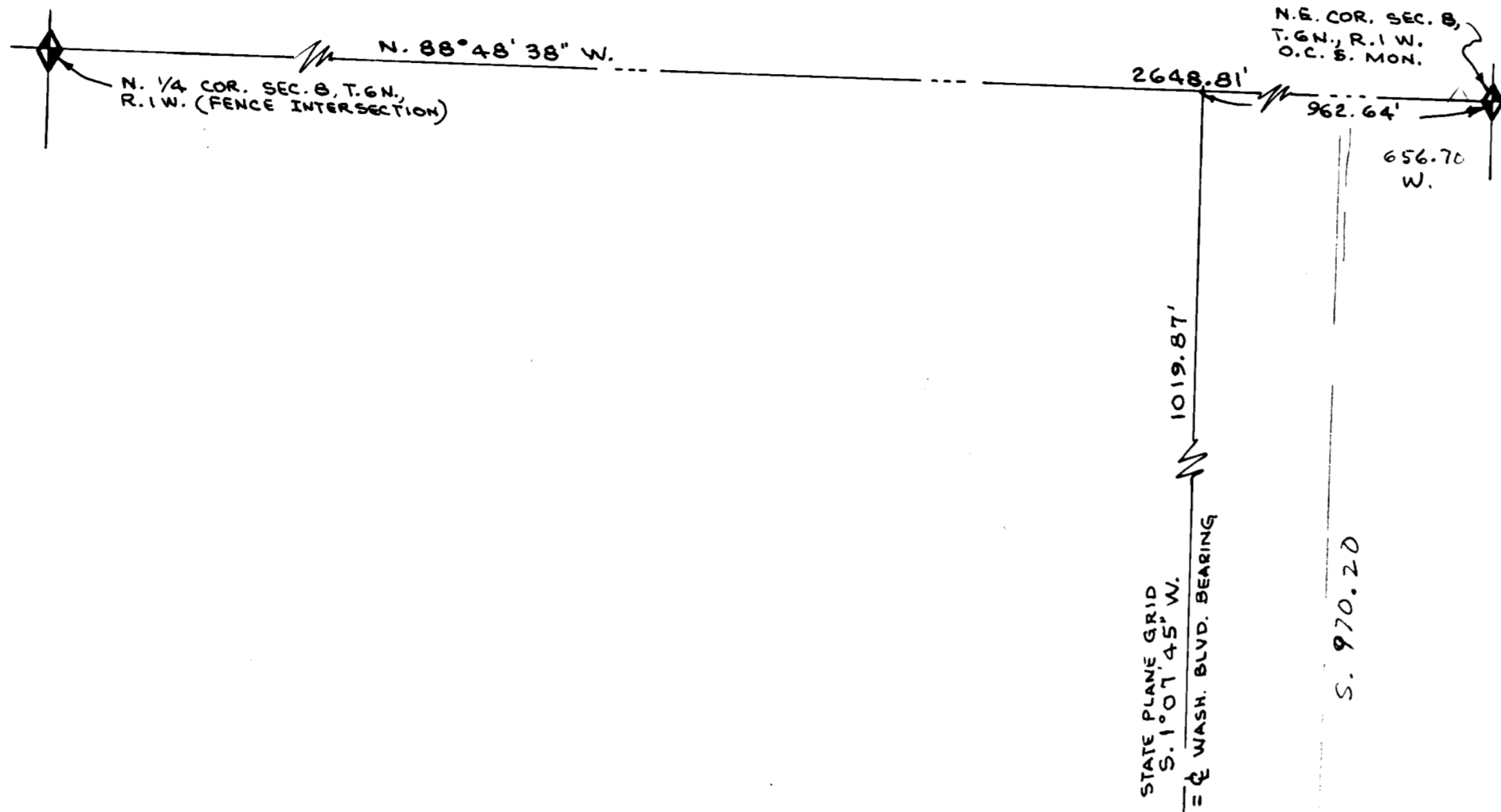
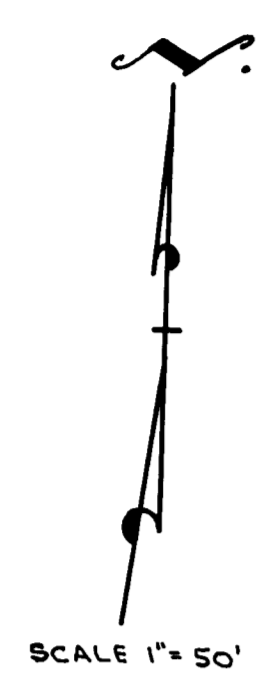
PLAN HOLD CORPORATION • IRVINE, CALIFORNIA
REORDER BY NUMBER 0754R
POSITION EDGE OF PRINT ON THIS LINE

DRAWING NUMBER
000906

PLAN HOLD CORPORATION • IRVINE, CALIFORNIA
REORDER BY NUMBER 0754R
POSITION EDGE OF PRINT ON THIS LINE

DRAWING NUMBER
000906

PLAN HOLD CORPORATION • IRVINE, CALIFORNIA
REORDER BY NUMBER 0754R
POSITION EDGE OF PRINT ON THIS LINE



SURVEYORS CERTIFICATE

I, Larry M. Buttars, a registered Land Surveyor as prescribed by the laws of the State of Utah, and holding licence No. 2596, do hereby certify that I made a survey of the below described property and the Plat hereon is a true and correct representation of said survey.

Date: 9-18-93 Sign: *Larry M. Buttars*



DESCRIPTION

PARCEL 1
Part of the N.E. 1/4 of Section 8, T. 6 N., R. 1 W., S.L.B. & M., U.S. Survey: Beginning on the North line of Larsen Lane at the South line of canal, said point of beginning being N. 88° 48' 38" W. along the section line 962.64 ft. and S. 1° 01' 45" W. (parallel with Washington Blvd.) 1019.87 ft. from the O.C.S. Mon. at the N.E. cor. of said Section 8, and running thence S. 60° 36' W. along the North line of Larsen Lane 262.21 ft., thence N. 23° 30' W. 135.56 ft. to the South line of canal, thence along canal N. 86° 40' 46" E. 149.00 ft., N. 84° 13' 40" E. 99.26 ft. and S. 67° 54' E. 31.76 ft. to the point of beg. Contains 13,446 Sq. ft., 0.446 Ac.

PARCEL 2
Part of the N.E. 1/4 of Section 8, T. 6 N., R. 1 W., S.L.B. & M., U.S. Survey: Beginning at a point on the North line of Larsen Lane, N. 88° 48' 38" W. along the Section line 962.64 ft., S. 1° 01' 45" W. (parallel with Washington Blvd.) 1019.87 ft. and S. 60° 36' W. 262.21 ft. (along the North line of Larsen Lane) from the O.C.S. Mon. at the N.E. corner of said Section 8, and running thence S. 60° 36' W. 105.00 ft., thence N. 23° 30' W. 135.56 ft. to the South line of canal, thence N. 85° 46' E. along canal 110.64 ft., thence S. 23° 30' E. 137.28 ft. to the point of beginning. Contains 17,275 Sq. ft., 0.397 Ac.

NARRATIVE

The purpose of this Survey was to divide out parcels with existing houses from parent parcel. Basis of bearings: N. 88° 48' 38" W. along the North line of N.E. 1/4 of Sec. 8, state plane Grid.

RECEIVED
OCT 20 1993
Weber County Surveyor

- ### LEGEND
- Set 3/8" x 24" re-bar with plastic cap stamped L. Buttars R.L.S. 2596
 - Set P.K. nail with ribbon

BUTTARS SURVEYING
1815 26th STREET OGDEN, UT. 84401
PHONE 392-5231

CLIENT: AL OSTRUP

SURVEY LOCATION:
N.E. 1/4 SEC. 8, T. 6 N., R. 1 W., S.L.B. & M.
HARRISVILLE CITY, WEBER COUNTY, UT.

SURVEY DATE: 9-11-93