

DRAWING NUMBER  
000907

DRAWING NUMBER  
000907

DRAWING NUMBER  
000907

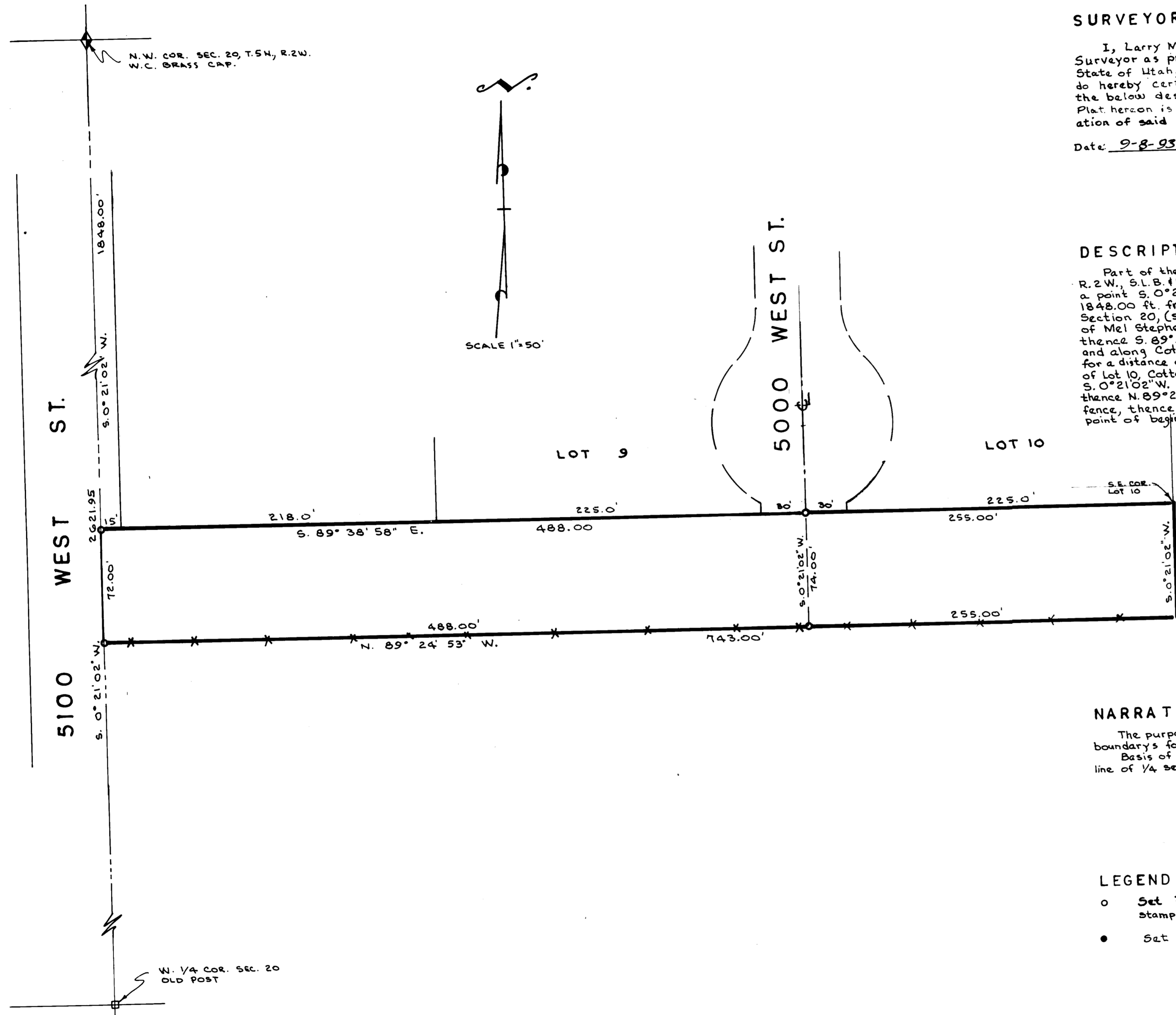
DRAWING NUMBER  
000907

PLAN HOLD CORPORATION • IRVINE, CALIFORNIA  
REORDER BY NUMBER 075AR  
POSITION EDGE OF PRINT ON THIS LINE

PLAN HOLD CORPORATION • IRVINE, CALIFORNIA  
REORDER BY NUMBER 075AR  
POSITION EDGE OF PRINT ON THIS LINE

PLAN HOLD CORPORATION • IRVINE, CALIFORNIA  
REORDER BY NUMBER 075AR  
POSITION EDGE OF PRINT ON THIS LINE

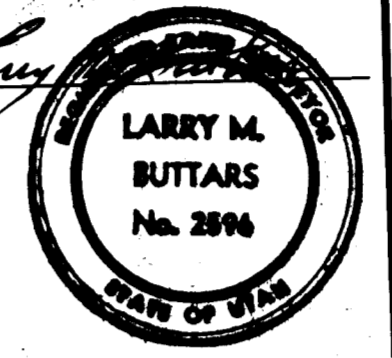
PLAN HOLD CORPORATION • IRVINE, CALIFORNIA  
REORDER BY NUMBER 075AR  
POSITION EDGE OF PRINT ON THIS LINE



**SURVEYORS CERTIFICATE**

I, Larry M. Buttars, a registered Land Surveyor as prescribed by the laws of the State of Utah, and holding licence No. 2596, do hereby certify that I made a survey of the below described property and the Plat hereon is a true and correct representation of said survey.

Date: 9-8-93 Sign: Larry M. Buttars



**DESCRIPTION**

Part of the N.W. 1/4 of Section 20, T.5N, R.2W, S.1.B.1M, U.S. Survey: Beginning at a point  $S. 0^{\circ} 21' 02'' W.$  along the Section line  $1848.00'$  ft. from the N.W. corner of said Section 20, (said point being the S.W. corner of Mel Stephenson Subdivision) and running thence  $S. 89^{\circ} 38' 58'' E.$  along said subdivision and along Cottonwood Meadows Subdiv. No. 1, for a distance of  $743.00'$  ft. to the S.E. cor. of Lot 10, Cottonwood Meadows No. 1, thence  $S. 0^{\circ} 21' 02'' W.$   $75.04'$  ft. to an old existing fence, thence  $N. 89^{\circ} 24' 53'' W.$   $743.00'$  ft. along said fence, thence  $N. 0^{\circ} 21' 02'' E.$   $72.00'$  ft. to the point of beginning. Contains  $54,625$  Sq. Ft.  $1.254$  Ac.

**NARRATIVE**

The purpose of this survey was to establish boundaries for fencing.  
Basis of bearings:  $S. 0^{\circ} 21' 02'' W.$  along West line of 1/4 sec. State Plane grid.

RECEIVED  
OCT 20 1993  
Weber County Surveyor

**LEGEND**

- o Set  $3/4" \times 24"$  re-bar with plastic cap stamped L. Buttars R.L.S. 2596
- Set P.K. nail with ribbon

**BUTTARS SURVEYING**  
1815 26<sup>TH</sup> STREET OGDEN, UT. 84401  
PHONE 392-5291

CLIENT: G.G. SCHNEIDEWEND

SURVEY LOCATION:  
N.W. 1/4 SEC. 20, T.5N, R.2W, S.1.B.1M.  
WEBER COUNTY

SURVEY DATE: 9-5-93

000907