

DRAWING NUMBER

000908

PLAN HOLD CORPORATION • IRVINE, CALIFORNIA

REORDER BY NUMBER 075AR

POSITION EDGE OF PRINT ON THIS LINE

DRAWING NUMBER

000908

PLAN HOLD CORPORATION • IRVINE, CALIFORNIA

REORDER BY NUMBER 075AR

POSITION EDGE OF PRINT ON THIS LINE

DRAWING NUMBER

000908

PLAN HOLD CORPORATION • IRVINE, CALIFORNIA

REORDER BY NUMBER 075AR

POSITION EDGE OF PRINT ON THIS LINE

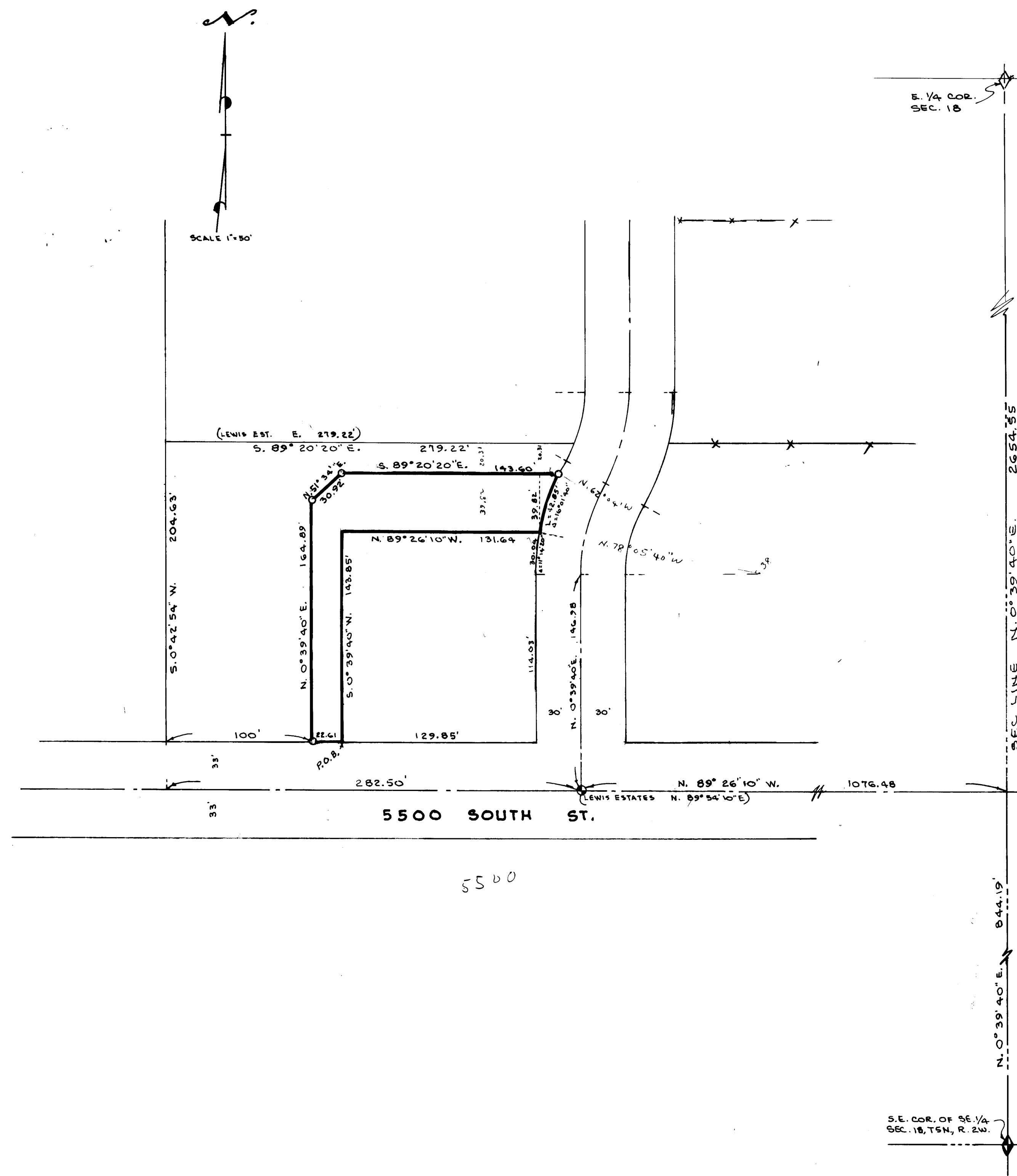
DRAWING NUMBER

000908

PLAN HOLD CORPORATION • IRVINE, CALIFORNIA

REORDER BY NUMBER 075AR

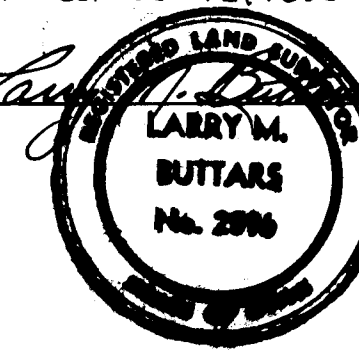
POSITION EDGE OF PRINT ON THIS LINE



**SURVEYORS CERTIFICATE**

I, Larry M. Buttars, a registered Land Surveyor as prescribed by the laws of the State of Utah, and holding licence No. 2596, do hereby certify that I made a survey of the below described property and the Plat hereon is a true and correct representation of said survey.

Date: 9-4-93 Sign: *Larry M. Buttars*



**DESCRIPTION**

Part of the S.E. Quarter of Section 18, T.5N, R.2W, S.L.B. & M., U.S. Survey: Beginning on the North line of 5500 South St. at a point N. 0° 39' 40" E. along the section line 871.19 ft and N. 89° 26' 10" W. 1236.33 ft; from the S.E. corner of said Section 18; and running thence N. 89° 26' 10" W. 22.61 ft. thence N. 0° 39' 40" E. 164.89 ft. thence N. 51° 34' E. 30.92 ft. thence S. 89° 20' 20" E. 143.60 ft., thence along a 153.16 ft. radius curve to the left for an arc distance of 42.85 ft. thence N. 89° 26' 10" W. 131.64 ft. thence S. 0° 39' 40" W. 143.85 ft. to the point of beginning.

**NARRATIVE**

The purpose of this survey was to establish location of the perimeter of property to be conveyed.  
Basis of bearings: E. line of S.E. 1/4 of Section 18, N. 0° 39' 40" E. State plane Grid, from W.C. Surveyor's records.  
Bearing base 0° 39' 40" Clockwise from Lewis Estates Subdivision.

RECEIVED

09-20-1993

Weber Co. 100-100

**LEGEND**

- o Set 3/4" x 24" re-bar with plastic cap stamped L. Buttars R.L.S. 2596
- Set P.K. with ribbon

**BUTTARS SURVEYING**

1815 11th STREET • CANYON CITY, UTAH 84001

CLIENT: STEVE TREASE

SURVEY LOCATION:

S.E. 1/4 SEC. 18, T. 5N, R.2W, S.L.B. & M. WEBER CO., UTAH

SURVEY DATE: 9-4-93

000908