

DRAWING NUMBER

000913

PLAN HOLD CORPORATION • IRVINE, CALIFORNIA

REORDER BY NUMBER 0754P

POSITION EDGE OF PRINT ON THIS LINE

DRAWING NUMBER

000913

PLAN HOLD CORPORATION • IRVINE, CALIFORNIA

REORDER BY NUMBER 0754P

POSITION EDGE OF PRINT ON THIS LINE

DRAWING NUMBER

000913

PLAN HOLD CORPORATION • IRVINE, CALIFORNIA

REORDER BY NUMBER 0754P

POSITION EDGE OF PRINT ON THIS LINE

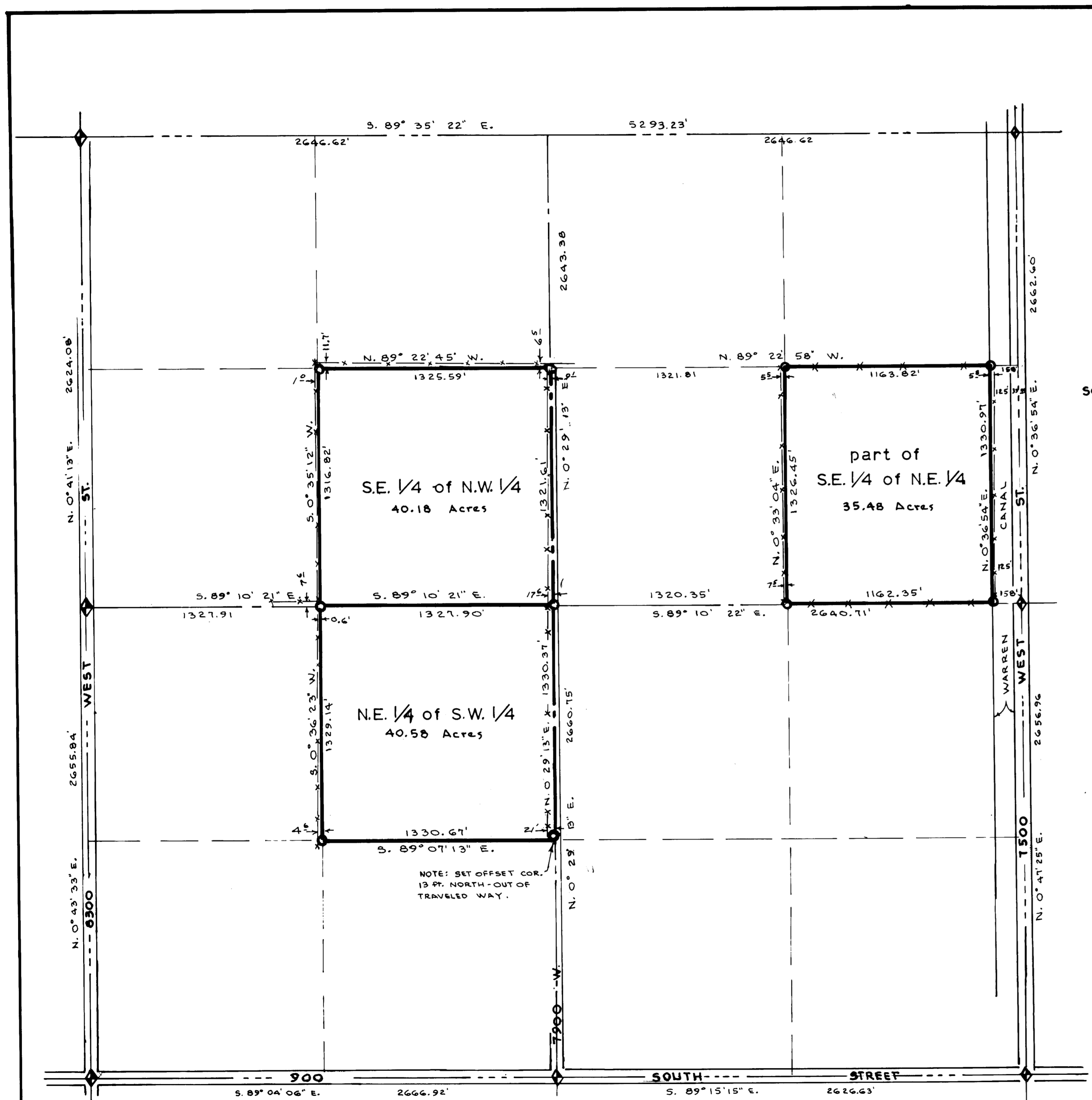
DRAWING NUMBER

000913

PLAN HOLD CORPORATION • IRVINE, CALIFORNIA

REORDER BY NUMBER 0754P

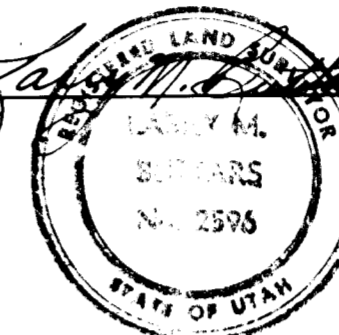
POSITION EDGE OF PRINT ON THIS LINE



**SURVEYORS CERTIFICATE**

I, Larry M. Butters, a registered Land Surveyor as prescribed by the laws of the State of Utah, and holding licence No. 2596 do hereby certify that I made a survey of the below described property and the Plat hereon is a true and correct representation of said survey.

Date: 6-30-93 Sign: *Larry M. Butters*



**DESCRIPTION**

The S.E. 1/4 of the N.W. 1/4 of Section 15  
The N.E. 1/4 of the S.W. 1/4 of Section 15,  
and the S.E. 1/4 of the N.E. 1/4 of Section 15 except the East 158 ft. thereof, all in T.6N., R.3W., S.L.B.&M., U.S. Survey, contains a total of 116.24 Acres

**NARRATIVE**

Section subdivided according to B.L.M. Manual of Surveying Instructions, using existing W.C. Survey Monuments. Bearings on State Plane Coordinate System. The purpose of this survey was to identify and stake corners and determine acreage.

RECEIVED

087209

**LEGEND**

- Set 3/4" x 24" re-bar with plastic cap stamped L. Butters R.L.S. 2596
- Set P.K. nail with ribbon
- ◆ W. Weber County Brass Cap Section monument.

**BUTTERS SURVEYING**

1815 26<sup>th</sup> STREET OGDEN, UT. 84401  
PHONE 392-5291

CLIENT: GENE MEIBOS

SURVEY LOCATION:  
SECTION 15, T.6N., R.3W., S.L.B.&M.  
WEBER COUNTY, UT.

SURVEY DATE: 6-26-93

SECTION 15, T.6 N., R.3 W., S.L.B.& M.

000913