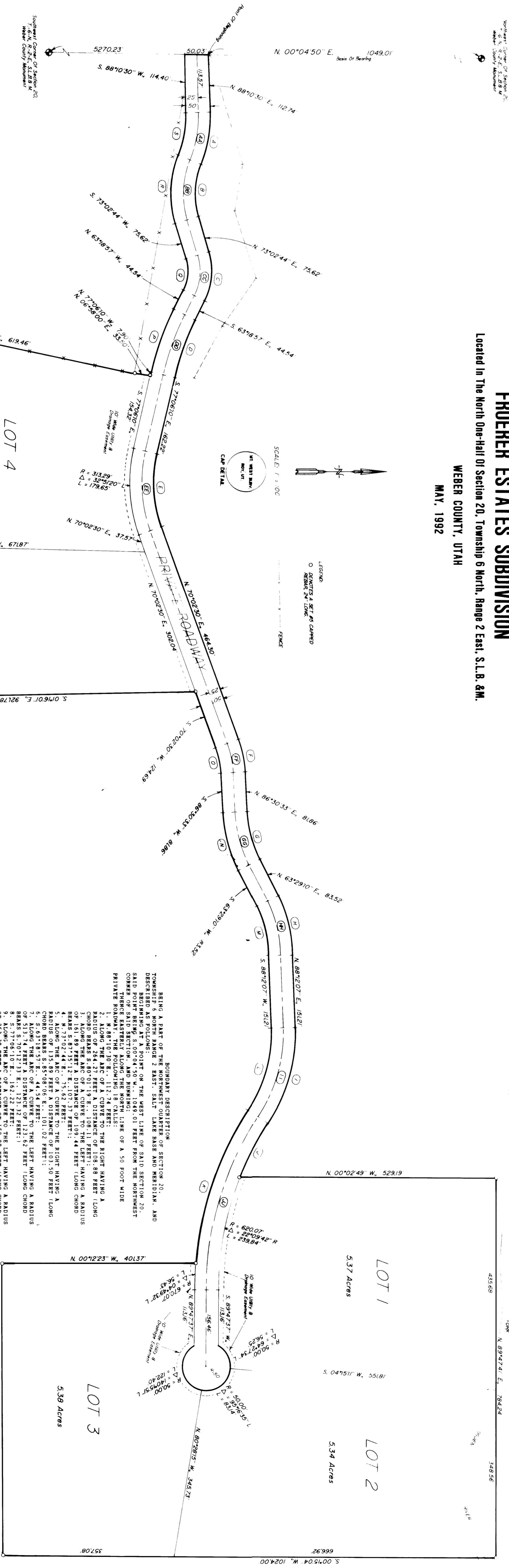


FROERER ESTATES SUBDIVISION
 Located in The North One-Half of Section 20, Township 6 North, Range 2 East, S.L.B. 6M.
 WEBER COUNTY, UTAH
 MAY, 1992



CURVE DATA

1	R: 148.277 L: 148.277 LC: 148.277	11	R: 148.277 L: 148.277 LC: 148.277
2	R: 148.277 L: 148.277 LC: 148.277	12	R: 148.277 L: 148.277 LC: 148.277
3	R: 148.277 L: 148.277 LC: 148.277	13	R: 148.277 L: 148.277 LC: 148.277
4	R: 148.277 L: 148.277 LC: 148.277	14	R: 148.277 L: 148.277 LC: 148.277
5	R: 148.277 L: 148.277 LC: 148.277	15	R: 148.277 L: 148.277 LC: 148.277
6	R: 148.277 L: 148.277 LC: 148.277	16	R: 148.277 L: 148.277 LC: 148.277
7	R: 148.277 L: 148.277 LC: 148.277	17	R: 148.277 L: 148.277 LC: 148.277
8	R: 148.277 L: 148.277 LC: 148.277	18	R: 148.277 L: 148.277 LC: 148.277
9	R: 148.277 L: 148.277 LC: 148.277	19	R: 148.277 L: 148.277 LC: 148.277
10	R: 148.277 L: 148.277 LC: 148.277	20	R: 148.277 L: 148.277 LC: 148.277

4 CURVE DATA

1	R: 148.277 L: 148.277 LC: 148.277
2	R: 148.277 L: 148.277 LC: 148.277
3	R: 148.277 L: 148.277 LC: 148.277
4	R: 148.277 L: 148.277 LC: 148.277

WEBER COUNTY PLANNING COMMISSION APPROVAL
 THIS IS TO CERTIFY THAT THIS PLAN WAS DULY APPROVED BY THE
 WEBER COUNTY PLANNING COMMISSION ON THE _____ DAY OF _____, 1992.

WEBER COUNTY PLANNING COMMISSION

 CHAIRMAN, WEBER COUNTY PLANNING COMMISSION

WEBER COUNTY ENGINEER
 I, _____, ENGINEER, HAVE EXAMINED THE ABOVE REPRODUCED
 FINANCIAL STATEMENT FOR THESE IMPROVEMENTS
 AND HEREBY CERTIFY THAT I APPROVE THE REPRODUCED
 FINANCIAL STATEMENT FOR THESE IMPROVEMENTS
 SIGNED THIS _____ DAY OF _____, 1992.

WEBER COUNTY ATTORNEY
 I HAVE EXAMINED THE SUBDIVISION DOCUMENTS SUBMITTED WITH THIS
 PLAN AND FIND THEM TO BE CONFORMANT WITH THE REQUIREMENTS NOW
 IN FORCE AND EFFECT.
 SIGNED THIS _____ DAY OF _____, 1992.

WEBER COUNTY ATTORNEY

 SIGNATURE

WEBER COUNTY ENGINEER
 I, _____, ENGINEER, HAVE EXAMINED THE ABOVE REPRODUCED
 FINANCIAL STATEMENT FOR THESE IMPROVEMENTS
 AND HEREBY CERTIFY THAT I APPROVE THE REPRODUCED
 FINANCIAL STATEMENT FOR THESE IMPROVEMENTS
 SIGNED THIS _____ DAY OF _____, 1992.

WEBER COUNTY ATTORNEY
 I HAVE EXAMINED THE SUBDIVISION DOCUMENTS SUBMITTED WITH THIS
 PLAN AND FIND THEM TO BE CONFORMANT WITH THE REQUIREMENTS NOW
 IN FORCE AND EFFECT.
 SIGNED THIS _____ DAY OF _____, 1992.

WEBER COUNTY ATTORNEY

 SIGNATURE

WEBER COUNTY ENGINEER
 I, _____, ENGINEER, HAVE EXAMINED THE ABOVE REPRODUCED
 FINANCIAL STATEMENT FOR THESE IMPROVEMENTS
 AND HEREBY CERTIFY THAT I APPROVE THE REPRODUCED
 FINANCIAL STATEMENT FOR THESE IMPROVEMENTS
 SIGNED THIS _____ DAY OF _____, 1992.

WEBER COUNTY ATTORNEY
 I HAVE EXAMINED THE SUBDIVISION DOCUMENTS SUBMITTED WITH THIS
 PLAN AND FIND THEM TO BE CONFORMANT WITH THE REQUIREMENTS NOW
 IN FORCE AND EFFECT.
 SIGNED THIS _____ DAY OF _____, 1992.

WEBER COUNTY ATTORNEY

 SIGNATURE

WEBER COUNTY ENGINEER
 I, _____, ENGINEER, HAVE EXAMINED THE ABOVE REPRODUCED
 FINANCIAL STATEMENT FOR THESE IMPROVEMENTS
 AND HEREBY CERTIFY THAT I APPROVE THE REPRODUCED
 FINANCIAL STATEMENT FOR THESE IMPROVEMENTS
 SIGNED THIS _____ DAY OF _____, 1992.

WEBER COUNTY ATTORNEY
 I HAVE EXAMINED THE SUBDIVISION DOCUMENTS SUBMITTED WITH THIS
 PLAN AND FIND THEM TO BE CONFORMANT WITH THE REQUIREMENTS NOW
 IN FORCE AND EFFECT.
 SIGNED THIS _____ DAY OF _____, 1992.

WEBER COUNTY ATTORNEY

 SIGNATURE

WEBER COUNTY ENGINEER
 I, _____, ENGINEER, HAVE EXAMINED THE ABOVE REPRODUCED
 FINANCIAL STATEMENT FOR THESE IMPROVEMENTS
 AND HEREBY CERTIFY THAT I APPROVE THE REPRODUCED
 FINANCIAL STATEMENT FOR THESE IMPROVEMENTS
 SIGNED THIS _____ DAY OF _____, 1992.

WEBER COUNTY ATTORNEY
 I HAVE EXAMINED THE SUBDIVISION DOCUMENTS SUBMITTED WITH THIS
 PLAN AND FIND THEM TO BE CONFORMANT WITH THE REQUIREMENTS NOW
 IN FORCE AND EFFECT.
 SIGNED THIS _____ DAY OF _____, 1992.

WEBER COUNTY ATTORNEY

 SIGNATURE

WEBER COUNTY ENGINEER
 I, _____, ENGINEER, HAVE EXAMINED THE ABOVE REPRODUCED
 FINANCIAL STATEMENT FOR THESE IMPROVEMENTS
 AND HEREBY CERTIFY THAT I APPROVE THE REPRODUCED
 FINANCIAL STATEMENT FOR THESE IMPROVEMENTS
 SIGNED THIS _____ DAY OF _____, 1992.

WEBER COUNTY ATTORNEY
 I HAVE EXAMINED THE SUBDIVISION DOCUMENTS SUBMITTED WITH THIS
 PLAN AND FIND THEM TO BE CONFORMANT WITH THE REQUIREMENTS NOW
 IN FORCE AND EFFECT.
 SIGNED THIS _____ DAY OF _____, 1992.

WEBER COUNTY ATTORNEY

 SIGNATURE

WEBER COUNTY ENGINEER
 I, _____, ENGINEER, HAVE EXAMINED THE ABOVE REPRODUCED
 FINANCIAL STATEMENT FOR THESE IMPROVEMENTS
 AND HEREBY CERTIFY THAT I APPROVE THE REPRODUCED
 FINANCIAL STATEMENT FOR THESE IMPROVEMENTS
 SIGNED THIS _____ DAY OF _____, 1992.

WEBER COUNTY ATTORNEY
 I HAVE EXAMINED THE SUBDIVISION DOCUMENTS SUBMITTED WITH THIS
 PLAN AND FIND THEM TO BE CONFORMANT WITH THE REQUIREMENTS NOW
 IN FORCE AND EFFECT.
 SIGNED THIS _____ DAY OF _____, 1992.

WEBER COUNTY ATTORNEY

 SIGNATURE