

DRAWING NUMBER

000939

PLAN HOLD CORPORATION • IRVINE, CALIFORNIA
REORDER BY NUMBER 075AR
POSITION EDGE OF PRINT ON THIS LINE

DRAWING NUMBER

000939

PLAN HOLD CORPORATION • IRVINE, CALIFORNIA
REORDER BY NUMBER 075AR
POSITION EDGE OF PRINT ON THIS LINE

DRAWING NUMBER

000939

PLAN HOLD CORPORATION • IRVINE, CALIFORNIA
REORDER BY NUMBER 075AR
POSITION EDGE OF PRINT ON THIS LINE

DRAWING NUMBER

000939

PLAN HOLD CORPORATION • IRVINE, CALIFORNIA
REORDER BY NUMBER 075AR
POSITION EDGE OF PRINT ON THIS LINE

Northwest Corner Of Section 15,
T.-5-N, R.-1-W, S.L.B.&M.

Northeast Corner Of Section 15,
T.-5-N, R.-1-W, S.L.B.&M.

2258.89' S. 89°10'53" E. 5303.13'

S. 01°09'39" W.
627.85'

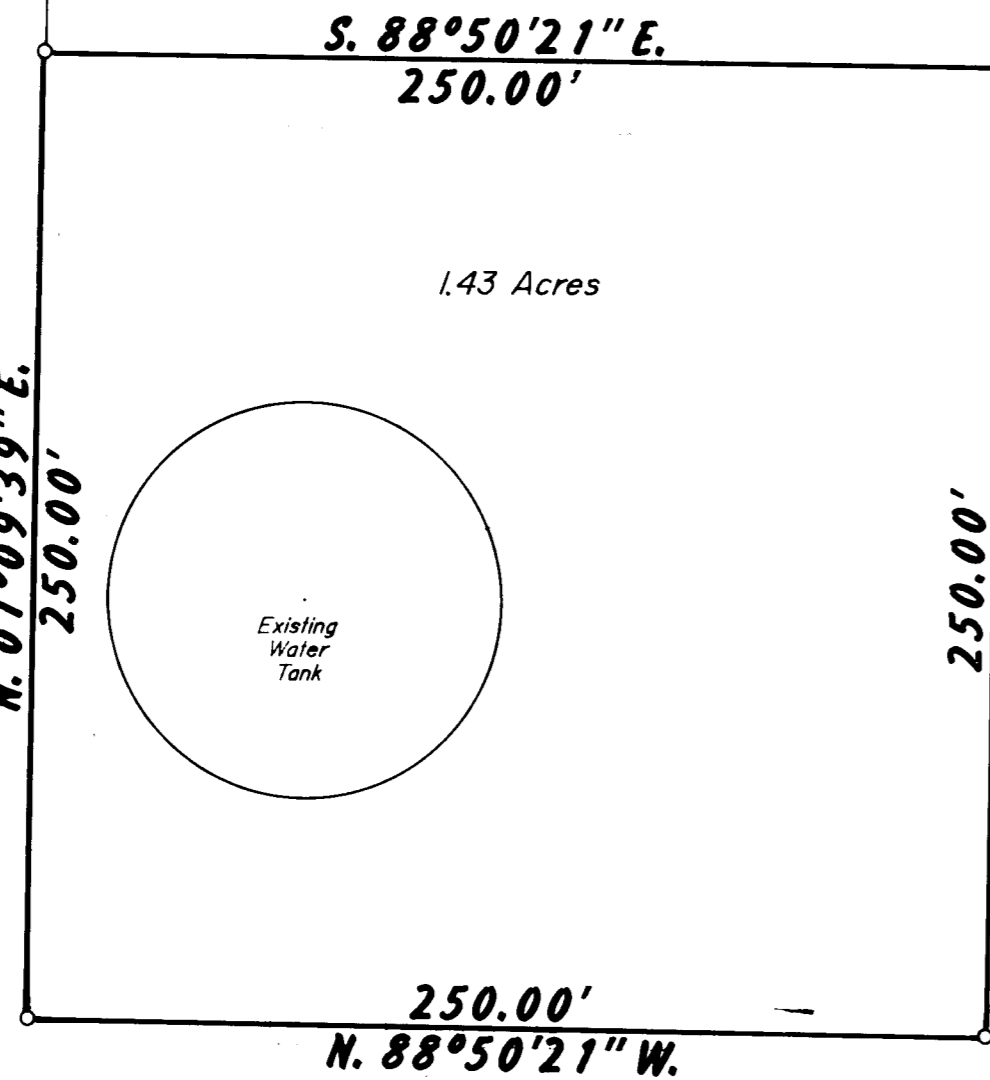


SCALE: 1" = 50'



LEGEND:
○ DENOTES A SET #5 CAPPED REBAR, 24" LONG.

N. 01°09'39" E.
250.00'



PROPERTY DESCRIPTION
BEING A PART OF THE NORTHWEST QUARTER OF SECTION 15, TOWNSHIP 5 NORTH RANGE 1 WEST SALT LAKE BASE AND MERIDIAN AND DESCRIBED AS FOLLOWS:
BEGINNING AT A POINT WHICH IS S. 89°10'53" E. 2258.89 FEET ALONG THE SECTION LINE, AND S. 01°09'39" W. 627.85 FEET FROM THE NORTHWEST CORNER OF SAID SECTION 15 AND RUNNING:
THENCE S. 88°50'21" E., 250.00 FEET;
THENCE S. 01°09'39" W., 250.00 FEET;
THENCE N. 88°50'21" W., 250.00 FEET;
THENCE N. 01°09'39" E., 250.00 FEET TO THE POINT OF BEGINNING AND CONTAINING 1.43 ACRES.

I, MARTIN B. MOORE JR., UTAH REGISTERED LAND SURVEYOR NO. 3964 DO HEREBY CERTIFY THAT THIS PLAT WAS PREPARED FROM A SURVEY MADE ON THE GROUND BY ME AT THE REQUEST OF SOUTH OGDEN CITY AND IN BEHALF OF MOUNTAIN WEST PROFESSIONAL LAND SURVEYORS P.C. AND IS TRUE AND CORRECT TO THE BEST OF MY KNOWLEDGE AND BELIEF.

Martin B. Moore Jr.
MARTIN B. MOORE JR., P.L.S.



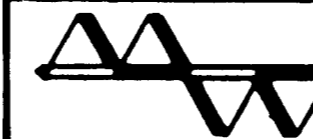
RECEIVED
DEC 8 1993
Weber County Surveyor

NARRATIVE OF SURVEY
THE PURPOSE OF THIS SURVEY WAS TO MARK THE CORNERS OF THE SOUTH OGDEN CITY PROPERTY ON THE GROUND. THE ORIGINAL BEARINGS WERE ROTATED TO STATE PLANE GRID BEARINGS AND THE SECTION CORNER TIE WAS TRANSFERRED TO THE NORTHWEST CORNER OF SECTION, WHICH IS NEARER THE LOCATION OF THE PARCEL.

RECORD OF SURVEY
for
SOUTH OGDEN CITY

Located In The Northwest One-Quarter Of Section 15,
Township 5 North, Range 1 West, S.L.B. &M.

Date 6/15/93 No. 93-1018-A Drwn RLW Ckd MBM



MOUNTAINWEST PROFESSIONAL LAND SURVEYORS, P.C.
1405 W. 4400 S. AG. Bldg. 207
Provo, Utah 84607
Phone (801) 734-3330 Fax (801) 734-5334

000939