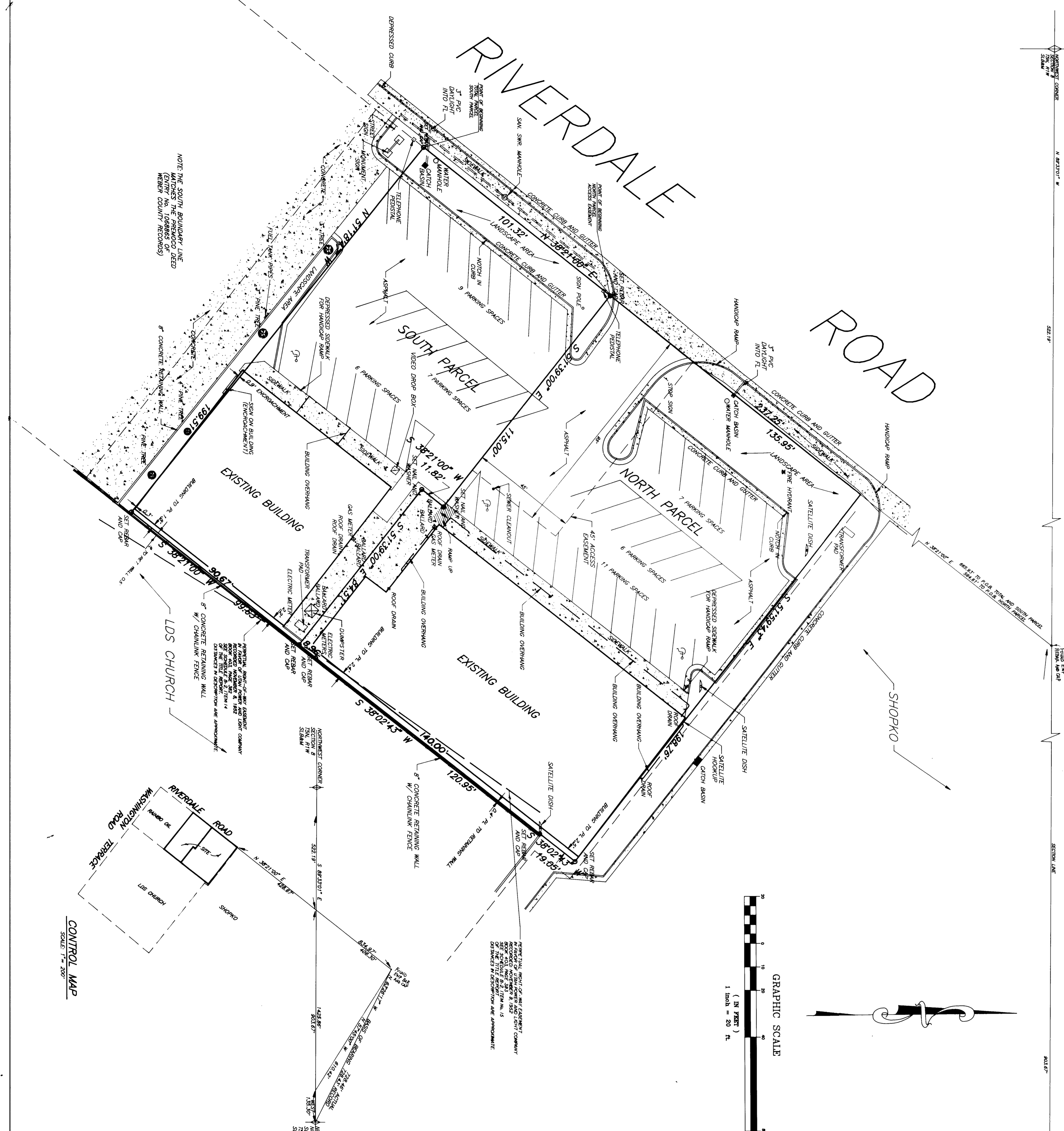
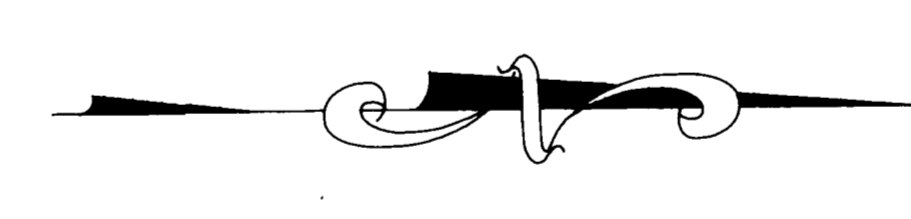
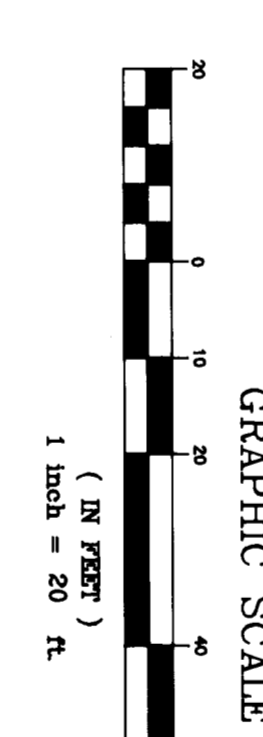
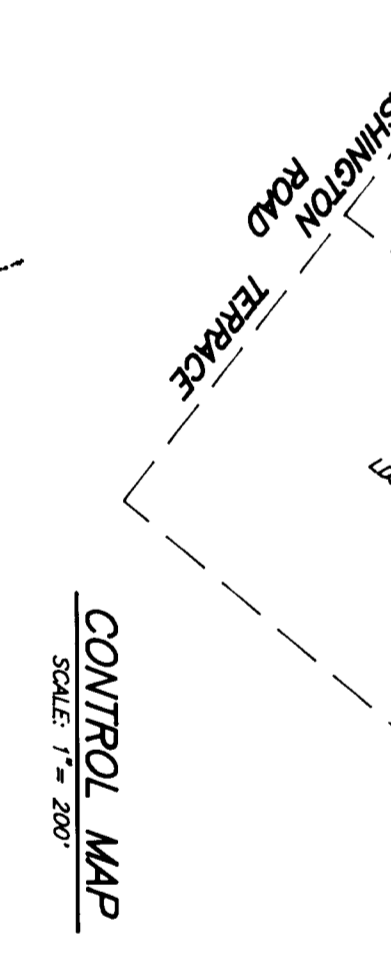


OWNERSHIP OF DOCUMENTS: This document, and the ideas and designs incorporated herein, as an instrument of professional service, is the property of Ensign Engineering and Land Surveying, Inc. and is not to be used, in whole or in part, for any other project without the written authorization of Ensign Engineering and Land Surveying, Inc.

This drawing is the property of Ensign Engineering and Land Surveying, Inc. All rights to the design shown in the drawing including the right to production thereof by patent or otherwise, are reserved by Ensign Engineering and Land Surveying, Inc. The drawing must not be copied or its contents made known or available to third parties without the prior written consent of Ensign Engineering and Land Surveying, Inc. It must be promptly returned to Ensign Engineering and Land Surveying, Inc. on request.



NOTE THE SOUTH BOUNDARY LINE MATCHES THE PREVIOUS DEED (REFER COUNTY RECORDS)



RECEIVED

JUN 27 1994

Wahler-Francis Surveying

28 1992

28 1992

28 1992

TO: RIVERDALE PARTNERS, LTD., a Utah Limited Partnership, whose general partner is STANWICK, INC., a Utah Corporation, LANDMARK TITLE COMPANY AND STANWICK TITLE COMPANY COMPANY.  
THIS IS TO CERTIFY that this map of part and the survey on which it is based were made in accordance with Minimum Standard Dates and adopted by ALTA and NSLS in 1988, and meet the accuracy requirements of a Class A Survey, as defined therein, and include items 1.3.5 and 1.1 of Table 3 thereof.

Table with columns: DESIGN, DRAWN, CHECK, SCALE, DATE, REVISION.

TITLE  
ALTA/ACSM LAND TITLE SURVEY  
BLOCKBUSTER VIDEO BUILDING  
HERITAGE OAK BUILDING  
RIVERDALE ROAD  
OGDEN, UTAH  
FOR  
RIVERDALE PARTNERS, UTAH

ENSIGN ENGINEERING AND LAND SURVEYING  
4455 SOUTH 700 EAST SUITE 202 (801) 263-2455  
MURRAY, UTAH 84107