

DRAWING NUMBER

000983

PLAN HOLD CORPORATION • IRVINE, CALIFORNIA  
REORDER BY NUMBER 075AR  
POSITION EDGE OF PRINT ON THIS LINE

DRAWING NUMBER

000983

PLAN HOLD CORPORATION • IRVINE, CALIFORNIA  
REORDER BY NUMBER 075AR  
POSITION EDGE OF PRINT ON THIS LINE

DRAWING NUMBER

000983

PLAN HOLD CORPORATION • IRVINE, CALIFORNIA  
REORDER BY NUMBER 075AR  
POSITION EDGE OF PRINT ON THIS LINE

DRAWING NUMBER

000983

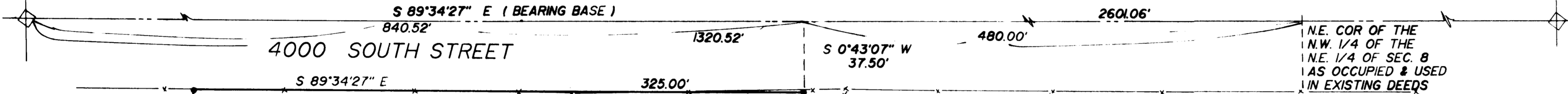
PLAN HOLD CORPORATION • IRVINE, CALIFORNIA  
REORDER BY NUMBER 075AR  
POSITION EDGE OF PRINT ON THIS LINE



SCALE 1" = 40'

NORTH 1/4 COR. OF SEC.  
8, T5N, R2W, SLB&M  
( FOUND MONUMENT )

N.E. COR. OF SEC. 8  
T5N, R2W, SLB&M  
( FOUND MONUMENT )



CONT. 3.000 AC

NOTE

- SET REBAR & CAP

MYRNA HANSEN

A PART OF THE NORTHEAST QUARTER OF SECTION 8, T5N, R2W, SLB&M, U.S. SURVEY, BEGINNING AT A POINT ON THE SOUTH LINE OF 4000 SO. STREET WHICH IS SOUTH 89°34'27" EAST 840.52 FT. ALONG THE SECTION LINE, AND SOUTH 0°43'07" WEST 37.50 FT. FROM THE NORTH QUARTER CORNER OF SAID SECTION 8, SAID POINT IS ALSO NORTH 89°34'27" WEST 400.00 FT. ALONG THE QUARTER SECTION LINE AND SOUTH SOUTH 0°43'07" WEST 37.50 FT. FROM THE NORTHEAST CORNER OF THE NORTHWEST QUARTER OF THE NORTHEAST QUARTER OF SAID SECTION 8 AS OCCUPIED ON THE GROUND AND RUNNING THENCE SOUTH 0°43'07" WEST 372.67 FT. TO THE NORTH LINE OF THE HOWARD SLEW, THENCE SOUTH 42°10'26" WEST 36.64 FT. ALONG SAID WEST LINE, THENCE NORTH 89°34'27" WEST, THENCE NORTH 1°26'33" EAST 400.06 FT. TO THE SOUTH LINE OF 4000 SOUTH STREET, THENCE SOUTH 89°34'27" EAST 325.00 FT. TO THE POINT OF BEGINNING.

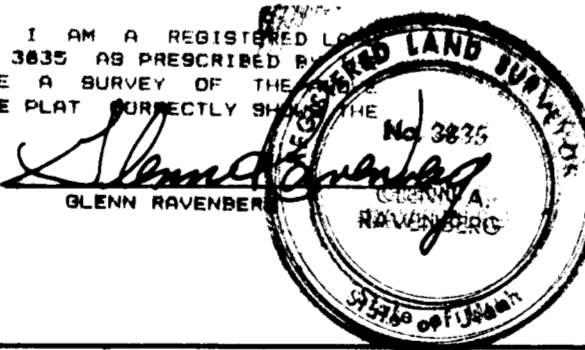
CONTAINS 3.000 ACRES

NARRATIVE

THIS SURVEY WAS DONE TO PROVIDE THE LEGAL DESCRIPTION FOR A 3.000 ACRE CHURCH SITE. THE TWO SECTION CORNERS SHOWN WERE LOCATED AND USED FOR SURVEY CONTROL AND BASIS OF BEARINGS. THE EAST LINE OF THE WEST HALF OF THE NORTHEAST QUARTER OF SECTION 8 IS AN OLD ESTABLISHED FENCE LINE. IT HAS BEEN SURVEYED AND LOCATED 1320.52 FT. EAST OF THE NORTH QUARTER CORNER LEAVING ALL OF THE SHORTAGE IN THIS SECTION IN THE EAST HALF.

I, GLENN RAVENBERG, DO HEREBY CERTIFY THAT I AM A REGISTERED LAND SURVEYOR, AND THAT I HOLD CERTIFICATE NO. 3635 AS PRESCRIBED BY THE LAWS OF THE STATE OF UTAH, AND THAT I MADE A SURVEY OF THE PROPERTY, I FURTHER CERTIFY THAT THE ABOVE PLAT CORRECTLY SHOWS THE TRUE DIMENSIONS OF THE PROPERTY SURVEYED.

DEC 22, 1993



N 89°34'27" W

305.80'

HOWARD SLEW

S 42°10'26" W  
36.64'

S 0°43'07" W

23.7'

4.1'

372.67'

22.5'

1320.52'

S 0°43'07" W  
37.50'

480.00'

2601.06'

S 0°43'07" W 1/4, 1/4 FENCE ( OLD STRONG FENCE )

N.E. COR. OF THE  
N.W. 1/4 OF THE  
N.E. 1/4 OF SEC. 8  
AS OCCUPIED & USED  
IN EXISTING DEEDS

RECEIVED

MAR 21 1994

Wasatch County Surveyor

REVISED 2-1-94

**INTERMOUNTAIN SURVEYING**  
Layton, Utah 84041 (801) 544-1170

PROPERTY SURVEY  
FOR  
MYRNA HANSEN- LDS REAL ESTATE  
PART OF THE NE. 1/4 OF SEC 8, T5N, R2W, SLB&M

DEC 21 1993 1" = 40' PS-93-120

000983