

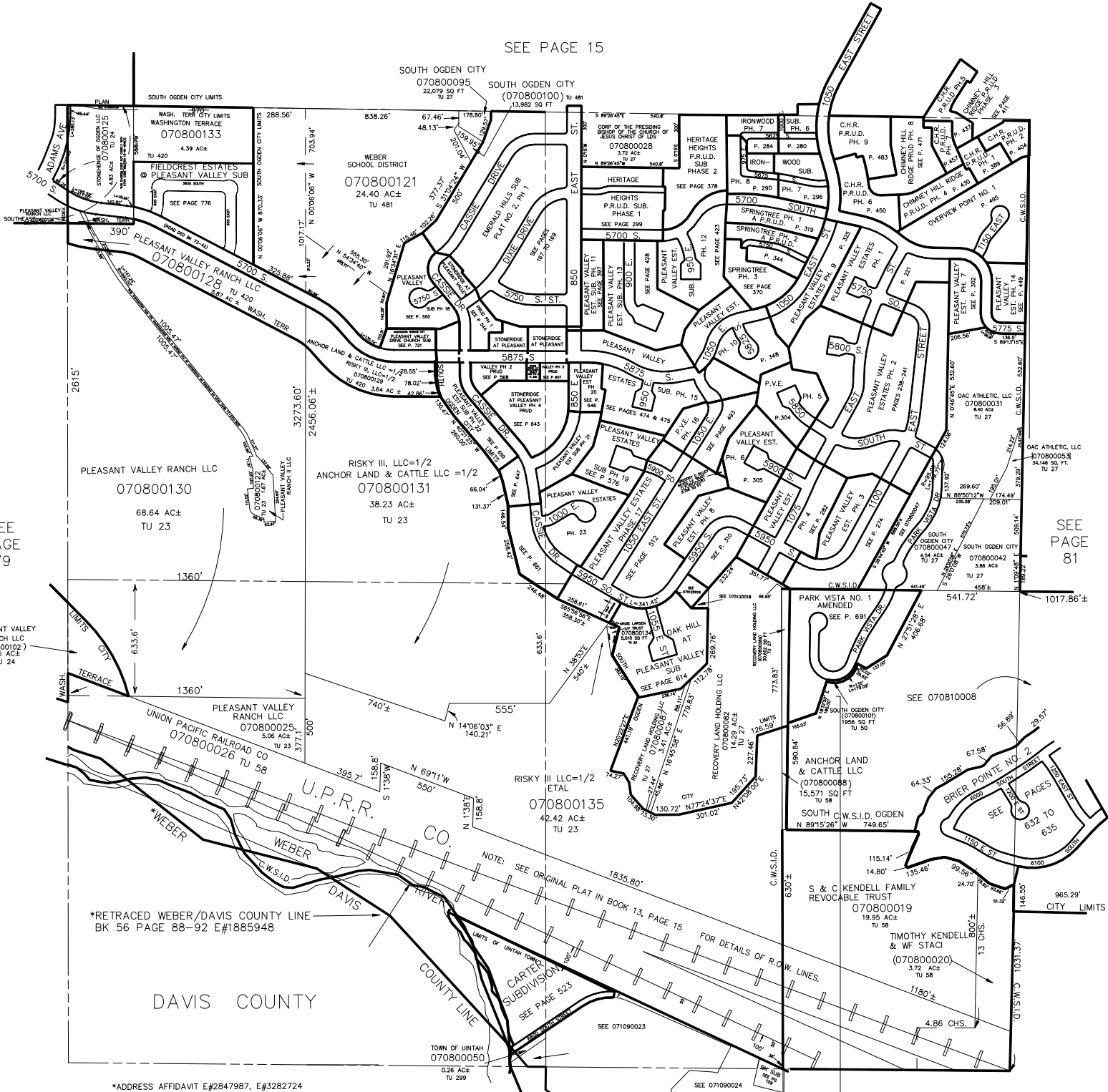
SECTION 21, T.5N., R.1W., S.L.B. & M.

IN WEBER COUNTY, SOUTH OGDEN CITY, & CITY OF WASHINGTON TERRACE

TAXING UNIT: 23, 24, 27, 50, 58, 299, 420, 481

SCALE 1" = 400'

SEE PAGE 15



SEE PAGE 79

SEE PAGE 81

SEE PAGE 109

FOR TAX PURPOSES ONLY