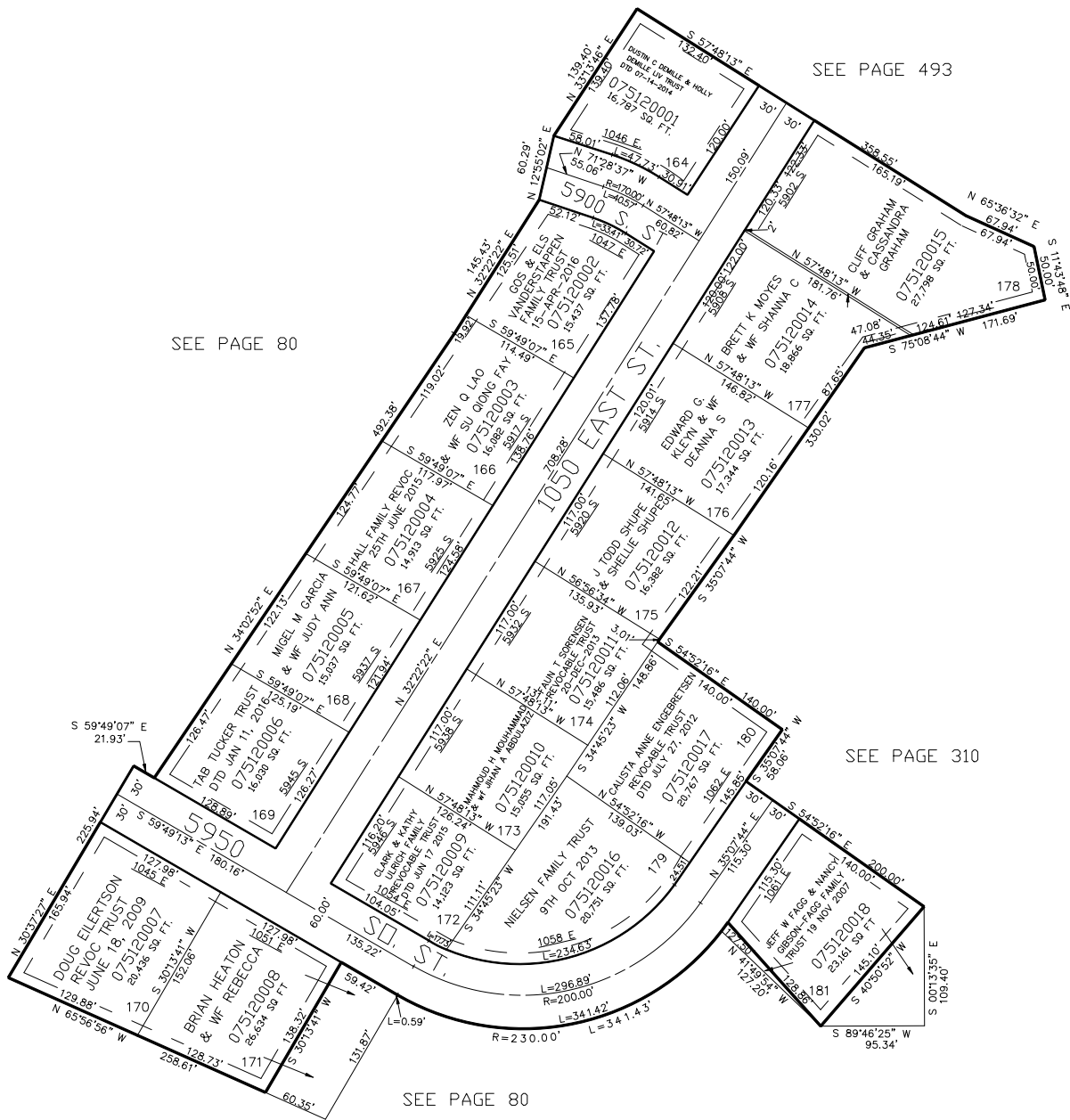


PART OF THE EAST 1/2, OF SEC. 21, T.5N., R.1W., S.L.B. & M.
PLEASANT VALLEY ESTATES SUBDIVISION
PHASE 17

TAXING UNIT: 27

IN SOUTH OGDEN CITY

SCALE 1" = 80'



10' UTILITY & DRAINAGE EASEMENTS EACH SIDE OF PROPERTY LINES AS INDICATED BY DASHED LINES EXCEPT AS OTHERWISE SHOWN.

FOR COMPLETE ENG DATA SEE ORIGINAL DEDICATION PLAT IN BOOK 45, PAGE 61 OF RECORDS.